

Double-level terminal with electronic components, Screw connection, Mounting type: Mounting rail TS 35/7.5 and TS 32, Rated cross-section: 4 mm², Width: 12 mm, Colour: Beige

Business data

| | |
|--|---|
| Article number | <u>1048.2</u> |
| Article name | RKD 4/UG/600V/5kA BG |
| GTIN (EAN) | 4044211010102 |
| Packaging unit | 50 |
| Quantity unit | PC |
| Weight per piece (not including packaging) | 20 g |
| Weight per piece (including packaging) | 21.8 g |
| Unit of weight | G |
| Customs number | 85369010 |
| Country of origin | CZ |
| Product description | Double-level terminals with electronic components |
| Colour | Beige |

Technical data

Dimensions

| | |
|------------------|---------|
| Length | 60.2 mm |
| Width | 12 mm |
| Height TS 35/7.5 | 61 mm |
| Height TS 32 | 65.5 mm |

Ratings

| | |
|-----------------------|-------------------|
| Rated voltage | 600 V |
| Rated current | 10 A |
| Rated cross-section | 4 mm ² |
| Rated impulse voltage | 6 kV |
| Overvoltage category | III |
| Contamination degree | 3 |

Connection data

| | |
|--|---------------------|
| Connection principle | Screw connection |
| Connection position | Lateral |
| Number of terminals per level | 2 |
| Number of levels | 2 |
| Wire cross-section single-core (rigid) / stranded, min. | 0.2 mm ² |
| Wire cross-section single core (rigid)/stranded, max. | 4 mm ² |
| Wire cross-section stranded, min. | 0.2 mm ² |
| Wire cross-section stranded, max. | 4 mm ² |
| Wire cross-section stranded with wire-end ferrules, min. | 0.2 mm ² |
| Wire cross-section stranded with wire-end ferrules, max. | 4 mm ² |
| Wire cross-section AWG, min. | 22 |
| Wire cross-section AWG, max. | 12 |
| Stripping length | 9 mm |
| Screw head | Slotted |
| Screw threading | M 3 |
| Tightening torque, min. | 0.5 Nm |
| Tightening torque, max. | 1 Nm |

Technical data

Materials

| | |
|---------------------------|---------------|
| Insulation housing | Polyamide 6.6 |
| Flammability class UL 94 | V-2 |
| Working temperature, min. | -40 °C |
| Working temperature, max. | 105 °C |

Further technical data

| | |
|--------------------------------|-----------------------------------|
| Mounting type | Mounting rail TS 35/7.5 and TS 32 |
| Gauge plug acc. to EN 60 947-1 | A4 |
| End plate required | ✓ |
| Gas discharge tube | ✓ |

Environmental Product Compliance

| | |
|--------------------------------|------------|
| REACH Conform | yes |
| REACH Reference date | 2024-01-23 |
| REACH Candidate Substance Note | No |
| RoHS Conform | yes |

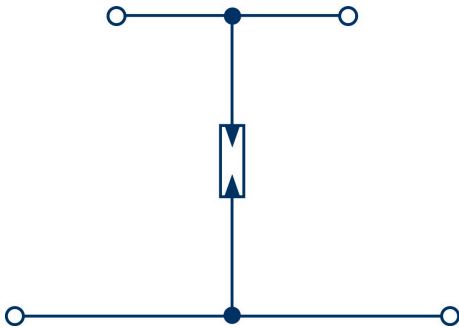
Approvals

Standards and regulations

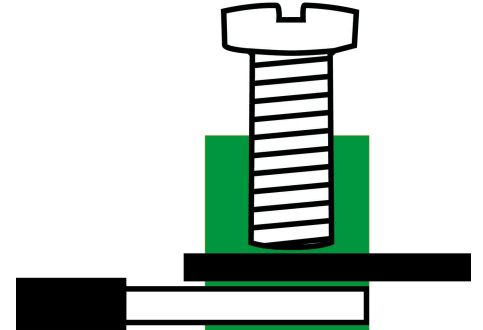
| | |
|--------------|----------------|
| EAC approval | TR ZU 004/2011 |
|--------------|----------------|

| | |
|----------------------|-----|
| EAC approval granted | yes |
|----------------------|-----|

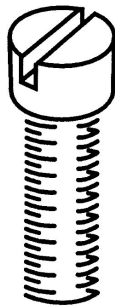
Media



EAC



M3



Accessories

End plate



End plate, Width: 1.5 mm, Colour: Beige

| Article number | Article name | GTIN (EAN) | Packaging unit |
|----------------|--------------|---------------|----------------|
| <u>2101.2</u> | AP 4 BG | 4044211151652 | 20 |

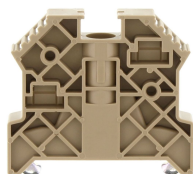
Insulation plate



Insulation plate, Colour: Beige

| Article number | Article name | GTIN (EAN) | Packaging unit |
|----------------|--------------|---------------|----------------|
| <u>2566.2</u> | TRS 3 BG | 4044211053567 | 100 ST |

End stop



End stop, Mounting type: Mounting rail TS 35/7.5, Width: 9.5 mm, Colour: Beige

| Article number | Article name | GTIN (EAN) | Packaging unit |
|----------------|---------------|---------------|----------------|
| <u>2828.0</u> | ES 35/K/ST BG | 4044211055547 | 50 |

Quick marking



Terminal marker / Pocket Maxicard, Length: 5 mm, Width: 6 mm, Colour: White

| Article number | Article name | GTIN (EAN) | Packaging unit |
|----------------|----------------|---------------|----------------|
| <u>4702.7</u> | PMC SB 6/50 WH | 4044211089986 | 500 ST |

Screwdriver

1048.2 RKD 4/UG/600V/5kA BG

Screwdriver with bare blade, Colour: Black-grey



| Article number | Article name | GTIN (EAN) | Packaging unit |
|----------------|--------------|---------------|----------------|
| <u>1086.0</u> | SDB 0,6x3,5 | 4044211014797 | 1 ST |

Socket plug

Socket plug, M 2.5, Colour: natural



| Article number | Article name | GTIN (EAN) | Packaging unit |
|----------------|--------------|---------------|----------------|
| <u>2075.0</u> | STB 8,5/2,3 | 4044211048839 | 50 ST |

Test plug

Test plug, Colour: Red



| Article number | Article name | GTIN (EAN) | Packaging unit |
|----------------|--------------|---------------|----------------|
| <u>2007.0</u> | PS 2,3 | 4044211048105 | 20 ST |