

Feed-through terminal, Screw connection, Mounting type: Mounting rail TS 35/7.5 and TS 32, Rated cross-section: 16 mm², Width: 12 mm, Colour: White

RAL: 9010

Business data

| | |
|--|-----------------------|
| Article number | <u>1050.7</u> |
| Article name | RK 16 WH |
| GTIN (EAN) | 4044211080297 |
| Packaging unit | 50 |
| Quantity unit | PC |
| Weight per piece (not including packaging) | 28 g |
| Weight per piece (including packaging) | 29.7 g |
| Unit of weight | G |
| Customs number | 85369010 |
| Country of origin | CZ |
| Prio-Article | 1050.2 |
| Product description | Feed-through terminal |

Data sheet

1050.7 RK 16 WH

Technical data

Dimensions

| | |
|------------------|---------|
| Length | 50 mm |
| Width | 12 mm |
| Height TS 35/7.5 | 58.5 mm |
| Height TS 32 | 63 mm |

Ratings

| | |
|---|--------------------|
| Rated voltage | 800 V |
| Rated current | 76 A |
| Rated cross-section | 16 mm ² |
| Rated impulse voltage | 8 kV |
| Overvoltage category | III |
| Contamination degree | 3 |
| Maximum power dissipation for nominal condition | 2.43 W |

Technical data

Connection data

| | |
|--|---------------------|
| Connection principle | Screw connection |
| Connection position | Lateral |
| Connections | 2 |
| Number of terminals per level | 2 |
| Number of levels | 1 |
| Wire cross-section single-core (rigid) / stranded, min. | 2.5 mm ² |
| Wire cross-section single core (rigid)/stranded, max. | 25 mm ² |
| Wire cross-section stranded, min. | 2.5 mm ² |
| Wire cross-section stranded, max. | 16 mm ² |
| Wire cross-section stranded with wire-end ferrules,min. | 2.5 mm ² |
| Wire cross-section stranded with wire-end ferrules,max. | 16 mm ² |
| Wire cross-section AWG, min. | 10 |
| Wire cross-section AWG, max. | 6 |
| Stripping length | 15 mm |
| Screw head | Slotted |
| Screw threading | M 5 |
| Tightening torque, min. | 2 Nm |
| Tightening torque, max. | 4 Nm |
| Wire cross-section single-core (rigid) / stranded, AWGmax. | 6 |
| Wire cross-section single-core (rigid) / stranded, AWGmin. | 10 |
| Wire cross-section stranded, AWG max. | 6 |
| Wire cross-section stranded, AWG min. | 10 |
| Wire cross-section stranded with wire-end ferrules, AWG min. | 10 |

Materials

| | |
|---------------------------|---------------|
| Insulation housing | Polyamide 6.6 |
| Flammability class UL 94 | V-2 |
| Working temperature, min. | -40 °C |
| Working temperature, max. | 105 °C |

Further technical data

| | |
|-------------------------------------|-----------------------------------|
| Mounting type | Mounting rail TS 35/7.5 and TS 32 |
| Gauge plug acc. to EN 60 947-1 | B7 |
| Number of cross-connection channels | 1 |
| End plate required | ✓ |

Data sheet

1050.7 RK 16 WH



Technical data

Environmental Product Compliance

REACH Candidate Substance Note

No

Approvals

Standards and regulations

| | |
|--------------|----------------|
| EAC approval | TR ZU 004/2011 |
|--------------|----------------|

| | |
|----------------------|-----|
| EAC approval granted | yes |
|----------------------|-----|

CSA approval

| | |
|--------------|--------------|
| CSA approval | C22.2 No 158 |
|--------------|--------------|

| | |
|----------------------|-----|
| CSA approval granted | yes |
|----------------------|-----|

| | |
|-------------------------------|-------|
| CSA Usegroup C: rated voltage | 600 V |
|-------------------------------|-------|

| | |
|-------------------------------|------|
| CSA Usegroup C: rated current | 70 A |
|-------------------------------|------|

| | |
|----------------------------------|----|
| CSA wire cross-section AWG, min. | 10 |
|----------------------------------|----|

| | |
|----------------------------------|---|
| CSA wire cross-section AWG, max. | 6 |
|----------------------------------|---|

| | |
|----------------------|-------|
| CSA stripping length | 15 mm |
|----------------------|-------|

| | |
|------------------|------|
| CSA torque, max. | 4 Nm |
|------------------|------|

| | |
|------------------|------|
| CSA torque, min. | 2 Nm |
|------------------|------|

| | |
|-----------------|--------------|
| CSA File Number | 042110_0_000 |
|-----------------|--------------|

KEMA KEUR approval

| | |
|--------------------|-------------------|
| KEMA KEUR approval | EN 60947-7-1:2009 |
|--------------------|-------------------|

| | |
|----------------------------|-----|
| KEMA KEUR approval granted | yes |
|----------------------------|-----|

| | |
|--------------------|-------|
| KEMA rated voltage | 800 V |
|--------------------|-------|

| | |
|--------------------|------|
| KEMA rated current | 76 A |
|--------------------|------|

| | |
|----------------------------|------|
| KEMA rated impulse voltage | 8 kV |
|----------------------------|------|

| | |
|---|---------------------|
| KEMA wire cross-section single core (rigid), min. | 2.5 mm ² |
|---|---------------------|

| | |
|---|--------------------|
| KEMA wire cross-section single-core (rigid), max. | 25 mm ² |
|---|--------------------|

| | |
|--|---------------------|
| KEMA wire cross-section stranded, min. | 2.5 mm ² |
|--|---------------------|

| | |
|--|--------------------|
| KEMA wire cross-section stranded, max. | 16 mm ² |
|--|--------------------|

Approvals

UL Recognized

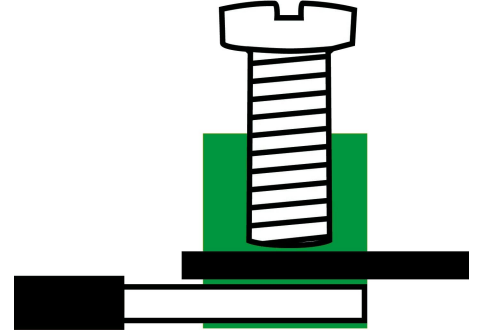
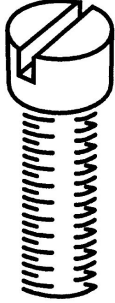
| | |
|---|------------|
| UL approval | UL 1059 |
| UL Usegroup C: rated voltage | 600 V |
| UL Usegroup C: rated current | 65 A |
| UL wire cross-section single-core (rigid) AWG, min. | 10 |
| UL wire cross-section single-core (rigid) AWG, max. | 6 |
| UL wire cross-section stranded AWG, min. | 10 |
| UL wire cross-section stranded AWG, max. | 6 |
| UL torque | 10.5 Lb In |
| UL wire material | Cu |
| UL factory wiring | 1 |
| UL field wiring | 1 |
| UL File Number | E95701 |
| UL Recognized | 1 |

German Lloyd approval

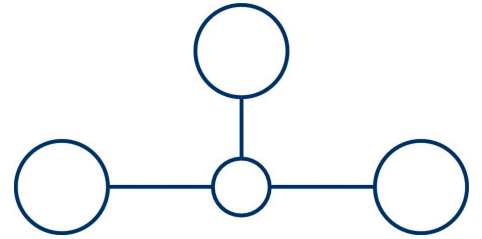
| | |
|----------------------------|---|
| DNV GL Certificate number | TAE000014T |
| DNV GL Location Classes | Temperature: B, Humidity: B, Vibration: A |
| DNV GL approval granted | 1 |
| DNV GL rated cross-section | 16 mm ² |
| DNV GL rated current | 82 A |
| DNV GL rated voltage | 750 V |
| DNV GL test standard | IEC 60947-7-1:2002 |

Media

M5



EAC



Accessories

Cover



Cover, Length: 30 mm, Width: 10.7 mm, Colour: Yellow

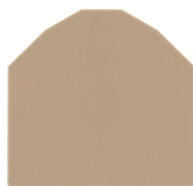
| Article number | Article name | GTIN (EAN) | Packaging unit |
|----------------|--------------|---------------|----------------|
| <u>2819.0</u> | AD 1/12/B YE | 4044211055455 | 20 ST |



Cover, Length: 26.5 mm, Width: 12 mm, Colour: White

| Article number | Article name | GTIN (EAN) | Packaging unit |
|----------------|--------------|---------------|----------------|
| <u>2969.0</u> | AD 1/12 WH | 4044211056988 | 20 ST |

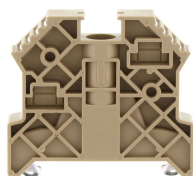
End plate



End plate, Width: 1.5 mm, Colour: Beige

| Article number | Article name | GTIN (EAN) | Packaging unit |
|----------------|--------------|---------------|----------------|
| <u>2104.2</u> | AP 16 BG | 4044211049164 | 20 |

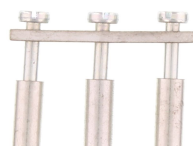
End stop



End stop, Mounting type: Mounting rail TS 35/7.5, Width: 9.5 mm, Colour: Beige

| Article number | Article name | GTIN (EAN) | Packaging unit |
|----------------|---------------|---------------|----------------|
| <u>2828.0</u> | ES 35/K/ST BG | 4044211055547 | 50 |

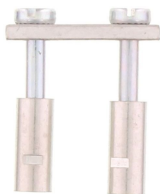
Cross-connector



Cross-connector, No. of poles: 3, Mounting type: Can be screwed on, Width: 32 mm, Rated cross-section: 16 mm², Colour: natural

| Article number | Article name | GTIN (EAN) | Packaging unit |
|----------------|--------------|---------------|----------------|
| <u>2113.0</u> | Q 3 | 4044211049270 | 20 ST |

Cross-connector



Cross-connector, No. of poles: 2, Mounting type: Can be screwed on, Width: 20.1 mm, Rated cross-section: 16 mm², Colour: natural

| Article number | Article name | GTIN (EAN) | Packaging unit |
|----------------|--------------|---------------|----------------|
| <u>2112.0</u> | Q 2 | 4044211049263 | 20 ST |



Cross-connector, No. of poles: 10, Mounting type: Can be screwed on, Width: 115.3 mm, Rated cross-section: 16 mm², Colour: natural

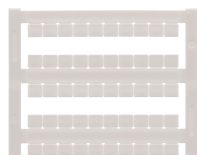
| Article number | Article name | GTIN (EAN) | Packaging unit |
|----------------|--------------|---------------|----------------|
| <u>2115.0</u> | Q 10 | 4044211049294 | 10 ST |



Cross-connector, No. of poles: 4, Mounting type: Can be screwed on, Width: 43.9 mm, Rated cross-section: 16 mm², Colour: natural

| Article number | Article name | GTIN (EAN) | Packaging unit |
|----------------|--------------|---------------|----------------|
| <u>2114.0</u> | Q 4 | 4044211049287 | 10 ST |

Quick marking



Terminal marker / Pocket Maxicard, Length: 5 mm, Width: 6 mm, Colour: White

| Article number | Article name | GTIN (EAN) | Packaging unit |
|----------------|----------------|---------------|----------------|
| <u>4702.7</u> | PMC SB 6/50 WH | 4044211089986 | 500 ST |

Screwdriver



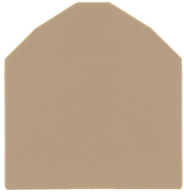
Screwdriver with bare blade, Colour: Black-grey

| Article number | Article name | GTIN (EAN) | Packaging unit |
|----------------|--------------|---------------|----------------|
| <u>1087.0</u> | SDB 0,8x4,0 | 4044211014803 | 1 ST |

Partition plate

Data sheet

1050.7 RK 16 WH



Partition plate, Width: 1.5 mm, Colour: Beige

| Article number | Article name | GTIN (EAN) | Packaging unit |
|----------------|--------------|---------------|----------------|
| <u>2105.2</u> | TW 16 BG | 4044211049195 | 20 |