

Feed-through terminal, Screw connection, Mounting type: Mounting rail TS 35/7.5 and TS 32, Rated cross-section: 35 mm<sup>2</sup>, Width: 16 mm, Colour: Green

### Business data

|  |                       |
|--|-----------------------|
| Article number                             | <u>1052.1</u>         |
| Article name                               | RK 35 GN              |
| GTIN (EAN)                                 | 4044211010973         |
| Packaging unit                             | 20                    |
| Quantity unit                              | PC                    |
| Weight per piece (not including packaging) | 57.4 g                |
| Weight per piece (including packaging)     | 60.25 g               |
| Unit of weight                             | G                     |
| Customs number                             | 85369010              |
| Country of origin                          | CZ                    |
| Prio-Article                               | 1052.2                |
| Product description                        | Feed-through terminal |

# Data sheet

## 1052.1 RK 35 GN

---

### Technical data

---

#### Dimensions

|                  |         |
|------------------|---------|
| Length           | 58 mm   |
| Width            | 16 mm   |
| Height TS 35/7.5 | 71.5 mm |
| Height TS 32     | 76 mm   |

#### Ratings

|   |                    |
|---|--------------------|
| Rated voltage                                   | 800 V              |
| Rated current                                   | 125 A              |
| Rated cross-section                             | 35 mm <sup>2</sup> |
| Rated impulse voltage                           | 8 kV               |
| Overvoltage category                            | III                |
| Contamination degree                            | 3                  |
| Maximum power dissipation for nominal condition | 4 W                |

### Technical data

#### Connection data

|  |                     |
|--|---------------------|
| Connection principle   | Screw connection    |
| Connection position  | Lateral             |
| Connections  | 2                   |
| Number of terminals per level                                | 2                   |
| Number of levels   | 1                   |
| Wire cross-section single-core (rigid) / stranded, min.      | 2.5 mm <sup>2</sup> |
| Wire cross-section single core (rigid)/stranded, max.        | 50 mm <sup>2</sup>  |
| Wire cross-section stranded, min.                            | 2.5 mm <sup>2</sup> |
| Wire cross-section stranded, max.                            | 35 mm <sup>2</sup>  |
| Wire cross-section stranded with wire-end ferrules,min.      | 2.5 mm <sup>2</sup> |
| Wire cross-section stranded with wire-end ferrules,max.      | 35 mm <sup>2</sup>  |
| Wire cross-section AWG, min.                                 | 12                  |
| Wire cross-section AWG, max.                                 | 2                   |
| Stripping length   | 20 mm               |
| Screw head   | Slotted             |
| Screw threading  | M 6                 |
| Tightening torque, min.                                      | 2.5 Nm              |
| Tightening torque, max.                                      | 5 Nm                |
| Wire cross-section single-core (rigid) / stranded, AWGmax.   | 2                   |
| Wire cross-section single-core (rigid) / stranded, AWGmin.   | 12                  |
| Wire cross-section stranded, AWG max.                        | 2                   |
| Wire cross-section stranded, AWG min.                        | 12                  |
| Wire cross-section stranded with wire-end ferrules, AWG min. | 12                  |

#### Materials

|                           |               |
|---------------------------|---------------|
| Insulation housing        | Polyamide 6.6 |
| Flammability class UL 94  | V-2           |
| Working temperature, min. | -40 °C        |
| Working temperature, max. | 105 °C        |

#### Further technical data

|                                     |                                   |
|-------------------------------------|-----------------------------------|
| Mounting type                       | Mounting rail TS 35/7.5 and TS 32 |
| Gauge plug acc. to EN 60 947-1      | B9                                |
| Number of cross-connection channels | 1                                 |
| End plate required                  | ✓                                 |

# Data sheet

## 1052.1 RK 35 GN

---

### Technical data

---

#### Environmental Product Compliance

---

|                                |                                    |
|--------------------------------|------------------------------------|
| REACH Conform                  | Yes, yes                           |
| REACH Reference date           | 2023-06-14, 2024-06-27, 2024-06-27 |
| REACH Candidate Substance Note | No                                 |
| RoHS Conform                   | Yes, yes                           |

---

### Approvals

#### Standards and regulations

|              |                |
|--------------|----------------|
| EAC approval | TR ZU 004/2011 |
|--------------|----------------|

|                      |     |
|----------------------|-----|
| EAC approval granted | yes |
|----------------------|-----|

#### CSA approval

|              |              |
|--------------|--------------|
| CSA approval | C22.2 No 158 |
|--------------|--------------|

|                      |     |
|----------------------|-----|
| CSA approval granted | yes |
|----------------------|-----|

|                               |       |
|-------------------------------|-------|
| CSA Usegroup C: rated voltage | 600 V |
|-------------------------------|-------|

|                               |       |
|-------------------------------|-------|
| CSA Usegroup C: rated current | 100 A |
|-------------------------------|-------|

|                                  |    |
|----------------------------------|----|
| CSA wire cross-section AWG, min. | 12 |
|----------------------------------|----|

|                                  |   |
|----------------------------------|---|
| CSA wire cross-section AWG, max. | 2 |
|----------------------------------|---|

|                      |       |
|----------------------|-------|
| CSA stripping length | 20 mm |
|----------------------|-------|

|                  |      |
|------------------|------|
| CSA torque, max. | 5 Nm |
|------------------|------|

|                  |        |
|------------------|--------|
| CSA torque, min. | 2.5 Nm |
|------------------|--------|

|                 |              |
|-----------------|--------------|
| CSA File Number | 042110_0_000 |
|-----------------|--------------|

#### KEMA KEUR approval

|                    |                   |
|--------------------|-------------------|
| KEMA KEUR approval | EN 60947-7-1:2009 |
|--------------------|-------------------|

|                            |     |
|----------------------------|-----|
| KEMA KEUR approval granted | yes |
|----------------------------|-----|

|                    |       |
|--------------------|-------|
| KEMA rated voltage | 800 V |
|--------------------|-------|

|                    |       |
|--------------------|-------|
| KEMA rated current | 125 A |
|--------------------|-------|

|                            |      |
|----------------------------|------|
| KEMA rated impulse voltage | 8 kV |
|----------------------------|------|

|   |                     |
|---|---------------------|
| KEMA wire cross-section single core (rigid), min. | 2.5 mm <sup>2</sup> |
|---|---------------------|

|   |                    |
|---|--------------------|
| KEMA wire cross-section single-core (rigid), max. | 50 mm <sup>2</sup> |
|---|--------------------|

|  |                     |
|--|---------------------|
| KEMA wire cross-section stranded, min. | 2.5 mm <sup>2</sup> |
|--|---------------------|

|  |                    |
|--|--------------------|
| KEMA wire cross-section stranded, max. | 35 mm <sup>2</sup> |
|--|--------------------|

# Data sheet

## 1052.1 RK 35 GN

### Approvals

#### UL Recognized

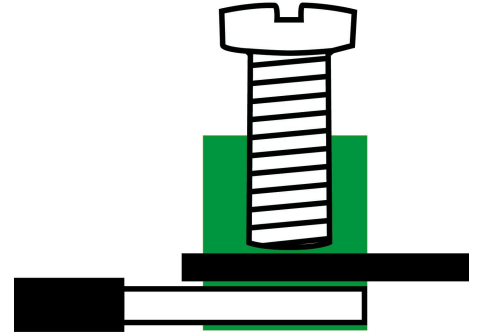
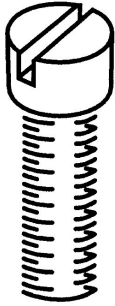
|   |          |
|---|----------|
| UL approval   | UL 1059  |
| UL Usegroup C: rated voltage                        | 600 V    |
| UL Usegroup C: rated current                        | 110 A    |
| UL wire cross-section single-core (rigid) AWG, min. | 12       |
| UL wire cross-section single-core (rigid) AWG, max. | 2        |
| UL wire cross-section stranded AWG, min.            | 12       |
| UL wire cross-section stranded AWG, max.            | 2        |
| UL torque   | 22 Lb In |
| UL wire material                                    | Cu       |
| UL factory wiring                                   | 1        |
| UL field wiring                                     | 1        |
| UL File Number                                      | E95701   |
| UL Recognized                                       | 1        |

#### German Lloyd approval

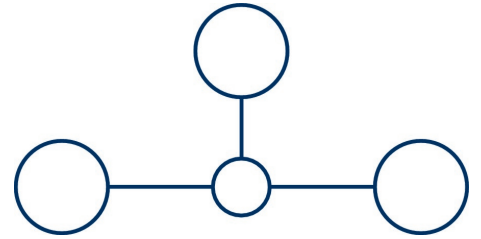
|                            |   |
|----------------------------|---|
| DNV GL Certificate number  | TAE000014T                                |
| DNV GL Location Classes    | Temperature: B, Humidity: B, Vibration: A |
| DNV GL approval granted    | 1   |
| DNV GL rated cross-section | 35 mm <sup>2</sup>                        |
| DNV GL rated current       | 135 A                                     |
| DNV GL rated voltage       | 750 V                                     |
| DNV GL test standard       | IEC 60947-7-1:2002                        |

Media

M6



EAC



### Accessories

#### Cover



Cover, Length: 38 mm, Width: 12.9 mm, Colour: Yellow

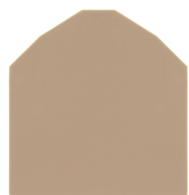
| Article number | Article name | GTIN (EAN)    | Packaging unit |
|----------------|--------------|---------------|----------------|
| <u>2820.0</u>  | AD 1/16/B YE | 4044211055462 | 20 ST          |



Cover, Length: 37.3 mm, Width: 16 mm, Colour: White

| Article number | Article name | GTIN (EAN)    | Packaging unit |
|----------------|--------------|---------------|----------------|
| <u>2970.0</u>  | AD 1/16 WH   | 4044211056995 | 20 ST          |

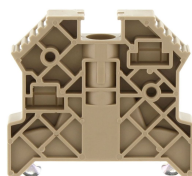
#### End plate



End plate, Width: 1.5 mm, Colour: Beige

| Article number | Article name | GTIN (EAN)    | Packaging unit |
|----------------|--------------|---------------|----------------|
| <u>2116.2</u>  | AP 35 BG     | 4044211049317 | 20             |

#### End stop



End stop, Mounting type: Mounting rail TS 35/7.5, Width: 9.5 mm, Colour: Beige

| Article number | Article name  | GTIN (EAN)    | Packaging unit |
|----------------|---------------|---------------|----------------|
| <u>2828.0</u>  | ES 35/K/ST BG | 4044211055547 | 50             |

#### Cross-connector



Cross-connector, No. of poles: 10, Mounting type: Can be screwed on, Width: 153 mm, Rated cross-section: 35 mm<sup>2</sup>, Colour: natural

| Article number | Article name | GTIN (EAN)    | Packaging unit |
|----------------|--------------|---------------|----------------|
| <u>2167.0</u>  | Q 10         | 4044211049898 | 10 ST          |



# Data sheet

## 1052.1 RK 35 GN

### Cross-connector



Cross-connector, No. of poles: 2, Mounting type: Can be screwed on, Width: 25 mm, Rated cross-section: 35 mm<sup>2</sup>, Colour: natural

| Article number | Article name | GTIN (EAN)    | Packaging unit |
|----------------|--------------|---------------|----------------|
| <u>2164.0</u>  | Q 2          | 4044211049867 | 20 ST          |



Cross-connector, No. of poles: 4, Mounting type: Can be screwed on, Width: 57 mm, Rated cross-section: 35 mm<sup>2</sup>, Colour: natural

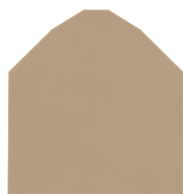
| Article number | Article name | GTIN (EAN)    | Packaging unit |
|----------------|--------------|---------------|----------------|
| <u>2166.0</u>  | Q 4          | 4044211049881 | 10 ST          |



Cross-connector, No. of poles: 3, Mounting type: Can be screwed on, Width: 41 mm, Rated cross-section: 35 mm<sup>2</sup>, Colour: natural

| Article number | Article name | GTIN (EAN)    | Packaging unit |
|----------------|--------------|---------------|----------------|
| <u>2165.0</u>  | Q 3          | 4044211049874 | 20 ST          |

### Partition plate



Partition plate, Width: 1.5 mm, Colour: Beige

| Article number | Article name | GTIN (EAN)    | Packaging unit |
|----------------|--------------|---------------|----------------|
| <u>2117.2</u>  | TW 35 BG     | 4044211049355 | 20             |

### Screwdriver



Screwdriver with bare blade, Colour: Black-grey

| Article number | Article name | GTIN (EAN)    | Packaging unit |
|----------------|--------------|---------------|----------------|
| <u>1088.0</u>  | SDB 1,2x6,5  | 4044211014810 | 1 ST           |