

# Data sheet

## 1121.2 MAG 50 BG



Measurement pick-off terminal, Screw connection, Mounting type: On base, Rated cross-section: 10 mm<sup>2</sup>, Width: 10 mm, Colour: Beige

### Business data

Article number	<u>1121.2</u>
Article name	MAG 50 BG
GTIN (EAN)	4044211080914
Packaging unit	10
Quantity unit	PC
Weight per piece (not including packaging)	12.2 g
Weight per piece (including packaging)	12.21 g
Unit of weight	G
Customs number	85369010
Country of origin	DE
Product description	Measurement pick-off terminal
Colour	Beige

# Data sheet

## 1121.2 MAG 50 BG

### Technical data

#### Dimensions

Length	50 mm
Width	10 mm
Height	34 mm

#### Ratings

Rated voltage	1000 V
Rated current	57 A
Rated cross-section	10 mm <sup>2</sup>
Rated impulse voltage	6 kV
Overvoltage category	III
Contamination degree	3

#### Connection data

Connection principle	Screw connection
Connections	1
Wire cross-section single-core (rigid) / stranded, min.	0.2 mm <sup>2</sup>
Wire cross-section single core (rigid)/stranded, max.	10 mm <sup>2</sup>
Wire cross-section stranded, min.	0.2 mm <sup>2</sup>
Wire cross-section stranded, max.	10 mm <sup>2</sup>
Wire cross-section stranded with wire-end ferrules, min.	0.2 mm <sup>2</sup>
Wire cross-section stranded with wire-end ferrules, max.	10 mm <sup>2</sup>
Wire cross-section AWG, min.	22
Wire cross-section AWG, max.	8
Stripping length	12 mm
Screw head	Slotted
Screw threading	M 4
Tightening torque, min.	1.2 Nm
Tightening torque, max.	2 Nm

#### Materials

Insulation housing	Polyamide 6.6
Flammability class UL 94	V-2
Working temperature, min.	-40 °C
Working temperature, max.	105 °C

# Data sheet

## 1121.2 MAG 50 BG



---

### Technical data

---

#### Further technical data

---

Mounting type	On base
Gauge plug acc. to EN 60 947-1	A5

---

---

### Approvals

---

#### Standards and regulations

---

EAC approval	TR ZU 004/2011
--------------	----------------

---

EAC approval granted	yes
----------------------	-----

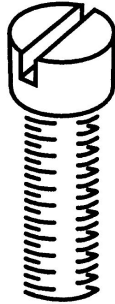
---

---

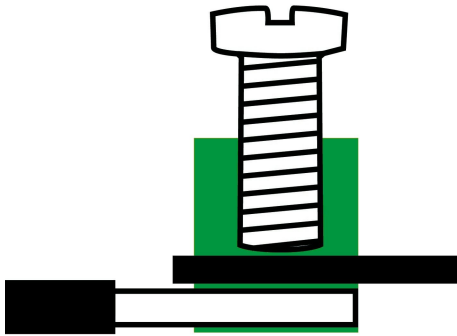
### Media

---

**M4**



**EAC**



### Accessories

#### Terminal blocks



Feed-through terminal for direct mount, Screw connection, Mounting type: Mounting surface, Rated cross-section: 50 mm<sup>2</sup>, Width: 20 mm, Colour: Beige

Article number	Article name	GTIN (EAN)	Packaging unit
<u>1582.2</u>	RK 50-D BG	4044211047702	10



Feed-through terminal, Screw connection, Mounting type: Mounting rail TS 35/7.5 and TS 32, Rated cross-section: 50 mm<sup>2</sup>, Width: 20 mm, Colour: Beige

Article number	Article name	GTIN (EAN)	Packaging unit
<u>1120.2</u>	RK 50 BG	4044211018702	10

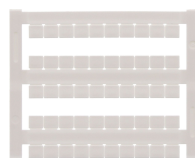
#### Screwdriver

Screwdriver with bare blade, Colour: Black-grey



Article number	Article name	GTIN (EAN)	Packaging unit
<u>1087.0</u>	SDB 0,8x4,0	4044211014803	1 ST

#### Quick marking



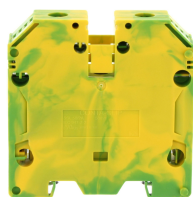
Terminal marker / Pocket Maxicard, Length: 5 mm, Width: 6 mm, Colour: White

Article number	Article name	GTIN (EAN)	Packaging unit
<u>4702.7</u>	PMC SB 6/50 WH	4044211089986	500 ST

#### ##INVERSE##CONTA-CONNECT

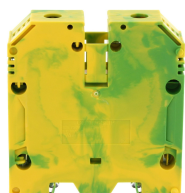
# Data sheet

## 1121.2 MAG 50 BG



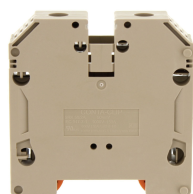
Protective earth terminal, Screw connection, Mounting type: Mounting rail TS 35/7.5, Rated cross-section: 50 mm<sup>2</sup>, Width: 18.5 mm, Colour: Green-yellow

Article number	Article name	GTIN (EAN)	Packaging unit
<u>17158.2</u>	SSL 50/2A GNYE	4044211186739	10 ST



Protective earth terminal, Screw connection, Mounting type: Mounting rail TS 35/7.5, Rated cross-section: 70 mm<sup>2</sup>, Width: 20.5 mm, Colour: Green-yellow

Article number	Article name	GTIN (EAN)	Packaging unit
<u>17163.2</u>	SSL 70/2A GNYE	4044211189297	10 ST



Feed-through terminal, Screw connection, Mounting type: Mounting rail TS 35/7.5, Rated cross-section: 50 mm<sup>2</sup>, Width: 18.5 mm, Colour: Beige

Article number	Article name	GTIN (EAN)	Packaging unit
<u>17156.2</u>	SRK 50/2A BG	4044211186715	10



Feed-through terminal, Screw connection, Mounting type: Mounting rail TS 35/7.5, Rated cross-section: 70 mm<sup>2</sup>, Width: 20.5 mm, Colour: Beige

Article number	Article name	GTIN (EAN)	Packaging unit
<u>17161.2</u>	SRK 70/2A BG	4044211189273	10



Feed-through terminal, Screw connection, Mounting type: Mounting rail TS 35/7.5, Rated cross-section: 50 mm<sup>2</sup>, Width: 18.5 mm, Colour: Black-yellow

Article number	Article name	GTIN (EAN)	Packaging unit
<u>17157.2</u>	SRK 50/2A/PE BKYE	4044211186722	10 ST



Feed-through terminal, Screw connection, Mounting type: Mounting rail TS 35/7.5, Rated cross-section: 70 mm<sup>2</sup>, Width: 20.5 mm, Colour: Black-yellow

Article number	Article name	GTIN (EAN)	Packaging unit
<u>17162.2</u>	SRK 70/2A/PE BKYE	4044211186777	10 ST

# Data sheet

## 1121.2 MAG 50 BG



Feed-through terminal for direct mount, Screw connection, Mounting type: Mounting surface, Rated cross-section: 50 mm<sup>2</sup>, Width: 20 mm, Colour: Beige

Article number	Article name	GTIN (EAN)	Packaging unit
<u>1582.2</u>	RK 50-D BG	4044211047702	10



Feed-through terminal, Screw connection, Mounting type: Mounting rail TS 35/7.5 and TS 32, Rated cross-section: 50 mm<sup>2</sup>, Width: 20 mm, Colour: Beige

Article number	Article name	GTIN (EAN)	Packaging unit
<u>1120.2</u>	RK 50 BG	4044211018702	10



Ex feed-through terminal ATEX-certified, Screw connection, Mounting type: Mounting rail TS 35/7.5 and TS 32, Rated cross-section: 50 mm<sup>2</sup>, Width: 20 mm, Colour: Beige

Article number	Article name	GTIN (EAN)	Packaging unit
<u>1473.2</u>	RK 50 Ex BG	4044211107901	10