

# Data sheet

## 1122.6 RK 95 GR



Feed-through terminal, Screw connection, Mounting type: Mounting rail TS 35/7.5 and TS 32, Rated cross-section: 95 mm<sup>2</sup>, Width: 25 mm, Colour: Grey

**RAL:** 7032

### Business data

Article number	<u>1122.6</u>
Article name	RK 95 GR
GTIN (EAN)	4044211127343
Packaging unit	10
Quantity unit	PC
Weight per piece (not including packaging)	179 g
Weight per piece (including packaging)	189.6 g
Unit of weight	G
Customs number	85369010
Country of origin	CZ
Prio-Article	1122.2
Product description	Feed-through terminal

# Data sheet

## 1122.6 RK 95 GR

---

### Technical data

---

#### Dimensions

Length	84 mm
Width	25 mm
Height TS 35/7.5	88.5 mm
Height TS 32	94 mm

#### Ratings

Rated voltage	1000 V
Rated current	232 A
Rated cross-section	95 mm <sup>2</sup>
Rated impulse voltage	8 kV
Overvoltage category	III
Contamination degree	3
Maximum power dissipation for nominal condition	7.42 W

### Technical data

#### Connection data

Connection principle	Screw connection
Connection position	Lateral
Connections	2
Number of terminals per level	2
Number of levels	1
Wire cross-section single-core (rigid) / stranded, min.	25 mm <sup>2</sup>
Wire cross-section single core (rigid)/stranded, max.	95 mm <sup>2</sup>
Wire cross-section stranded, min.	25 mm <sup>2</sup>
Wire cross-section stranded, max.	95 mm <sup>2</sup>
Wire cross-section stranded with wire-end ferrules,min.	25 mm <sup>2</sup>
Wire cross-section stranded with wire-end ferrules,max.	95 mm <sup>2</sup>
Wire cross-section AWG, min.	2
Wire cross-section AWG, max.	4/0
Stripping length	30 mm
Screw head	Inner hex (Allen)
Screw threading	M 8
Tightening torque, min.	8 Nm
Tightening torque, max.	12 Nm
Wire cross-section single-core (rigid) / stranded, AWGmax.	4/0
Wire cross-section single-core (rigid) / stranded, AWGmin.	2
Wire cross-section stranded, AWG max.	4/0
Wire cross-section stranded, AWG min.	2
Wire cross-section stranded with wire-end ferrules, AWG min.	2

#### Materials

Insulation housing	Polyamide 6.6
Flammability class UL 94	V-2
Working temperature, min.	-40 °C
Working temperature, max.	105 °C

#### Further technical data

Mounting type	Mounting rail TS 35/7.5 and TS 32
Gauge plug acc. to EN 60 947-1	B12
Banded wire up to	16,6 x 6,0 mm

# Data sheet

## 1122.6 RK 95 GR



---

### Technical data

---

#### Environmental Product Compliance

---

REACH Conform	yes
REACH Reference date	2024-01-23
REACH Candidate Substance Note	No
RoHS Conform	yes

---

### Approvals

#### Standards and regulations

EAC approval	TR ZU 004/2011
--------------	----------------

EAC approval granted	yes
----------------------	-----

#### CSA approval

CSA approval	C22.2 No 158
--------------	--------------

CSA approval granted	yes
----------------------	-----

CSA Usegroup C: rated voltage	600 V
-------------------------------	-------

CSA Usegroup C: rated current	230 A
-------------------------------	-------

CSA wire cross-section AWG, min.	2
----------------------------------	---

CSA wire cross-section AWG, max.	4/0
----------------------------------	-----

CSA stripping length	30 mm
----------------------	-------

CSA File Number	042110_0_000
-----------------	--------------

#### CSAus approval

CSAus approval	UL 1059
----------------	---------

CSAus approval granted	yes
------------------------	-----

CSAus Usegroup C: rated voltage	600 V
---------------------------------	-------

CSAus Usegroup C: rated current	230 A
---------------------------------	-------

CSAus wire cross-section AWG, min.	2
------------------------------------	---

CSAus wire cross-section AWG, max.	4/0
------------------------------------	-----

CSAus stripping length	30 mm
------------------------	-------

CSAus File Number	042110_0_000
-------------------	--------------

#### KEMA KEUR approval

KEMA KEUR approval	EN 60947-7-1:2009
--------------------	-------------------

KEMA KEUR approval granted	yes
----------------------------	-----

KEMA rated voltage	1000 V
--------------------	--------

KEMA rated current	232 A
--------------------	-------

KEMA rated impulse voltage	12 kV
----------------------------	-------

KEMA wire cross-section single core (rigid), min.	25 mm <sup>2</sup>
---	--------------------

KEMA wire cross-section single-core (rigid), max.	95 mm <sup>2</sup>
---	--------------------

KEMA wire cross-section stranded, min.	25 mm <sup>2</sup>
--	--------------------

KEMA wire cross-section stranded, max.	95 mm <sup>2</sup>
--	--------------------

KEMA stripping length	30 mm
-----------------------	-------

KEMA torque, min.	8 Nm
-------------------	------

KEMA torque, max.	12 Nm
-------------------	-------

### Approvals

#### UL Recognized

UL approval	UL 1059
UL Usegroup B: rated voltage	600 V
UL Usegroup B: rated current	230 A
UL Usegroup C: rated voltage	600 V
UL Usegroup C: rated current	230 A
UL wire cross-section single-core (rigid) AWG, min.	2
UL wire cross-section single-core (rigid) AWG, max.	4/0
UL wire cross-section stranded AWG, min.	2
UL wire cross-section stranded AWG, max.	4/0
UL torque	89 Lb In
UL wire material	Cu
UL factory wiring	1
UL File Number	E95701
UL Recognized	1

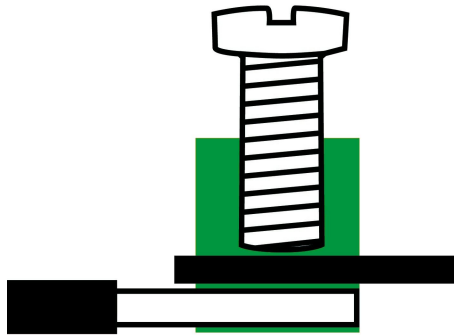
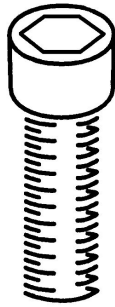
#### German Lloyd approval

DNV GL Certificate number	TAE000014T
DNV GL Location Classes	Temperature: B, Humidity: B, Vibration: A
DNV GL approval granted	1
DNV GL rated cross-section	95 mm <sup>2</sup>
DNV GL rated current	230 A
DNV GL rated voltage	600 V
DNV GL test standard	IEC 60947-7-1:2002

Media



M8



EAC



### Accessories

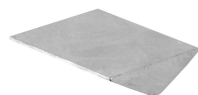
#### Cover



Cover, Length: 59 mm, Width: 15 mm, Colour: Yellow

Article number	Article name	GTIN (EAN)	Packaging unit
<u>2804.0</u>	AD 1/95/B YE	4044211055356	20 ST

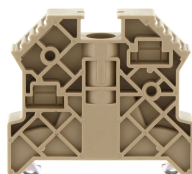
#### Inlay profile



Inlay plate, Colour: natural

Article number	Article name	GTIN (EAN)	Packaging unit
<u>2275.0</u>	EP 95	4044211050825	10 ST

#### End stop



End stop, Mounting type: Mounting rail TS 35/7.5, Width: 9.5 mm, Colour: Beige

Article number	Article name	GTIN (EAN)	Packaging unit
<u>2828.0</u>	ES 35/K/ST BG	4044211055547	50

#### Allen key socket wrench



Inner hex key with bare blade

Article number	Article name	GTIN (EAN)	Packaging unit
<u>2772.0</u>	ISKS 6	4044211055028	1 ST

#### Measurement pick-off terminal



# Data sheet

## 1122.6 RK 95 GR



Measurement pick-off terminal, Screw connection, Mounting type: On base, Rated cross-section: 10 mm<sup>2</sup>, Width: 10 mm, Colour: Beige

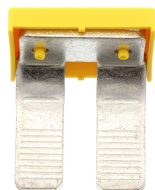
Article number	Article name	GTIN (EAN)	Packaging unit
<u>1123.2</u>	MAG 95 BG	4044211080938	10 ST

### Insulated cross-connector



External insulated cross-connector, No. of poles: 3, Mounting type: Plug in, Width: 70.44 mm, Rated current: 232 A; Colour: Yellow

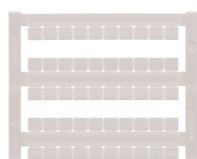
Article number	Article name	GTIN (EAN)	Packaging unit
<u>2766.2</u>	AQI 3/95 YE	4044211054960	5



External insulated cross-connector, No. of poles: 2, Mounting type: Plug in, Width: 44.86 mm, Rated current: 232 A; Colour: Yellow

Article number	Article name	GTIN (EAN)	Packaging unit
<u>2765.2</u>	AQI 2/95 YE	4044211054953	5

### Quick marking



Terminal marker / Pocket Maxicard, Length: 5 mm, Width: 6 mm, Colour: White

Article number	Article name	GTIN (EAN)	Packaging unit
<u>4702.7</u>	PMC SB 6/50 WH	4044211089986	500 ST

### ##INVERSE##CONTA-CONNECT



Measurement pick-off terminal, Screw connection, Mounting type: On base, Rated cross-section: 10 mm<sup>2</sup>, Width: 10 mm, Colour: Beige

Article number	Article name	GTIN (EAN)	Packaging unit
<u>1123.2</u>	MAG 95 BG	4044211080938	10 ST