

Feed-through terminal, Screw connection, Mounting type: Mounting rail TS 35/7.5 and TS 32, Rated cross-section: 16 mm<sup>2</sup>, Width: 12 mm, Colour: Blue

**RAL:** Ähnlich 5005

### Business data

|  |                       |
|--|-----------------------|
| Article number                             | <u>1162.5</u>         |
| Article name                               | RK 16/Z BU            |
| GTIN (EAN)                                 | 4044211023652         |
| Packaging unit                             | 50                    |
| Quantity unit                              | PC                    |
| Weight per piece (not including packaging) | 27.8 g                |
| Weight per piece (including packaging)     | 29.68 g               |
| Unit of weight                             | G                     |
| Customs number                             | 85369010              |
| Country of origin                          | DE                    |
| Prio-Article                               | 1162.2                |
| Product description                        | Feed-through terminal |

# Data sheet

## 1162.5 RK 16/Z BU

### Technical data

#### Dimensions

|                  |         |
|------------------|---------|
| Length           | 50 mm   |
| Width            | 12 mm   |
| Height TS 35/7.5 | 58.5 mm |
| Height TS 32     | 63 mm   |

#### Ratings

|   |                    |
|---|--------------------|
| Rated voltage                                   | 800 V              |
| Rated current                                   | 76 A               |
| Rated cross-section                             | 16 mm <sup>2</sup> |
| Rated impulse voltage                           | 8 kV               |
| Overvoltage category                            | III                |
| Contamination degree                            | 3                  |
| Maximum power dissipation for nominal condition | 2.43 W             |

#### Connection data

|  |                     |
|--|---------------------|
| Connection principle                                     | Screw connection    |
| Connection position                                      | Lateral             |
| Connections  | 2                   |
| Number of terminals per level                            | 2                   |
| Number of levels   | 1                   |
| Wire cross-section single-core (rigid) / stranded, min.  | 2.5 mm <sup>2</sup> |
| Wire cross-section single core (rigid)/stranded, max.    | 25 mm <sup>2</sup>  |
| Wire cross-section stranded, min.                        | 2.5 mm <sup>2</sup> |
| Wire cross-section stranded, max.                        | 16 mm <sup>2</sup>  |
| Wire cross-section stranded with wire-end ferrules, min. | 2.5 mm <sup>2</sup> |
| Wire cross-section stranded with wire-end ferrules, max. | 16 mm <sup>2</sup>  |
| Wire cross-section AWG, min.                             | 10                  |
| Wire cross-section AWG, max.                             | 6                   |
| Stripping length   | 15 mm               |
| Screw head   | Slotted             |
| Screw threading  | M 5                 |
| Tightening torque, min.                                  | 2 Nm                |
| Tightening torque, max.                                  | 4 Nm                |

# Data sheet

## 1162.5 RK 16/Z BU

---

### Technical data

---

#### Materials

|                           |               |
|---------------------------|---------------|
| Insulation housing        | Polyamide 6.6 |
| Flammability class UL 94  | V-2           |
| Working temperature, min. | -40 °C        |
| Working temperature, max. | 105 °C        |

#### Further technical data

|                                     |                                   |
|-------------------------------------|-----------------------------------|
| Mounting type                       | Mounting rail TS 35/7.5 and TS 32 |
| Gauge plug acc. to EN 60 947-1      | B7                                |
| Number of cross-connection channels | 1                                 |
| End plate required                  | ✓                                 |

#### Environmental Product Compliance

|                                |            |
|--------------------------------|------------|
| REACH Conform                  | yes        |
| REACH Reference date           | 2024-01-23 |
| REACH Candidate Substance Note | No         |
| RoHS Conform                   | yes        |

### Approvals

#### Standards and regulations

|              |                |
|--------------|----------------|
| EAC approval | TR ZU 004/2011 |
|--------------|----------------|

|                      |     |
|----------------------|-----|
| EAC approval granted | yes |
|----------------------|-----|

#### CSA approval

|              |              |
|--------------|--------------|
| CSA approval | C22.2 No 158 |
|--------------|--------------|

|                      |     |
|----------------------|-----|
| CSA approval granted | yes |
|----------------------|-----|

|                               |       |
|-------------------------------|-------|
| CSA Usegroup C: rated voltage | 600 V |
|-------------------------------|-------|

|                               |      |
|-------------------------------|------|
| CSA Usegroup C: rated current | 70 A |
|-------------------------------|------|

|                                  |    |
|----------------------------------|----|
| CSA wire cross-section AWG, min. | 10 |
|----------------------------------|----|

|                                  |   |
|----------------------------------|---|
| CSA wire cross-section AWG, max. | 6 |
|----------------------------------|---|

|                      |       |
|----------------------|-------|
| CSA stripping length | 15 mm |
|----------------------|-------|

|                  |      |
|------------------|------|
| CSA torque, max. | 4 Nm |
|------------------|------|

|                  |      |
|------------------|------|
| CSA torque, min. | 2 Nm |
|------------------|------|

|                 |              |
|-----------------|--------------|
| CSA File Number | 042110_0_000 |
|-----------------|--------------|

#### KEMA KEUR approval

|                    |                   |
|--------------------|-------------------|
| KEMA KEUR approval | EN 60947-7-1:2009 |
|--------------------|-------------------|

|                            |     |
|----------------------------|-----|
| KEMA KEUR approval granted | yes |
|----------------------------|-----|

|                    |       |
|--------------------|-------|
| KEMA rated voltage | 800 V |
|--------------------|-------|

|                    |      |
|--------------------|------|
| KEMA rated current | 76 A |
|--------------------|------|

|                            |      |
|----------------------------|------|
| KEMA rated impulse voltage | 8 kV |
|----------------------------|------|

|   |                     |
|---|---------------------|
| KEMA wire cross-section single core (rigid), min. | 2.5 mm <sup>2</sup> |
|---|---------------------|

|   |                    |
|---|--------------------|
| KEMA wire cross-section single-core (rigid), max. | 25 mm <sup>2</sup> |
|---|--------------------|

|  |                     |
|--|---------------------|
| KEMA wire cross-section stranded, min. | 2.5 mm <sup>2</sup> |
|--|---------------------|

|  |                    |
|--|--------------------|
| KEMA wire cross-section stranded, max. | 16 mm <sup>2</sup> |
|--|--------------------|

### Approvals

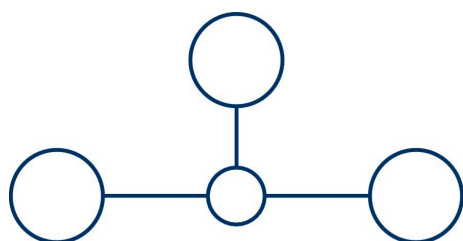
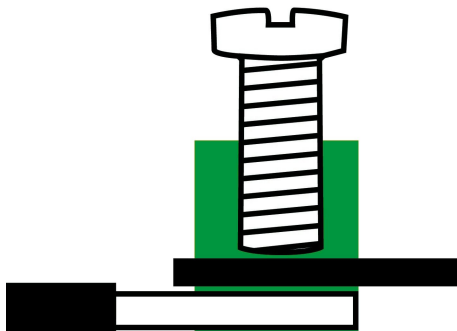
#### UL Recognized

|   |            |
|---|------------|
| UL approval   | UL 1059    |
| UL Usegroup C: rated voltage                        | 600 V      |
| UL Usegroup C: rated current                        | 65 A       |
| UL wire cross-section single-core (rigid) AWG, min. | 10         |
| UL wire cross-section single-core (rigid) AWG, max. | 6          |
| UL wire cross-section stranded AWG, min.            | 10         |
| UL wire cross-section stranded AWG, max.            | 6          |
| UL torque   | 10.5 Lb In |
| UL wire material                                    | Cu         |
| UL factory wiring                                   | 1          |
| UL field wiring                                     | 1          |
| UL File Number                                      | E95701     |
| UL Recognized                                       | 1          |

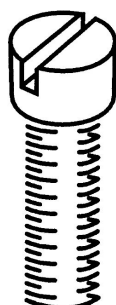
#### German Lloyd approval

|                            |   |
|----------------------------|---|
| DNV GL Certificate number  | TAE000014T                                |
| DNV GL Location Classes    | Temperature: B, Humidity: B, Vibration: A |
| DNV GL approval granted    | 1   |
| DNV GL rated cross-section | 16 mm <sup>2</sup>                        |
| DNV GL rated current       | 82 A                                      |
| DNV GL rated voltage       | 750 V                                     |
| DNV GL test standard       | IEC 60947-7-1:2002                        |

Media



**M5**



### Accessories

#### Cover



Cover, Length: 30 mm, Width: 10.7 mm, Colour: Yellow

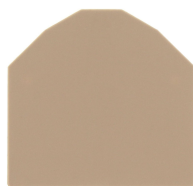
| Article number | Article name | GTIN (EAN)    | Packaging unit |
|----------------|--------------|---------------|----------------|
| <u>2819.0</u>  | AD 1/12/B YE | 4044211055455 | 20 ST          |



Cover, Length: 26.5 mm, Width: 12 mm, Colour: White

| Article number | Article name | GTIN (EAN)    | Packaging unit |
|----------------|--------------|---------------|----------------|
| <u>2969.0</u>  | AD 1/12 WH   | 4044211056988 | 20 ST          |

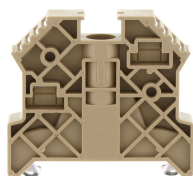
#### End plate



End plate, Width: 1.5 mm, Colour: Beige

| Article number | Article name | GTIN (EAN)    | Packaging unit |
|----------------|--------------|---------------|----------------|
| <u>2104.2</u>  | AP 16 BG     | 4044211049164 | 20             |

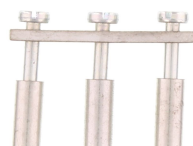
#### End stop



End stop, Mounting type: Mounting rail TS 35/7.5, Width: 9.5 mm, Colour: Beige

| Article number | Article name  | GTIN (EAN)    | Packaging unit |
|----------------|---------------|---------------|----------------|
| <u>2828.0</u>  | ES 35/K/ST BG | 4044211055547 | 50             |

#### Cross-connector



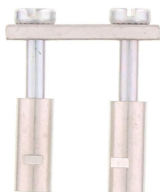
Cross-connector, No. of poles: 3, Mounting type: Can be screwed on, Width: 32 mm, Rated cross-section: 16 mm<sup>2</sup>, Colour: natural

| Article number | Article name | GTIN (EAN)    | Packaging unit |
|----------------|--------------|---------------|----------------|
| <u>2113.0</u>  | Q 3          | 4044211049270 | 20 ST          |

# Data sheet

## 1162.5 RK 16/Z BU

### Cross-connector



Cross-connector, No. of poles: 2, Mounting type: Can be screwed on, Width: 20.1 mm, Rated cross-section: 16 mm<sup>2</sup>, Colour: natural

| Article number | Article name | GTIN (EAN)    | Packaging unit |
|----------------|--------------|---------------|----------------|
| <u>2112.0</u>  | Q 2          | 4044211049263 | 20 ST          |



Cross-connector, No. of poles: 10, Mounting type: Can be screwed on, Width: 115.3 mm, Rated cross-section: 16 mm<sup>2</sup>, Colour: natural

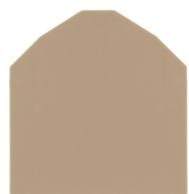
| Article number | Article name | GTIN (EAN)    | Packaging unit |
|----------------|--------------|---------------|----------------|
| <u>2115.0</u>  | Q 10         | 4044211049294 | 10 ST          |



Cross-connector, No. of poles: 4, Mounting type: Can be screwed on, Width: 43.9 mm, Rated cross-section: 16 mm<sup>2</sup>, Colour: natural

| Article number | Article name | GTIN (EAN)    | Packaging unit |
|----------------|--------------|---------------|----------------|
| <u>2114.0</u>  | Q 4          | 4044211049287 | 10 ST          |

### Partition plate



Partition plate, Width: 1.5 mm, Colour: Beige

| Article number | Article name | GTIN (EAN)    | Packaging unit |
|----------------|--------------|---------------|----------------|
| <u>2105.2</u>  | TW 16 BG     | 4044211049195 | 20             |

### Screwdriver



Screwdriver with bare blade, Colour: Black-grey

| Article number | Article name | GTIN (EAN)    | Packaging unit |
|----------------|--------------|---------------|----------------|
| <u>1087.0</u>  | SDB 0,8x4,0  | 4044211014803 | 1 ST           |