

Ex double-level terminal ATEX-certified, Screw connection, Mounting type: Mounting rail TS 35/7.5 and TS 32, Rated cross-section: 2.5 mm², Width: 5 mm, Colour: Beige

Business data

| | |
|--|---|
| Article number | <u>1428.2</u> |
| Article name | RKD 2,5 Ex BG |
| GTIN (EAN) | 4044211044756 |
| Explosion-proof version (EEx e) | yes |
| Packaging unit | 100 |
| Quantity unit | PC |
| Weight per piece (not including packaging) | 10.2 g |
| Weight per piece (including packaging) | 11 g |
| Unit of weight | G |
| Customs number | 85369010 |
| Country of origin | DE |
| Prio-Article | 1428.2 |
| Product description | Ex double-level terminal ATEX-certified |

Technical data

Dimensions

| | |
|------------------|---------|
| Length | 60.2 mm |
| Width | 5 mm |
| Height TS 35/7.5 | 61 mm |
| Height TS 32 | 65.5 mm |

Ratings

| | |
|---|---------------------|
| Rated voltage | 400 V |
| Rated current | 26 A |
| Rated cross-section | 2.5 mm ² |
| Rated impulse voltage | 6 kV |
| Overvoltage category | III |
| Contamination degree | 3 |
| Maximum power dissipation for nominal condition | 1.66 W |

Connection data

| | |
|--|---------------------|
| Connection principle | Screw connection |
| Connection position | Lateral |
| Connections | 2 x 2 |
| Number of terminals per level | 2 |
| Number of levels | 2 |
| Wire cross-section single-core (rigid) / stranded, min. | 0.2 mm ² |
| Wire cross-section single core (rigid)/stranded, max. | 4 mm ² |
| Wire cross-section stranded, min. | 0.2 mm ² |
| Wire cross-section stranded, max. | 4 mm ² |
| Wire cross-section stranded with wire-end ferrules, min. | 0.2 mm ² |
| Wire cross-section stranded with wire-end ferrules, max. | 2.5 mm ² |
| Wire cross-section AWG, min. | 22 |
| Wire cross-section AWG, max. | 14 |
| Stripping length | 7 mm |
| Screw head | Slotted |
| Screw threading | M 2,5 |
| Tightening torque, min. | 0.4 Nm |
| Tightening torque, max. | 0.8 Nm |

Technical data

Materials

| | |
|---------------------------|---------------|
| Insulation housing | Polyamide 6.6 |
| Flammability class UL 94 | V-2 |
| Working temperature, min. | -40 °C |
| Working temperature, max. | 105 °C |

Further technical data

| | |
|-------------------------------------|-----------------------------------|
| Mounting type | Mounting rail TS 35/7.5 and TS 32 |
| Gauge plug acc. to EN 60 947-1 | A3 |
| Number of cross-connection channels | 2 |
| End plate required | ✓ |
| Number of test pick-off options | 1 |

Environmental Product Compliance

| | |
|--------------------------------|------------------------|
| REACH Conform | Yes, yes |
| REACH Reference date | 2024-06-27, 2024-06-27 |
| REACH Candidate Substance Note | No |
| RoHS Conform | Yes, yes |

Approvals

Standards and regulations

| | |
|---------------------------|-------------------|
| ATEX certification number | NEMKO ATEX 1136 U |
| EAC approval | TR ZU 004/2011 |
| EAC approval granted | yes |

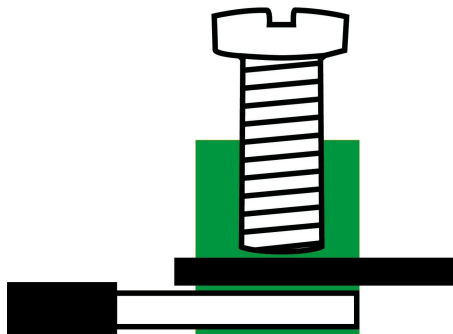
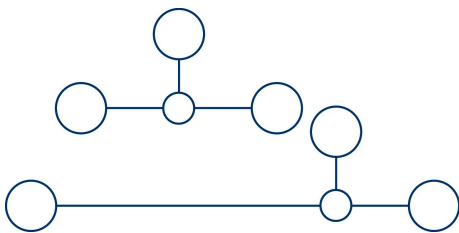
KEMA KEUR approval

| | |
|---|---------------------|
| KEMA KEUR approval | EN 60947-7-1:2009 |
| KEMA KEUR approval granted | yes |
| KEMA rated voltage | 500 V |
| KEMA rated current | 24 A |
| KEMA rated impulse voltage | 6 kV |
| KEMA wire cross-section single core (rigid), min. | 0.2 mm ² |
| KEMA wire cross-section single-core (rigid), max. | 4 mm ² |
| KEMA wire cross-section stranded, min. | 0.2 mm ² |
| KEMA wire cross-section stranded, max. | 4 mm ² |

UL Recognized

| | |
|---|-----------|
| UL approval | UL 1059 |
| UL Usegroup C: rated voltage | 300 V |
| UL Usegroup C: rated current | 20 A |
| UL wire cross-section single-core (rigid) AWG, min. | 22 |
| UL wire cross-section single-core (rigid) AWG, max. | 12 |
| UL wire cross-section stranded AWG, min. | 22 |
| UL wire cross-section stranded AWG, max. | 12 |
| UL torque | 5.3 Lb In |
| UL wire material | Cu |
| UL factory wiring | 1 |
| UL field wiring | 1 |
| UL Recognized | 1 |

Media



Accessories

End plate



End plate, Width: 1.5 mm, Colour: Beige

| Article number | Article name | GTIN (EAN) | Packaging unit |
|----------------|--------------|---------------|----------------|
| <u>2101.2</u> | AP 4 BG | 4044211151652 | 20 |

Insulation plate



Insulation plate, Colour: Beige

| Article number | Article name | GTIN (EAN) | Packaging unit |
|----------------|--------------|---------------|----------------|
| <u>2566.2</u> | TRS 3 BG | 4044211053567 | 100 ST |

Cross-connector



Cross-connector, No. of poles: 4, Mounting type: Can be screwed on, Width: 19.3 mm, Rated cross-section: 2.5 mm², Colour: natural

| Article number | Article name | GTIN (EAN) | Packaging unit |
|----------------|--------------|---------------|----------------|
| <u>2569.0</u> | Q 4 | 4044211053598 | 20 ST |



Cross-connector, No. of poles: 10, Mounting type: Can be screwed on, Width: 49.9 mm, Rated cross-section: 2.5 mm², Colour: natural

| Article number | Article name | GTIN (EAN) | Packaging unit |
|----------------|--------------|---------------|----------------|
| <u>2570.0</u> | Q 10 | 4044211053604 | 10 ST |



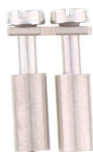
Cross-connector, No. of poles: 3, Mounting type: Can be screwed on, Width: 14.2 mm, Rated cross-section: 2.5 mm², Colour: natural

| Article number | Article name | GTIN (EAN) | Packaging unit |
|----------------|--------------|---------------|----------------|
| <u>2568.0</u> | Q 3 | 4044211053581 | 50 ST |

Data sheet

1428.2 RKD 2,5 Ex BG

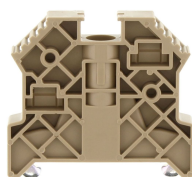
Cross-connector



Cross-connector, No. of poles: 2, Mounting type: Can be screwed on, Width: 9.1 mm, Rated cross-section: 2.5 mm², Colour: natural

| Article number | Article name | GTIN (EAN) | Packaging unit |
|----------------|--------------|---------------|----------------|
| <u>2567.0</u> | Q 2 | 4044211053574 | 50 ST |

End stop



End stop, Mounting type: Mounting rail TS 35/7.5, Width: 9.5 mm, Colour: Beige

| Article number | Article name | GTIN (EAN) | Packaging unit |
|----------------|---------------|---------------|----------------|
| <u>2828.0</u> | ES 35/K/ST BG | 4044211055547 | 50 |

Test adapters



Test adapter, Length: 37.3 mm, Pitch size: 5 mm, Colour: Beige

| Article number | Article name | GTIN (EAN) | Packaging unit |
|----------------|--------------|---------------|----------------|
| <u>2821.0</u> | TAD 5/1/S | 4044211055479 | 10 ST |

Screwdriver



Screwdriver with bare blade, Colour: Black-grey

| Article number | Article name | GTIN (EAN) | Packaging unit |
|----------------|--------------|---------------|----------------|
| <u>1085.0</u> | SDB 0,5x3,0 | 4044211014643 | 1 ST |

Quick marking



Terminal marker / Pocket Maxicard, Length: 5 mm, Width: 5 mm, Colour: White

| Article number | Article name | GTIN (EAN) | Packaging unit |
|----------------|----------------|---------------|----------------|
| <u>4600.7</u> | PMC SB 5/50 WH | 4044211088903 | 500 ST |

##INVERSE##CONTA-CONNECT



Test adapter, Length: 37.3 mm, Pitch size: 5 mm, Colour: Beige

| Article number | Article name | GTIN (EAN) | Packaging unit |
|----------------|--------------|---------------|----------------|
| <u>2821.0</u> | TAD 5/1/S | 4044211055479 | 10 ST |