

Feed-through terminal, Screw connection, Mounting type: Mounting rail TS 35/7.5, Rated cross-section: 50 mm², Width: 18.5 mm, Colour: Beige

Business data

Article number	<u>17156.2</u>
Article name	SRK 50/2A BG
GTIN (EAN)	4044211186715
Packaging unit	10
Quantity unit	PC
Weight per piece (not including packaging)	101 g
Weight per piece (including packaging)	111 g
Unit of weight	G
Customs number	85369010
Country of origin	CZ
Prio-Article	17156.2
Product description	Feed-through terminal

Technical data

Dimensions

Length	72.5 mm
Width	18.5 mm
Height TS 35/7.5	74 mm

Ratings

Rated voltage	1000 V
Rated current	150 A
Current load, max.	192 A
Rated cross-section	50 mm ²
Rated impulse voltage	8 kV
Overvoltage category	III
Contamination degree	3
Maximum power dissipation for nominal condition	4.8 W

Technical data

Connection data

Connection principle	Screw connection
Connection position	Lateral
Connections	2
Number of terminals per level	2
Number of levels	1
Wire cross-section single-core (rigid) / stranded, min.	10 mm ²
Wire cross-section single core (rigid)/stranded, max.	70 mm ²
Wire cross-section stranded, min.	10 mm ²
Wire cross-section stranded, max.	50 mm ²
Wire cross-section stranded with wire-end ferrules,min.	10 mm ²
Wire cross-section stranded with wire-end ferrules,max.	50 mm ²
Wire cross-section AWG, min.	8
Stripping length	24 mm
Screw head	Inner hex (Allen)
Screw threading	M 6
Tightening torque, min.	3.5 Nm
Tightening torque, max.	6 Nm
Wire cross-section single-core (rigid) / stranded, AWGmin.	8
Wire cross-section stranded, AWG min.	8
Wire cross-section stranded with wire-end ferrules,AWG max.	1
Wire cross-section stranded with wire-end ferrules, AWG min.	8

Materials

Insulation housing	Polyamide 6.6
Flammability class UL 94	V-0
Working temperature, min.	-40 °C
Working temperature, max.	120 °C

Further technical data

Mounting type	Mounting rail TS 35/7,5
Gauge plug acc. to EN 60 947-1	B10
Number of cross-connection channels	1
Number of test pick-off options	1

Technical data

Environmental Product Compliance

REACH Conform	Yes, yes
---------------	----------

REACH Reference date	2023-06-14, 2024-06-27, 2024-06-27
----------------------	------------------------------------

REACH Candidate Substance Note	No
--------------------------------	----

RoHS Conform	Yes, yes
--------------	----------

Approvals

Standards and regulations

EAC approval	TR ZU 004/2011
--------------	----------------

EAC approval granted	yes
----------------------	-----

cUL Recognized

cUL approval	C22.2 No 158
--------------	--------------

cUL Usegroup B: rated voltage	600 V
-------------------------------	-------

cUL Usegroup B: rated current	150 A
-------------------------------	-------

cUL Usegroup C: rated voltage	600 V
-------------------------------	-------

cUL Usegroup D: rated voltage	600 V
-------------------------------	-------

cUL Usegroup D: rated current	150 A
-------------------------------	-------

cUL Usegroup E: rated voltage	1000 V
-------------------------------	--------

cUL Usegroup E: rated current	150 A
-------------------------------	-------

cUL wire cross-section single-core (rigid) AWG, min.	10
--	----

cUL wire cross-section single-core (rigid) AWG, max.	1/0
--	-----

cUL wire cross-section stranded AWG, min.	8
---	---

cUL wire cross-section stranded AWG, max.	1/0
---	-----

cUL torque, min.	3.5 Nm
------------------	--------

cUL torque, max.	6 Nm
------------------	------

cUL wire material	Cu
-------------------	----

cUL File Number	E95701
-----------------	--------

cUL Recognized	1
----------------	---

KEMA KEUR approval

KEMA KEUR approval	EN 60947-7-1:2009
--------------------	-------------------

KEMA KEUR approval granted	yes
----------------------------	-----

KEMA rated voltage	1000 V
--------------------	--------

KEMA rated current	150 A
--------------------	-------

KEMA rated impulse voltage	8 kV
----------------------------	------

KEMA wire cross-section single core (rigid), min.	10 mm ²
---	--------------------

KEMA wire cross-section single-core (rigid), max.	70 mm ²
---	--------------------

KEMA wire cross-section stranded, min.	10 mm ²
--	--------------------

KEMA wire cross-section stranded, max.	70 mm ²
--	--------------------

KEMA torque, min.	3.5 Nm
-------------------	--------

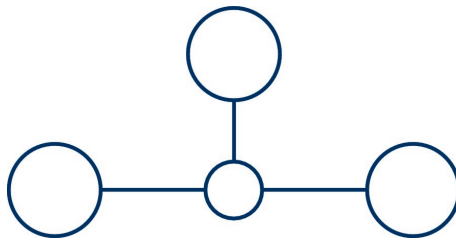
KEMA torque, max.	6 Nm
-------------------	------

Approvals

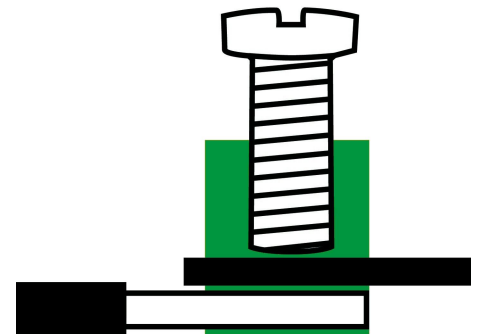
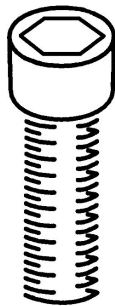
UL Recognized

UL approval	UL 1059
UL Usegroup B: rated voltage	600 V
UL Usegroup B: rated current	150 A
UL Usegroup C: rated voltage	600 V
UL Usegroup C: rated current	150 A
UL Usegroup D: rated voltage	600 V
UL Usegroup D: rated current	150 A
UL Usegroup E: rated voltage	1000 V
UL Usegroup E: rated current	150 A
UL wire cross-section single-core (rigid) AWG, min.	10
UL wire cross-section single-core (rigid) AWG, max.	1/0
UL wire cross-section stranded AWG, min.	10
UL wire cross-section stranded AWG, max.	1/0
UL torque, min.	30.9 Lb In.
UL torque, max.	53.1 Lb In.
UL wire material	Cu
UL factory wiring	1
UL field wiring	1
UL File Number	E95701
UL Recognized	1

Media



M6



Accessories

Cover

Cover, Length: 51.5 mm, Width: 18 mm, Colour: White



Article number	Article name	GTIN (EAN)	Packaging unit
<u>17284.7</u>	SAD 1/18/B WH	4044211205539	10 ST

Cover, Length: 51.5 mm, Width: 18 mm, Colour: Yellow



Article number	Article name	GTIN (EAN)	Packaging unit
<u>17283.8</u>	SAD 1/18/B YE	4044211205522	10 ST

Measurement pick-off terminal

Measurement pick-off terminal, Screw connection, Mounting type: On base, Rated cross-section: 10 mm², Width: 10 mm, Colour: Beige



Article number	Article name	GTIN (EAN)	Packaging unit
<u>1121.2</u>	MAG 50 BG	4044211080914	10 ST

Inlay profile

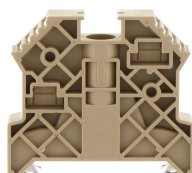
Inlay plate, Colour: natural



Article number	Article name	GTIN (EAN)	Packaging unit
<u>2274.0</u>	EP 50	4044211050818	10 ST

End stop

End stop, Mounting type: Mounting rail TS 35/7.5, Width: 9.5 mm, Colour: Beige



Article number	Article name	GTIN (EAN)	Packaging unit
<u>2828.0</u>	ES 35/K/ST BG	4044211055547	50

17156.2 SRK 50/2A BG

End stop



End stop, Mounting type: Mounting rail TS 35/7.5 and TS 35/15, Width: 8 mm, Colour: Beige

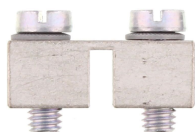
Article number	Article name	GTIN (EAN)	Packaging unit
<u>17250.2</u>	SES 35 BG	4044211178253	50

Cross-connector



Cross-connector, No. of poles: 4, Mounting type: Can be screwed on, Width: 67.8 mm, Rated cross-section: 50 mm², Colour: natural

Article number	Article name	GTIN (EAN)	Packaging unit
<u>17257.0</u>	SQ 50/4	4044211186838	10 ST



Cross-connector, No. of poles: 2, Mounting type: Can be screwed on, Width: 30.6 mm, Rated cross-section: 50 mm², Colour: natural

Article number	Article name	GTIN (EAN)	Packaging unit
<u>17255.0</u>	SQ 50/2	4044211186814	10 ST



Cross-connector, No. of poles: 3, Mounting type: Can be screwed on, Width: 49.2 mm, Rated cross-section: 50 mm², Colour: natural

Article number	Article name	GTIN (EAN)	Packaging unit
<u>17256.0</u>	SQ 50/3	4044211186821	10 ST