



Insulated cross-connector, No. of poles: 30, Mounting type: Plug in, Width: 181.1 mm, Rated cross-section: 4 mm², Colour: Yellow

RAL: 1026

Business data

| | |
|--|---------------------------|
| Article number | <u>17220.8</u> |
| Article name | SQI 4/30 YE |
| GTIN (EAN) | 4044211148737 |
| Packaging unit | 5 |
| Quantity unit | PC |
| Weight per piece (not including packaging) | 21 g |
| Weight per piece (including packaging) | 22 g |
| Unit of weight | G |
| Customs number | 85389099 |
| Country of origin | DE |
| Prio-Article | 17220.8 |
| Product description | Insulated cross-connector |

Technical data

Dimensions

| | |
|------------|----------|
| Length | 4.2 mm |
| Width | 181.1 mm |
| Height | 23 mm |
| Pitch size | 6 mm |

Ratings

| | |
|---------------------------------|-------------------|
| Voltage with partition, max. | 1000 V |
| Voltage without partition, max. | 1000 V |
| Rated current | 32 A |
| Current load, max. | 41 A |
| Rated cross-section | 4 mm ² |
| Contamination degree | 2 |

Connection data

| | |
|--------------|----|
| No. of poles | 30 |
|--------------|----|

Materials

| | |
|---------------------------|---------------|
| Material | Bronze |
| Insulation housing | Polyamide 6.6 |
| Flammability class UL 94 | V-2 |
| Working temperature, min. | -40 °C |
| Working temperature, max. | 105 °C |

Further technical data

| | |
|-------------------------------|---------|
| Mounting type | Plug in |
| Insulation available | ✓ |
| Touch protection is available | ✓ |
| Number of bridged terminals | 30 |

Environmental Product Compliance

| | |
|--------------------------------|------------------------|
| REACH Conform | yes |
| REACH Reference date | 2023-06-14, 2024-01-23 |
| REACH Candidate Substance Note | No |
| RoHS Conform | yes |

Data sheet

17220.8 SQI 4/30 YE



Media

Accessories

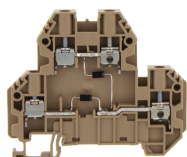
Insulation cap for cross-connector



Insulating cap, Colour: Yellow

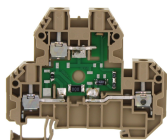
| Article number | Article name | GTIN (EAN) | Packaging unit |
|----------------|----------------|---------------|----------------|
| <u>17200.8</u> | SQIK 2,5-10 YE | 4044211148539 | 20 |

##INVERSE##CONTA-CONNECT



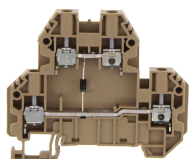
Double-level terminal with electronic components, Screw connection, Mounting type: Mounting rail TS 35/7.5, Rated cross-section: 4 mm², Width: 6.1 mm, Colour: Beige

| Article number | Article name | GTIN (EAN) | Packaging unit |
|----------------|--------------|---------------|----------------|
| <u>17566.2</u> | SRKD 4/D5 BG | 4044211234669 | 100 ST |



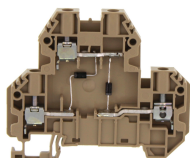
Double-level terminal with electronic components, Screw connection, Mounting type: Mounting rail TS 35/7.5, Rated cross-section: 4 mm², Width: 6.1 mm, Colour: Beige

| Article number | Article name | GTIN (EAN) | Packaging unit |
|----------------|---------------|---------------|----------------|
| <u>17569.2</u> | SRKD 4/RD5 BG | 4044211234690 | 100 ST |



Double-level terminal with electronic components, Screw connection, Mounting type: Mounting rail TS 35/7.5, Rated cross-section: 4 mm², Width: 6.1 mm, Colour: Beige

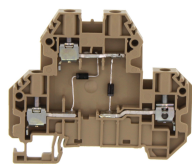
| Article number | Article name | GTIN (EAN) | Packaging unit |
|----------------|--------------|---------------|----------------|
| <u>17563.2</u> | SRKD 4/D2 BG | 4044211234638 | 100 ST |



Double-level terminal with electronic components, Screw connection, Mounting type: Mounting rail TS 35/7.5, Rated cross-section: 4 mm², Width: 6.1 mm, Colour: Beige

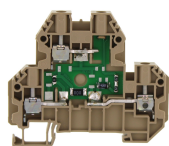
| Article number | Article name | GTIN (EAN) | Packaging unit |
|----------------|--------------|---------------|----------------|
| <u>17564.2</u> | SRKD 4/D3 BG | 4044211234645 | 100 ST |

##INVERSE##CONTA-CONNECT



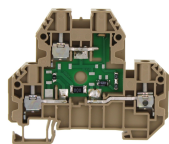
Double-level terminal with electronic components, Screw connection, Mounting type:Mounting rail TS 35/7.5, Rated cross-section: 4 mm², Width: 6.1 mm, Colour: Beige

| Article number | Article name | GTIN (EAN) | Packaging unit |
|-------------------------|--------------|---------------|----------------|
| 17565.2 | SRKD 4/D4 BG | 4044211234652 | 100 ST |



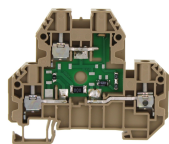
Double-level terminal with electronic components, Screw connection, Mounting type:Mounting rail TS 35/7.5, Rated cross-section: 4 mm², Width: 6.1 mm, Colour: Beige

| Article number | Article name | GTIN (EAN) | Packaging unit |
|-------------------------|---------------------------|---------------|----------------|
| 17570.2 | SRKD 4/LED1(RD)/24V DC BG | 4044211234706 | 100 ST |



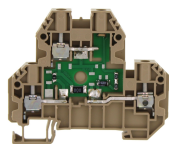
Double-level terminal with electronic components, Screw connection, Mounting type:Mounting rail TS 35/7.5, Rated cross-section: 4 mm², Width: 6.1 mm, Colour: Beige

| Article number | Article name | GTIN (EAN) | Packaging unit |
|-------------------------|---------------------------|---------------|----------------|
| 17571.2 | SRKD 4/LED1(GN)/24V DC BG | 4044211234713 | 100 ST |



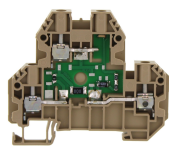
Double-level terminal with electronic components, Screw connection, Mounting type:Mounting rail TS 35/7.5, Rated cross-section: 4 mm², Width: 6.1 mm, Colour: Beige

| Article number | Article name | GTIN (EAN) | Packaging unit |
|-------------------------|---------------------------|---------------|----------------|
| 17572.2 | SRKD 4/LED2(RD)/24V DC BG | 4044211234720 | 100 ST |



Double-level terminal with electronic components, Screw connection, Mounting type:Mounting rail TS 35/7.5, Rated cross-section: 4 mm², Width: 6.1 mm, Colour: Beige

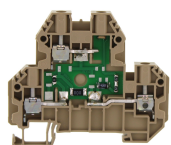
| Article number | Article name | GTIN (EAN) | Packaging unit |
|-------------------------|---------------------------|---------------|----------------|
| 17575.2 | SRKD 4/LED3(GN)/24V DC BG | 4044211234751 | 100 ST |



Double-level terminal with electronic components, Screw connection, Mounting type:Mounting rail TS 35/7.5, Rated cross-section: 4 mm², Width: 6.1 mm, Colour: Beige

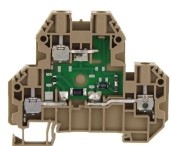
| Article number | Article name | GTIN (EAN) | Packaging unit |
|-------------------------|---------------------------|---------------|----------------|
| 17576.2 | SRKD 4/LED4(RD)/24V DC BG | 4044211234768 | 100 ST |

##INVERSE##CONTA-CONNECT



Double-level terminal with electronic components, Screw connection, Mounting type:Mounting rail TS 35/7.5, Rated cross-section: 4 mm², Width: 6.1 mm, Colour: Beige

| Article number | Article name | GTIN (EAN) | Packaging unit |
|----------------|---------------------------|---------------|----------------|
| <u>17578.2</u> | SRKD 4/LED5(RD)/24V AC BG | 4044211234782 | 100 ST |



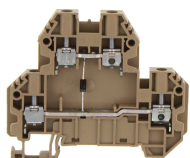
Double-level terminal with electronic components, Screw connection, Mounting type:Mounting rail TS 35/7.5, Rated cross-section: 4 mm², Width: 6.1 mm, Colour: Beige

| Article number | Article name | GTIN (EAN) | Packaging unit |
|----------------|----------------------------|---------------|----------------|
| <u>17579.2</u> | SRKD 4/LED5(RD)/230V AC BG | 4044211234799 | 100 ST |



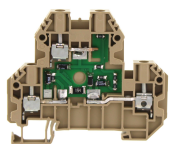
Double-level terminal with electronic components, Screw connection, Mounting type:Mounting rail TS 35/7.5, Rated cross-section: 4 mm², Width: 6.1 mm, Colour: Beige

| Article number | Article name | GTIN (EAN) | Packaging unit |
|----------------|--------------|---------------|----------------|
| <u>17561.2</u> | SRKD 4/D0 BG | 4044211234614 | 100 ST |



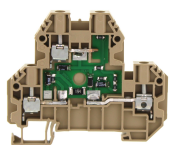
Double-level terminal with electronic components, Screw connection, Mounting type:Mounting rail TS 35/7.5, Rated cross-section: 4 mm², Width: 6.1 mm, Colour: Beige

| Article number | Article name | GTIN (EAN) | Packaging unit |
|----------------|--------------|---------------|----------------|
| <u>17562.2</u> | SRKD 4/D1 BG | 4044211234621 | 100 ST |



Double-level terminal with electronic components, Screw connection, Mounting type:Mounting rail TS 35/7.5, Rated cross-section: 4 mm², Width: 6.1 mm, Colour: Beige

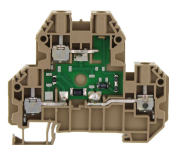
| Article number | Article name | GTIN (EAN) | Packaging unit |
|----------------|--------------|---------------|----------------|
| <u>17567.2</u> | SRKD 4/D6 BG | 4044211234676 | 100 ST |



Double-level terminal with electronic components, Screw connection, Mounting type:Mounting rail TS 35/7.5, Rated cross-section: 4 mm², Width: 6.1 mm, Colour: Beige

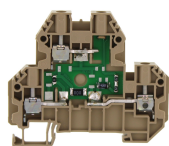
| Article number | Article name | GTIN (EAN) | Packaging unit |
|----------------|---------------|---------------|----------------|
| <u>17568.2</u> | SRKD 4/RD1 BG | 4044211234683 | 100 ST |

##INVERSE##CONTA-CONNECT



Double-level terminal with electronic components, Screw connection, Mounting type: Mounting rail TS 35/7.5, Rated cross-section: 4 mm², Width: 6.1 mm, Colour: Beige

| Article number | Article name | GTIN (EAN) | Packaging unit |
|----------------|---------------------------|---------------|----------------|
| <u>17573.2</u> | SRKD 4/LED2(GN)/24V DC BG | 4044211234737 | 100 ST |



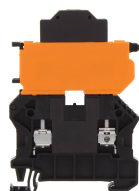
Double-level terminal with electronic components, Screw connection, Mounting type: Mounting rail TS 35/7.5, Rated cross-section: 4 mm², Width: 6.1 mm, Colour: Beige

| Article number | Article name | GTIN (EAN) | Packaging unit |
|----------------|---------------------------|---------------|----------------|
| <u>17574.2</u> | SRKD 4/LED3(RD)/24V DC BG | 4044211234744 | 100 ST |



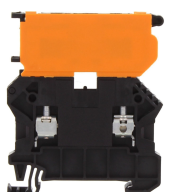
Double-level terminal with electronic components, Screw connection, Mounting type: Mounting rail TS 35/7.5, Rated cross-section: 4 mm², Width: 6.1 mm, Colour: Beige

| Article number | Article name | GTIN (EAN) | Packaging unit |
|----------------|---------------------------|---------------|----------------|
| <u>17577.2</u> | SRKD 4/LED4(GN)/24V DC BG | 4044211234775 | 100 ST |



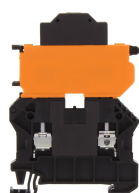
Fuse-disconnect terminal, Screw connection, Mounting type: Mounting rail TS 35/7.5, Rated cross-section: 4 mm², Width: 6.1 mm, Colour: Black

| Article number | Article name | GTIN (EAN) | Packaging unit |
|----------------|-------------------------------|---------------|----------------|
| <u>17172.4</u> | SSIK 4/2A/LED 30-60V AC/DC BK | 4044211180447 | 25 ST |



Fuse-disconnect terminal, Screw connection, Mounting type: Mounting rail TS 35/7.5, Rated cross-section: 4 mm², Width: 6.1 mm, Colour: Black

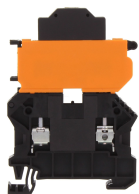
| Article number | Article name | GTIN (EAN) | Packaging unit |
|----------------|--------------|---------------|----------------|
| <u>17150.4</u> | SSIK 4/2A BK | 4044211179816 | 50 ST |



Fuse-disconnect terminal, Screw connection, Mounting type: Mounting rail TS 35/7.5, Rated cross-section: 4 mm², Width: 6.1 mm, Colour: Black

| Article number | Article name | GTIN (EAN) | Packaging unit |
|----------------|-------------------------------|---------------|----------------|
| <u>17171.4</u> | SSIK 4/2A/LED 12-30V AC/DC BK | 4044211180430 | 25 ST |

##INVERSE##CONTA-CONNECT



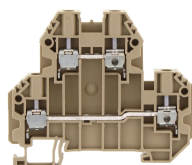
Fuse-disconnect terminal, Screw connection, Mounting type: Mounting rail TS 35/7.5, Rated cross-section: 4 mm², Width: 6.1 mm, Colour: Black

| Article number | Article name | GTIN (EAN) | Packaging unit |
|----------------|---------------------------------|---------------|----------------|
| <u>17173.4</u> | SSIK 4/2A/LED 110-250V AC/DC BK | 4044211180454 | 25 ST |



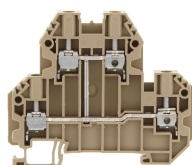
Fuse-disconnect terminal, Screw connection, Mounting type: Mounting rail TS 35/7.5, Rated cross-section: 4 mm², Width: 6.1 mm, Colour: Black

| Article number | Article name | GTIN (EAN) | Packaging unit |
|----------------|-----------------------------|---------------|----------------|
| <u>17174.4</u> | SSIK 4/2A/LED 500V AC/DC BK | 4044211180461 | 25 ST |



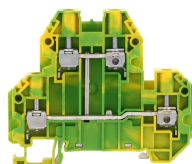
Double-level terminal, Screw connection, Mounting type: Mounting rail TS 35/7.5, Rated cross-section: 4 mm², Width: 6.1 mm, Colour: Beige

| Article number | Article name | GTIN (EAN) | Packaging unit |
|----------------|--------------|---------------|----------------|
| <u>17185.2</u> | SRKD 4 BG | 4044211190712 | 100 |



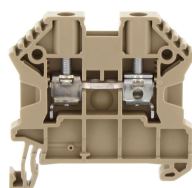
Double-level terminal, Screw connection, Mounting type: Mounting rail TS 35/7.5, Rated cross-section: 4 mm², Width: 6.1 mm, Colour: Beige

| Article number | Article name | GTIN (EAN) | Packaging unit |
|----------------|--------------|---------------|----------------|
| <u>17186.2</u> | SRKD 4/SV BG | 4044211190736 | 100 |



Protective-earth double-level terminal, Screw connection, Mounting type: Mounting rail TS 35/7.5, Rated cross-section: 4 mm², Width: 6.1 mm, Colour: Green-yellow

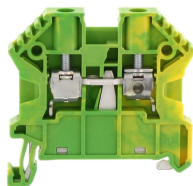
| Article number | Article name | GTIN (EAN) | Packaging unit |
|----------------|--------------|---------------|----------------|
| <u>17187.2</u> | SSLD 4 GNYE | 4044211190750 | 100 ST |



Feed-through terminal, Screw connection, Mounting type: Mounting rail TS 35/7.5, Rated cross-section: 4 mm², Width: 6 mm, Colour: Beige

| Article number | Article name | GTIN (EAN) | Packaging unit |
|----------------|---------------|---------------|----------------|
| <u>17106.2</u> | SRK 4/2A/Z BG | 4044211141714 | 100 ST |

##INVERSE##CONTA-CONNECT



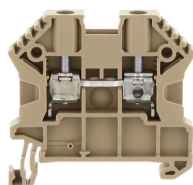
Protective earth terminal, Screw connection, Mounting type: Mounting rail TS 35/7.5, Rated cross-section: 4 mm², Width: 6 mm, Colour: Green-yellow

| Article number | Article name | GTIN (EAN) | Packaging unit |
|----------------|---------------|---------------|----------------|
| <u>17107.2</u> | SSL 4/2A GNYE | 4044211141721 | 100 ST |



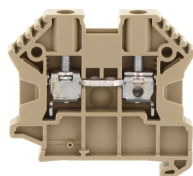
Feed-through terminal, Screw connection, Mounting type: Mounting rail TS 35/7.5, Rated cross-section: 4 mm², Width: 6 mm, Colour: Black-yellow

| Article number | Article name | GTIN (EAN) | Packaging unit |
|----------------|------------------|---------------|----------------|
| <u>17155.2</u> | SRK 4/2A/PE BKYE | 4044211186692 | 100 ST |



Feed-through terminal, Screw connection, Mounting type: Mounting rail TS 35/7.5, Rated cross-section: 4 mm², Width: 6 mm, Colour: Beige

| Article number | Article name | GTIN (EAN) | Packaging unit |
|----------------|--------------|---------------|----------------|
| <u>17104.2</u> | SRK 4/2A BG | 4044211141691 | 100 |



Feed-through terminal, Screw connection, Mounting type: Mounting rail TS 35/7.5, Rated cross-section: 4 mm², Width: 6 mm, Colour: Beige

| Article number | Article name | GTIN (EAN) | Packaging unit |
|----------------|---------------|---------------|----------------|
| <u>17105.2</u> | SRK B 4/2A BG | 4044211141707 | 100 ST |