



Insulated cross-connector, No. of poles: 2, Mounting type: Plug in, Width: 20 mm, Rated cross-section: 16 mm², Colour: Yellow

RAL: 1026

Business data

| | |
|--|---------------------------|
| Article number | 17247.8 |
| Article name | SQI 16/2 YE |
| GTIN (EAN) | 4044211181116 |
| Packaging unit | 20 |
| Quantity unit | PC |
| Weight per piece (not including packaging) | 6.5 g |
| Weight per piece (including packaging) | 6.6 g |
| Unit of weight | G |
| Customs number | 85389099 |
| Country of origin | DE |
| Product description | Insulated cross-connector |
| Colour | Yellow |

Technical data

Dimensions

| | |
|------------|---------|
| Length | 6.2 mm |
| Width | 20 mm |
| Height | 28.3 mm |
| Pitch size | 12 mm |

Ratings

| | |
|---------------------------------|--------------------|
| Voltage with partition, max. | 1000 V |
| Voltage without partition, max. | 1000 V |
| Rated current | 76 A |
| Current load, max. | 76 A |
| Rated cross-section | 16 mm ² |
| Contamination degree | 2 |

Connection data

| | |
|--------------|---|
| No. of poles | 2 |
|--------------|---|

Materials

| | |
|---------------------------|---------------|
| Material | Bronze |
| Surface | Tin-plated |
| Insulation housing | Polyamide 6.6 |
| Flammability class UL 94 | V-2 |
| Working temperature, min. | -40 °C |
| Working temperature, max. | 105 °C |

Further technical data

| | |
|-------------------------------|---------|
| Mounting type | Plug in |
| Insulation available | ✓ |
| Touch protection is available | ✓ |
| Number of bridged terminals | 2 |

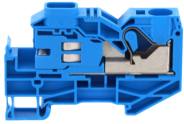
Environmental Product Compliance

| | |
|--------------------------------|------------|
| REACH Conform | yes |
| REACH Reference date | 2023-06-14 |
| REACH Candidate Substance Note | No |
| RoHS Conform | yes |

Media

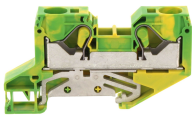
Accessories

##INVERSE##CONTA-CONNECT



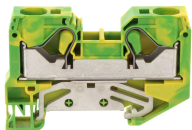
Neutral-disconnect terminal, Push-in connection, Mounting type: Mounting rail TS 35/7.5,
Rated cross-section: 16 mm², Width: 12.1 mm, Colour: Blue

| Article number | Article name | GTIN (EAN) | Packaging unit |
|----------------|--------------|---------------|----------------|
| <u>3275.5</u> | FNT 16 BU | 4044211138998 | 50 ST |



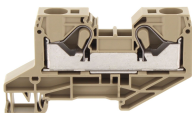
PE installation terminal, Push-in connection, Mounting type: Mounting rail TS 35/7.5,
Colour: Green-yellow

| Article number | Article name | GTIN (EAN) | Packaging unit |
|----------------|-----------------|---------------|----------------|
| <u>3281.2</u> | FSLI 16/2A GNYE | 4044211139186 | 50 ST |



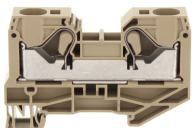
Protective earth terminal, Push-in connection, Mounting type: Mounting rail TS 35/7.5,
Colour: Green-yellow

| Article number | Article name | GTIN (EAN) | Packaging unit |
|----------------|----------------|---------------|----------------|
| <u>3299.2</u> | FSL 16/2A GNYE | 4044211199869 | 50 ST |



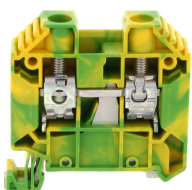
Feed-through installation terminal, Push-in connection, Mounting type: Mounting rail TS 35/7.5,
Colour: Beige

| Article number | Article name | GTIN (EAN) | Packaging unit |
|----------------|---------------|---------------|----------------|
| <u>3278.2</u> | FRKI 16/2A BG | 4044211139063 | 50 |



Feed-through terminal, Push-in connection, Mounting type: Mounting rail TS 35/7.5,
Colour: Beige

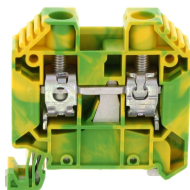
| Article number | Article name | GTIN (EAN) | Packaging unit |
|----------------|--------------|---------------|----------------|
| <u>3294.2</u> | FRK 16/2A BG | 4044211199838 | 50 |



Protective earth terminal, Screw connection, Mounting type: Mounting rail TS 35/7.5,
Rated cross-section: 16 mm², Width: 10 mm, Colour: Green-yellow

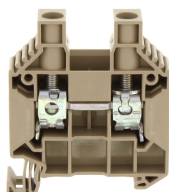
| Article number | Article name | GTIN (EAN) | Packaging unit |
|----------------|-------------------|---------------|----------------|
| <u>17131.2</u> | SSL 16/2A/IS GNYE | 4044211181079 | 50 ST |

##INVERSE##CONTA-CONNECT



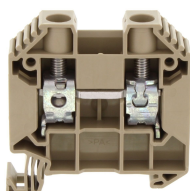
Protective earth terminal, Screw connection, Mounting type: Mounting rail TS 35/7.5, Rated cross-section: 16 mm², Width: 12.1 mm, Colour: Green-yellow

| Article number | Article name | GTIN (EAN) | Packaging unit |
|----------------|----------------|---------------|----------------|
| <u>17130.2</u> | SSL 16/2A GNYE | 4044211181062 | 50 ST |



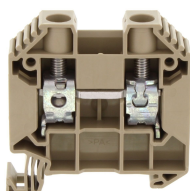
Feed-through terminal, Screw connection, Mounting type: Mounting rail TS 35/7.5, Rated cross-section: 16 mm², Width: 12.1 mm, Colour: Beige

| Article number | Article name | GTIN (EAN) | Packaging unit |
|----------------|----------------|---------------|----------------|
| <u>17134.2</u> | SRK 16/2A/H BG | 4044211206192 | 50 ST |



Feed-through terminal, Screw connection, Mounting type: Mounting rail TS 35/7.5, Rated cross-section: 16 mm², Width: 12.1 mm, Colour: Beige

| Article number | Article name | GTIN (EAN) | Packaging unit |
|----------------|--------------|---------------|----------------|
| <u>17124.2</u> | SRK 16/2A BG | 4044211180942 | 50 |



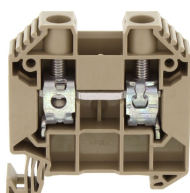
Feed-through terminal, Screw connection, Mounting type: Mounting rail TS 35/7.5, Rated cross-section: 16 mm², Width: 12.1 mm, Colour: Beige

| Article number | Article name | GTIN (EAN) | Packaging unit |
|----------------|-------------------|---------------|----------------|
| <u>17127.2</u> | SRK 16/2A/Z/IS BG | 4044211181048 | 50 ST |



Feed-through terminal, Screw connection, Mounting type: Mounting rail TS 35/7.5, Rated cross-section: 16 mm², Width: 12.1 mm, Colour: Black-yellow

| Article number | Article name | GTIN (EAN) | Packaging unit |
|----------------|-------------------|---------------|----------------|
| <u>17128.2</u> | SRK 16/2A/PE BKYE | 4044211199739 | 50 ST |



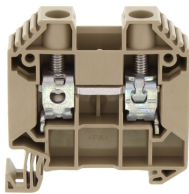
Feed-through terminal, Screw connection, Mounting type: Mounting rail TS 35/7.5, Rated cross-section: 16 mm², Width: 12.1 mm, Colour: Beige

| Article number | Article name | GTIN (EAN) | Packaging unit |
|----------------|----------------|---------------|----------------|
| <u>17125.2</u> | SRK 16/2A/Z BG | 4044211181024 | 50 ST |

Data sheet

17247.8 SQI 16/2 YE

##INVERSE##CONTA-CONNECT



Feed-through terminal, Screw connection, Mounting type: Mounting rail TS 35/7.5, Rated cross-section: 16 mm², Width: 12.1 mm, Colour: Beige

| Article number | Article name | GTIN (EAN) | Packaging unit |
|----------------|-----------------|---------------|----------------|
| <u>17126.2</u> | SRK 16/2A/IS BG | 4044211181031 | 50 |