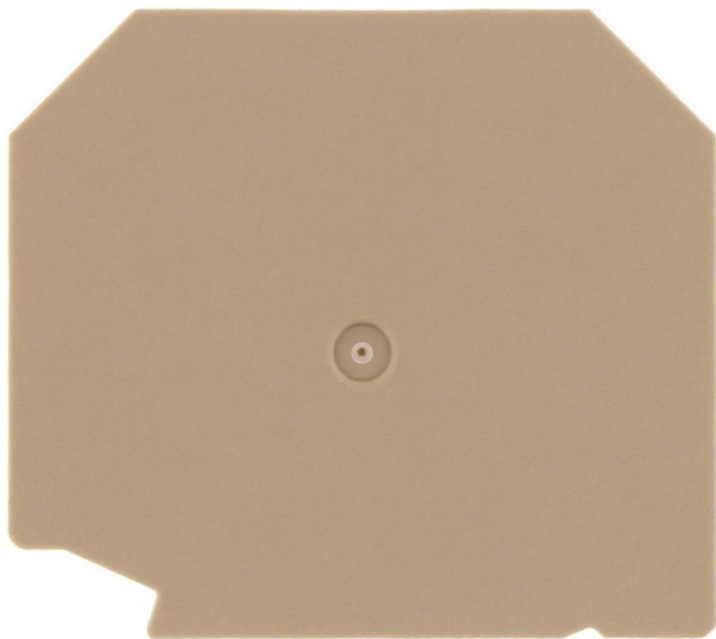


Data sheet

17254.2 SAP 16/2A BG



End plate, Width: 1.5 mm, Colour: Beige

Business data

Article number	17254.2
Article name	SAP 16/2A BG
GTIN (EAN)	4044211181109
Packaging unit	20
Quantity unit	PC
Weight per piece (not including packaging)	3.14 g
Weight per piece (including packaging)	3.2 g
Unit of weight	G
Customs number	85389099
Country of origin	DE
Prio-Article	17254.2
Product description	End plate

Data sheet

17254.2 SAP 16/2A BG



Technical data

Dimensions

Length	53 mm
Width	1.5 mm
Height	47.2 mm

Materials

Material	Polyamide 6.6
Flammability class UL 94	V-0
Working temperature, min.	-40 °C
Working temperature, max.	120 °C

Further technical data

Designed as end plate	✓
Snap-on available	✓

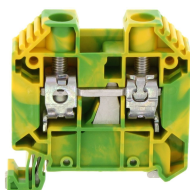
Environmental Product Compliance

REACH Conform	Yes, yes
REACH Reference date	2023-06-14
REACH Candidate Substance Note	No
RoHS Conform	yes

Media

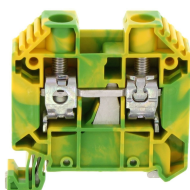
Accessories

##INVERSE##CONTA-CONNECT



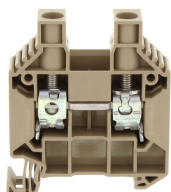
Protective earth terminal, Screw connection, Mounting type: Mounting rail TS 35/7.5, Rated cross-section: 16 mm², Width: 10 mm, Colour: Green-yellow

Article number	Article name	GTIN (EAN)	Packaging unit
<u>17131.2</u>	SSL 16/2A/IS GNYE	4044211181079	50 ST



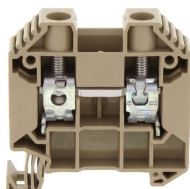
Protective earth terminal, Screw connection, Mounting type: Mounting rail TS 35/7.5, Rated cross-section: 16 mm², Width: 12.1 mm, Colour: Green-yellow

Article number	Article name	GTIN (EAN)	Packaging unit
<u>17130.2</u>	SSL 16/2A GNYE	4044211181062	50 ST



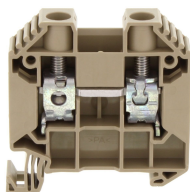
Feed-through terminal, Screw connection, Mounting type: Mounting rail TS 35/7.5, Rated cross-section: 16 mm², Width: 12.1 mm, Colour: Beige

Article number	Article name	GTIN (EAN)	Packaging unit
<u>17134.2</u>	SRK 16/2A/H BG	4044211206192	50 ST



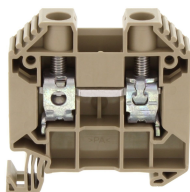
Feed-through terminal, Screw connection, Mounting type: Mounting rail TS 35/7.5, Rated cross-section: 16 mm², Width: 12.1 mm, Colour: Beige

Article number	Article name	GTIN (EAN)	Packaging unit
<u>17124.2</u>	SRK 16/2A BG	4044211180942	50



Feed-through terminal, Screw connection, Mounting type: Mounting rail TS 35/7.5, Rated cross-section: 16 mm², Width: 12.1 mm, Colour: Beige

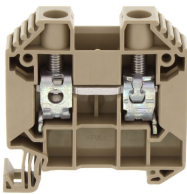
Article number	Article name	GTIN (EAN)	Packaging unit
<u>17127.2</u>	SRK 16/2A/Z/IS BG	4044211181048	50 ST



Feed-through terminal, Screw connection, Mounting type: Mounting rail TS 35/7.5, Rated cross-section: 16 mm², Width: 12.1 mm, Colour: Beige

Article number	Article name	GTIN (EAN)	Packaging unit
<u>17125.2</u>	SRK 16/2A/Z BG	4044211181024	50 ST

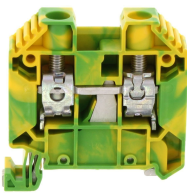
##INVERSE##CONTA-CONNECT



Feed-through terminal, Screw connection, Mounting type: Mounting rail TS 35/7.5, Rated cross-section: 16 mm², Width: 12.1 mm, Colour: Beige

Article number	Article name	GTIN (EAN)	Packaging unit
17126.2	SRK 16/2A/IS BG	4044211181031	50

##INVERSE##CONTA-CONNECT



Protective earth terminal, Screw connection, Mounting type: Mounting rail TS 35/7.5, Rated cross-section: 16 mm², Width: 10 mm, Colour: Green-yellow

Article number	Article name	GTIN (EAN)	Packaging unit
17131.2	SSL 16/2A/IS GNYE	4044211181079	50 ST