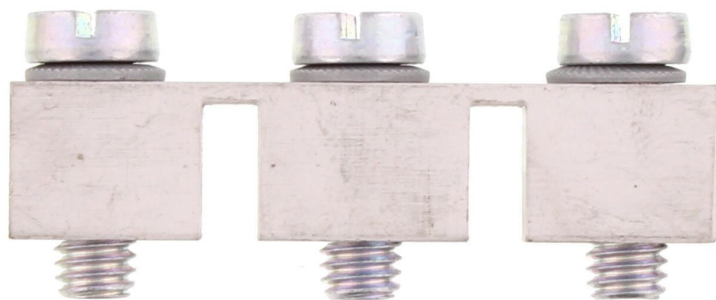


Data sheet

17256.0 SQ 50/3



Cross-connector, No. of poles: 3, Mounting type: Can be screwed on, Width: 49.2 mm, Rated cross-section: 50 mm², Colour: natural

Business data

| | |
|--|-----------------|
| Article number | <u>17256.0</u> |
| Article name | SQ 50/3 |
| GTIN (EAN) | 4044211186821 |
| Packaging unit | 10 |
| Quantity unit | PC |
| Weight per piece (not including packaging) | 47.31 g |
| Weight per piece (including packaging) | 47.41 g |
| Unit of weight | G |
| Customs number | 85389099 |
| Country of origin | DE |
| Product description | Cross-connector |
| Colour | Natural |

Technical data

Dimensions

| | |
|---------------------------------------|---------|
| Length | 10 mm |
| Width | 49.2 mm |
| Height | 20 mm |
| Hole diameter | 5.5 mm |
| Hole spacing (mid-point to mid-point) | 18.6 mm |
| Pitch size | 18.6 mm |

Ratings

| | |
|----------------------|--------------------|
| Max. voltage | 1000 V |
| Rated current | 150 A |
| Current load, max. | 192 A |
| Rated cross-section | 50 mm ² |
| Contamination degree | 3 |

Connection data

| | |
|-------------------------|---------|
| No. of poles | 3 |
| Screw head | Slotted |
| Screw threading | M 6 |
| Tightening torque, min. | 3.2 Nm |
| Tightening torque, max. | 3.7 Nm |

Materials

| | |
|---------------|------------|
| Material | Copper |
| Surface | Tin-plated |
| Surface screw | Galvanized |

Further technical data

| | |
|-----------------------------|-----------|
| Mounting type | Screwable |
| Number of bridged terminals | 3 |

Environmental Product Compliance

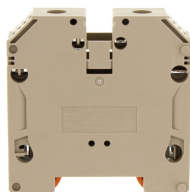
| | |
|--------------------------------|------------|
| REACH Conform | Yes |
| REACH Reference date | 2024-06-27 |
| REACH Candidate Substance Note | No |
| RoHS Conform | Yes |

Media



Accessories

##INVERSE##CONTA-CONNECT



Feed-through terminal, Screw connection, Mounting type: Mounting rail TS 35/7.5, Rated cross-section: 50 mm², Width: 18.5 mm, Colour: Beige

| Article number | Article name | GTIN (EAN) | Packaging unit |
|----------------|--------------|---------------|----------------|
| <u>17156.2</u> | SRK 50/2A BG | 4044211186715 | 10 |



Feed-through terminal, Screw connection, Mounting type: Mounting rail TS 35/7.5, Rated cross-section: 50 mm², Width: 18.5 mm, Colour: Black-yellow

| Article number | Article name | GTIN (EAN) | Packaging unit |
|----------------|-------------------|---------------|----------------|
| <u>17157.2</u> | SRK 50/2A/PE BKYE | 4044211186722 | 10 ST |