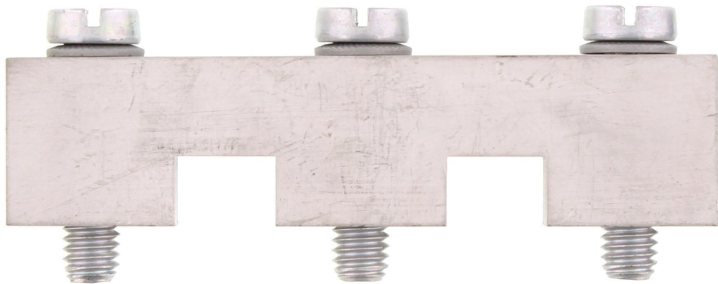


Data sheet

17279.0 SQ 120/3



Cross-connector, No. of poles: 3, Mounting type: Can be screwed on, Width: 71 mm, Rated cross-section: 120 mm², Colour: natural

Business data

Article number	17279.0
Article name	SQ 120/3
GTIN (EAN)	4044211189358
Packaging unit	10
Quantity unit	PC
Weight per piece (not including packaging)	97.88 g
Weight per piece (including packaging)	98.2 g
Unit of weight	G
Customs number	85389099
Country of origin	DE
Product description	Cross-connector
Colour	Natural

Technical data

Dimensions

Length	10 mm
Width	71 mm
Height	27.5 mm
Hole diameter	5.5 mm
Hole spacing (mid-point to mid-point)	27 mm
Pitch size	27 mm

Ratings

Max. voltage	1000 V
Rated current	269 A
Current load, max.	290 A
Rated cross-section	120 mm ²
Contamination degree	3

Connection data

No. of poles	3
Screw head	Slotted
Screw threading	M 6
Tightening torque, min.	3.2 Nm
Tightening torque, max.	3.7 Nm

Materials

Material	Copper
Surface	Tin-plated
Surface screw	Galvanized

Further technical data

Mounting type	Screwable
Number of bridged terminals	3

Environmental Product Compliance

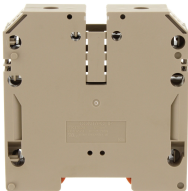
REACH Conform	yes
REACH Reference date	2023-06-14
REACH Candidate Substance Note	No
RoHS Conform	yes

Media



Accessories

##INVERSE##CONTA-CONNECT



Feed-through terminal, Screw connection, Mounting type: Mounting rail TS 35/7.5, Rated cross-section: 120 mm², Width: 27 mm, Colour: Beige

Article number	Article name	GTIN (EAN)	Packaging unit
17165.2	SRK 120/2A BG	4044211189372	5



Feed-through terminal, Screw connection, Mounting type: Mounting rail TS 35/7.5, Rated cross-section: 120 mm², Width: 27 mm, Colour: Beige

Article number	Article name	GTIN (EAN)	Packaging unit
17165.2	SRK 120/2A BG	4044211189372	5