



Feed-through terminal, Screw connection, Mounting type: Mounting rail TS 35/7.5, Rated cross-section: 35 mm², Width: 16 mm, Colour: White

RAL: 9010

Business data

| | |
|--|-----------------------|
| Article number | <u>17370.7</u> |
| Article name | RK 35/35 N WH |
| GTIN (EAN) | 4044211186203 |
| Packaging unit | 20 |
| Quantity unit | PC |
| Weight per piece (not including packaging) | 53 g |
| Weight per piece (including packaging) | 55.25 g |
| Unit of weight | G |
| Customs number | 85369010 |
| Country of origin | CZ |
| Prio-Article | 17370.2 |
| Product description | Feed-through terminal |

Technical data

Dimensions

| | |
|------------------|-------|
| Length | 58 mm |
| Width | 16 mm |
| Height TS 35/7.5 | 52 mm |

Ratings

| | |
|---|--------------------|
| Rated voltage | 800 V |
| Rated current | 125 A |
| Rated cross-section | 35 mm ² |
| Rated impulse voltage | 8 kV |
| Overvoltage category | III |
| Contamination degree | 3 |
| Maximum power dissipation for nominal condition | 4 W |

Connection data

| | |
|--|---------------------|
| Connection principle | Screw connection |
| Connection position | Lateral |
| Connections | 2 |
| Number of terminals per level | 2 |
| Number of levels | 1 |
| Wire cross-section single-core (rigid) / stranded, min. | 2.5 mm ² |
| Wire cross-section single core (rigid)/stranded, max. | 50 mm ² |
| Wire cross-section stranded, min. | 2.5 mm ² |
| Wire cross-section stranded, max. | 35 mm ² |
| Wire cross-section stranded with wire-end ferrules, min. | 2.5 mm ² |
| Wire cross-section stranded with wire-end ferrules, max. | 35 mm ² |
| Wire cross-section AWG, min. | 12 |
| Wire cross-section AWG, max. | 2 |
| Stripping length | 20 mm |
| Screw head | Slotted |
| Screw threading | M 6 |
| Tightening torque, min. | 2.5 Nm |
| Tightening torque, max. | 5 Nm |

Technical data

Materials

| | |
|---------------------------|---------------|
| Insulation housing | Polyamide 6.6 |
| Flammability class UL 94 | V-0 |
| Working temperature, min. | -40 °C |
| Working temperature, max. | 120 °C |

Further technical data

| | |
|-------------------------------------|-------------------------|
| Mounting type | Mounting rail TS 35/7,5 |
| Gauge plug acc. to EN 60 947-1 | B9 |
| Number of cross-connection channels | 1 |

Environmental Product Compliance

| | |
|--------------------------------|------------------------|
| REACH Conform | yes |
| REACH Reference date | 2023-06-14, 2024-01-23 |
| REACH Candidate Substance Note | No |
| RoHS Conform | yes |

Approvals

Standards and regulations

| | |
|--------------|----------------|
| EAC approval | TR ZU 004/2011 |
|--------------|----------------|

| | |
|----------------------|-----|
| EAC approval granted | yes |
|----------------------|-----|

CSA approval

| | |
|--------------|--------------|
| CSA approval | C22.2 No 158 |
|--------------|--------------|

| | |
|----------------------|-----|
| CSA approval granted | yes |
|----------------------|-----|

| | |
|-------------------------------|-------|
| CSA Usegroup C: rated voltage | 600 V |
|-------------------------------|-------|

| | |
|-------------------------------|-------|
| CSA Usegroup C: rated current | 115 A |
|-------------------------------|-------|

| | |
|----------------------------------|----|
| CSA wire cross-section AWG, min. | 12 |
|----------------------------------|----|

| | |
|----------------------------------|---|
| CSA wire cross-section AWG, max. | 2 |
|----------------------------------|---|

| | |
|----------------------|-------|
| CSA stripping length | 20 mm |
|----------------------|-------|

| | |
|-----------------|--------------|
| CSA File Number | 042110_0_000 |
|-----------------|--------------|

CSAus approval

| | |
|----------------|---------|
| CSAus approval | UL 1059 |
|----------------|---------|

| | |
|------------------------|-----|
| CSAus approval granted | yes |
|------------------------|-----|

| | |
|---------------------------------|-------|
| CSAus Usegroup C: rated voltage | 600 V |
|---------------------------------|-------|

| | |
|---------------------------------|-------|
| CSAus Usegroup C: rated current | 115 A |
|---------------------------------|-------|

| | |
|------------------------------------|----|
| CSAus wire cross-section AWG, min. | 12 |
|------------------------------------|----|

| | |
|------------------------------------|---|
| CSAus wire cross-section AWG, max. | 2 |
|------------------------------------|---|

| | |
|------------------------|-------|
| CSAus stripping length | 20 mm |
|------------------------|-------|

| | |
|-------------------|--------------|
| CSAus File Number | 042110_0_000 |
|-------------------|--------------|

cUL Recognized

| | |
|--------------|--------------|
| cUL approval | C22.2 No 158 |
|--------------|--------------|

| | |
|-------------------------------|-------|
| cUL Usegroup C: rated voltage | 600 V |
|-------------------------------|-------|

| | |
|-------------------------------|-------|
| cUL Usegroup C: rated current | 115 A |
|-------------------------------|-------|

| | |
|--|----|
| cUL wire cross-section single-core (rigid) AWG, min. | 12 |
|--|----|

| | |
|--|---|
| cUL wire cross-section single-core (rigid) AWG, max. | 2 |
|--|---|

| | |
|---|----|
| cUL wire cross-section stranded AWG, min. | 12 |
|---|----|

| | |
|---|---|
| cUL wire cross-section stranded AWG, max. | 2 |
|---|---|

| | |
|------------|-------|
| cUL torque | 40 Nm |
|------------|-------|

| | |
|-------------------|----|
| cUL wire material | Cu |
|-------------------|----|

| | |
|-----------------|--------|
| cUL File Number | E95701 |
|-----------------|--------|

| | |
|----------------|---|
| cUL Recognized | 1 |
|----------------|---|

Approvals

KEMA KEUR approval

| | |
|---|---------------------|
| KEMA KEUR approval | EN 60947-7-1:2009 |
| KEMA KEUR approval granted | yes |
| KEMA rated voltage | 1000 V |
| KEMA rated current | 125 A |
| KEMA rated impulse voltage | 8 kV |
| KEMA wire cross-section single core (rigid), min. | 2.5 mm ² |
| KEMA wire cross-section single-core (rigid), max. | 50 mm ² |
| KEMA wire cross-section stranded, min. | 2.5 mm ² |
| KEMA wire cross-section stranded, max. | 35 mm ² |

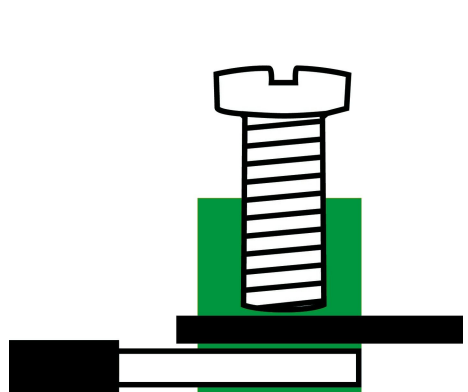
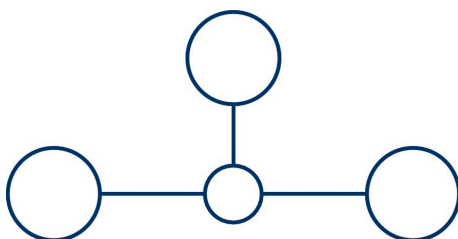
UL Recognized

| | |
|---|----------|
| UL approval | UL 1059 |
| UL Usegroup C: rated voltage | 600 V |
| UL Usegroup C: rated current | 115 A |
| UL wire cross-section single-core (rigid) AWG, min. | 12 |
| UL wire cross-section single-core (rigid) AWG, max. | 2 |
| UL wire cross-section stranded AWG, min. | 12 |
| UL wire cross-section stranded AWG, max. | 2 |
| UL torque | 40 Lb In |
| UL wire material | Cu |
| UL factory wiring | 1 |
| UL field wiring | 1 |
| UL File Number | E95701 |
| UL Recognized | 1 |

German Lloyd approval

| | |
|----------------------------|---|
| DNV GL Certificate number | TAE00002JF |
| DNV GL Location Classes | Temperature: B, Humidity: B, Vibration: A |
| DNV GL approval granted | 1 |
| DNV GL rated cross-section | 35 mm ² |
| DNV GL rated current | 125 A |
| DNV GL rated voltage | 800 V |
| DNV GL test standard | IEC 60947-7-1:2002 |

Media



Accessories

Cover



Cover, Length: 37.3 mm, Width: 16 mm, Colour: Yellow

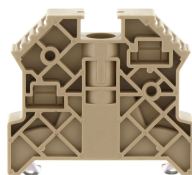
| Article number | Article name | GTIN (EAN) | Packaging unit |
|----------------|----------------|---------------|----------------|
| <u>2956.0</u> | AD 1/16/N/B YE | 4044211056841 | 20 ST |



Cover, Length: 37.3 mm, Width: 16 mm, Colour: White

| Article number | Article name | GTIN (EAN) | Packaging unit |
|----------------|--------------|---------------|----------------|
| <u>2968.0</u> | AD 1/16/N WH | 4044211056971 | 20 ST |

End stop



End stop, Mounting type: Mounting rail TS 35/7.5, Width: 9.5 mm, Colour: Beige

| Article number | Article name | GTIN (EAN) | Packaging unit |
|----------------|---------------|---------------|----------------|
| <u>2828.0</u> | ES 35/K/ST BG | 4044211055547 | 50 |

Cross-connector



Cross-connector, No. of poles: 3, Mounting type: Can be screwed on, Width: 41 mm, Rated cross-section: 35 mm², Colour: natural

| Article number | Article name | GTIN (EAN) | Packaging unit |
|----------------|--------------|---------------|----------------|
| <u>17287.0</u> | Q 3 | 4044211180331 | 20 ST |



Cross-connector, No. of poles: 10, Mounting type: Can be screwed on, Width: 153 mm, Rated cross-section: 35 mm², Colour: natural

| Article number | Article name | GTIN (EAN) | Packaging unit |
|----------------|--------------|---------------|----------------|
| <u>17289.0</u> | Q 10 | 4044211180355 | 10 ST |

Cross-connector



Cross-connector, No. of poles: 2, Mounting type: Can be screwed on, Width: 25 mm, Rated cross-section: 35 mm², Colour: natural

| Article number | Article name | GTIN (EAN) | Packaging unit |
|----------------|--------------|---------------|----------------|
| <u>17253.0</u> | Q 2 | 4044211186531 | 20 ST |



Cross-connector, No. of poles: 4, Mounting type: Can be screwed on, Width: 57 mm, Rated cross-section: 35 mm², Colour: natural

| Article number | Article name | GTIN (EAN) | Packaging unit |
|----------------|--------------|---------------|----------------|
| <u>17288.0</u> | Q 4 | 4044211180348 | 10 ST |

Screwdriver



Screwdriver with bare blade, Colour: Black-grey

| Article number | Article name | GTIN (EAN) | Packaging unit |
|----------------|--------------|---------------|----------------|
| <u>1088.0</u> | SDB 1,2x6,5 | 4044211014810 | 1 ST |