

Data sheet

1741.0 SVB 125 LG



Screw-distributor block, Screw connection, Mounting type: Mounting rail TS 35/7.5 and mounting surface, Rated cross-section of input: 16 and 35 mm², Rated cross-section of output: 16 mm², Colour: Light grey

RAL: 9018

Business data

Article number	<u>1741.0</u>
Article name	SVB 125 LG
GTIN (EAN)	4044211143480
Packaging unit	1
Quantity unit	PC
Weight per piece (not including packaging)	136.6 g
Weight per piece (including packaging)	144.6 g
Unit of weight	G
Customs number	85369010
Country of origin	FR
Product description	Screw-type distribution block
Colour	Light grey

Data sheet

1741.0 SVB 125 LG

Technical data

Dimensions

Length	75 mm
Width	27 mm
Height	47 mm
Height TS 35/7.5	50 mm

Ratings

Rated voltage AC	1000 V
Rated voltage DC	1500 V
Rated current Cu	125 A
Output: rated cross section	16 mm ²
Input A: rated cross-section	35 mm ²
Input B: rated cross-section	16 mm ²
Rated impulse voltage	2,5 kV
Overvoltage category	III
Contamination degree	3
Maximum power dissipation for nominal condition	4 W

Technical data

Connection data

Connection principle	Screw connection
Connections	8
Number of inputs A	1
Number of inputs B	1
Number of outputs	6
Input A: wire cross-section rigid, min.	10 mm ²
Input A: wire cross-section rigid, max.	35 mm ²
Input A: wire cross-section stranded, min.	10 mm ²
Input A: wire cross-section stranded, max.	35 mm ²
Input A: wire cross-section, stranded with wire-end ferrules, min.	10 mm ²
Input A: wire cross-section, stranded with wire-end ferrules, max.	35 mm ²
Input A: wire cross-section AWG, min.	8
Input A: wire cross-section AWG, max.	2
Input A: diameter	10 mm ²
Input A: stripping length	16 mm
Input A: screw head	Inner hex (Allen)
Input A: screw threading	M 8
Input A: torque, min.	3.5 Nm
Input A: torque, max.	5 Nm
Input B: wire cross-section rigid, min.	2.5 mm ²
Input B: wire cross-section rigid, max.	16 mm ²
Input B: wire cross-section stranded, min.	2.5 mm ²
Input B: wire cross-section stranded, max.	16 mm ²
Input B: wire cross-section, stranded with wire-end ferrules, min.	2.5 mm ²
Input B: wire cross-section stranded with wire-end ferrules, max.	16 mm ²
Input B: diameter	7 mm ²
Input B: stripping length	15 mm
Input B: screw head	Inner hex (Allen)
Input B: screw threading	M 6
Input B: torque, min.	3.5 Nm
Input B: torque, max.	5 Nm
Output: wire cross-section rigid, min.	2.5 mm ²
Output: wire cross-section rigid, max.	16 mm ²
Output: wire cross-section stranded, min.	2.5 mm ²
Output: wire cross-section stranded, max.	16 mm ²
Output: wire cross-section stranded, with wire-end ferrules, min.	2.5 mm ²
Output: wire cross-section stranded, with wire-end ferrules, max.	16 mm ²

Data sheet

1741.0 SVB 125 LG

Technical data

Materials

Insulation housing	Polyamide 6.6
Flammability class UL 94	V-0
Working temperature, min.	-40 °C
Working temperature, max.	120 °C

Further technical data

Mounting type	Mounting rail TS 35/7.5 and mounting surface
Short-circuit current resistance IPK (peak value)	30 kA
Short-circuit current resistance ICW over 1 s	4,2 kA
SCCR rating	100
Req. Series fuse class J	125 A

Environmental Product Compliance

REACH Conform	No
REACH Reference date	2024-01-23
REACH Candidate Substance Note	No
REACH CAS 1 Substance	LEAD
REACH CAS 1 Percent minimal	0.1 %
REACH CAS 1 Percent maximum	4 %
REACH CAS 1 Number	7439-92-1
RoHS Conform	yes
RoHS Exception rule	6c

Approvals

Standards and regulations

EAC approval	TR ZU 004/2011
EAC approval granted	yes

cUL Recognized

cUL approval	C22.2 No 158
cUL Usegroup B: rated voltage	600 V
cUL Usegroup B: rated current	115 A
cUL Usegroup C: rated voltage	600 V
cUL Usegroup C: rated current	115 A
cUL input: wire cross-section AWG, min.	8
cUL input: wire cross-section AWG, max.	2
cUL output: wire cross-section AWG, min.	14
cUL output: wire cross-section AWG, max.	4
cUL torque input	3.5 Nm
cUL torque output	2 Nm
cUL wire material	Cu
cUL Recognized	1

UL Recognized

UL approval	UL 1059
UL Usegroup B: rated voltage	600 V
UL Usegroup B: rated current	115 A
UL Usegroup C: rated voltage	600 V
UL Usegroup C: rated current	115 A
UL input: wire cross-section AWG, min.	8
UL input: wire cross-section AWG, max.	2
UL output: wire cross-section AWG, min.	14
UL output: wire cross-section AWG, max.	4
UL torque input	31 Lb In.
UL torque output	17.5 Lb In.
UL wire material	Cu
UL factory wiring	1
UL field wiring	1
UL overvoltage protection - req. Series fuse class J	125 A
UL SCCR rating	100 kA
UL Recognized	1

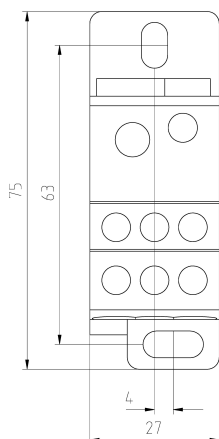
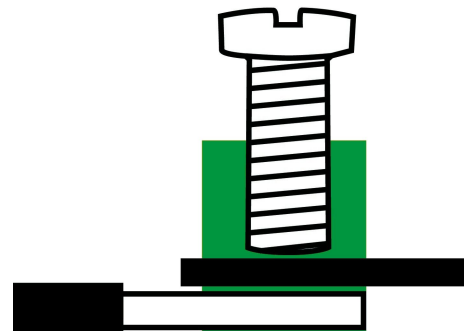
Data sheet

1741.0 SVB 125 LG

Media



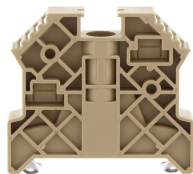
EAC



C  US

Accessories

End stop



End stop, Mounting type: Mounting rail TS 35/7.5, Width: 9.5 mm, Colour: Beige

Article number	Article name	GTIN (EAN)	Packaging unit
<u>2828.0</u>	ES 35/K/ST BG	4044211055547	50

Screwdriver

Screwdriver with bare blade, Colour:



Article number	Article name	GTIN (EAN)	Packaging unit
<u>2290.0</u>	SDK 2,0x100	4044211050887	1 ST
