

# Data sheet

## 1743.0 SVB 250 LG



Screw-distributor block, Screw connection, Mounting type: Mounting rail TS 35/7.5 and mounting surface, Rated cross-section of input: 120 mm<sup>2</sup>, Rated cross-section of output: 10, 16 and 35 mm<sup>2</sup>, Colour: Light grey

**RAL:** 9018

### Business data

|  |                               |
|--|-------------------------------|
| Article number                             | 1743.0                        |
| Article name                               | SVB 250 LG                    |
| GTIN (EAN)                                 | 4044211143503                 |
| Packaging unit                             | 1                             |
| Quantity unit                              | PC                            |
| Weight per piece (not including packaging) | 415.4 g                       |
| Weight per piece (including packaging)     | 426 g                         |
| Unit of weight                             | G                             |
| Customs number                             | 85369010                      |
| Country of origin                          | FR                            |
| Product description                        | Screw-type distribution block |
| Colour                                     | Light grey                    |

# Data sheet

## 1743.0 SVB 250 LG

---

### Technical data

---

#### Dimensions

|                  |       |
|------------------|-------|
| Length           | 96 mm |
| Width            | 44 mm |
| Height           | 50 mm |
| Height TS 35/7.5 | 53 mm |

#### Ratings

|   |                     |
|---|---------------------|
| Rated voltage AC                                | 1000 V              |
| Rated voltage DC                                | 1500 V              |
| Rated current Cu                                | 230 A               |
| Input: rated cross section                      | 120 mm <sup>2</sup> |
| Output A: rated cross-section                   | 35 mm <sup>2</sup>  |
| Output B: rated cross-section                   | 16 mm <sup>2</sup>  |
| Output C: rated cross-section                   | 10 mm <sup>2</sup>  |
| Rated impulse voltage                           | 2,5 kV              |
| Overvoltage category                            | III                 |
| Contamination degree                            | 3                   |
| Maximum power dissipation for nominal condition | 7.36 W              |

### Technical data

#### Connection data

|  |                     |
|--|---------------------|
| Connection principle   | Screw connection    |
| Connections  | 12                  |
| Number of inputs   | 1                   |
| Number of outputs A  | 2                   |
| Number of outputs B  | 5                   |
| Number of outputs C  | 4                   |
| Input: wire cross-section rigid, min.                                | 35 mm <sup>2</sup>  |
| Input: wire cross-section rigid, max.                                | 120 mm <sup>2</sup> |
| Input: wire cross-section stranded, min.                             | 35 mm <sup>2</sup>  |
| Input: wire cross-section stranded, max.                             | 95 mm <sup>2</sup>  |
| Input: wire cross-section stranded, with wire-endferrules, min.      | 35 mm <sup>2</sup>  |
| Input: wire cross-section stranded, with wire-endferrules, max.      | 95 mm <sup>2</sup>  |
| Input: wire cross-section rigid AWG, min.                            | 2                   |
| Input: wire cross-section rigid AWG, max.                            | 4/0                 |
| Input: wire cross-section stranded AWG, min.                         | 2                   |
| Input: wire cross-section stranded AWG, max.                         | 4/0                 |
| Input: wire cross-section stranded, with wire-endferrules AWG, min.  | 2                   |
| Input: wire cross-section stranded, with wire-end ferrules AWG, max. | 4/0                 |
| Input: diameter  | 15 mm               |
| Input: stripping length  | 29 mm               |
| Input: screw head  | Inner hex (Allen)   |
| Input: screw threading   | M 14                |
| Input: torque, min.  | 19 Nm               |
| Input: torque, max.  | 21 Nm               |
| Output A: wire cross-section rigid, min.                             | 6 mm <sup>2</sup>   |
| Output A: wire cross-section rigid, max.                             | 35 mm <sup>2</sup>  |
| Output A: wire cross-section stranded, min.                          | 6 mm <sup>2</sup>   |
| Output A: wire cross-section stranded, max.                          | 25 mm <sup>2</sup>  |
| Output A: wire cross-section stranded with wire-end ferrules, min.   | 6 mm <sup>2</sup>   |
| Output A: wire cross-section stranded with wire-end ferrules, max.   | 25 mm <sup>2</sup>  |
| Output A: wire cross-section AWG, min.                               | 14                  |
| Output A: wire cross-section AWG, max.                               | 2                   |
| Output A: diameter   | 9 mm <sup>2</sup>   |
| Output A: stripping length   | 12 mm               |
| Output A: screw head   | Slotted             |
| Output A: screw threading  | M 8                 |
| Output A: torque, min.   | 3.5 Nm              |

# Data sheet

## 1743.0 SVB 250 LG

### Technical data

#### Materials

|                           |               |
|---------------------------|---------------|
| Insulation housing        | Polyamide 6.6 |
| Flammability class UL 94  | V-0           |
| Working temperature, min. | -40 °C        |
| Working temperature, max. | 120 °C        |

#### Further technical data

|   |  |
|---|--|
| Mounting type                                     | Mounting rail TS 35/7.5 and mounting surface |
| Short-circuit current resistance IPK (peak value) | 51 kA  |
| Short-circuit current resistance ICW over 1 s     | 24,5 kA                                      |
| SCCR rating                                       | 100  |
| Req. Series fuse class J                          | 250 A  |

#### Environmental Product Compliance

|                                |            |
|--------------------------------|------------|
| REACH Conform                  | No         |
| REACH Reference date           | 2024-01-23 |
| REACH Candidate Substance Note | No         |
| REACH CAS 1 Substance          | LEAD       |
| REACH CAS 1 Percent minimal    | 0.1 %      |
| REACH CAS 1 Percent maximum    | 4 %        |
| REACH CAS 1 Number             | 7439-92-1  |
| RoHS Conform                   | yes        |
| RoHS Exception rule            | 6c         |

# Data sheet

## 1743.0 SVB 250 LG

### Approvals

#### Standards and regulations

|              |                |
|--------------|----------------|
| EAC approval | TR ZU 004/2011 |
|--------------|----------------|

|                      |     |
|----------------------|-----|
| EAC approval granted | yes |
|----------------------|-----|

#### UL Recognized

|             |         |
|-------------|---------|
| UL approval | UL 1059 |
|-------------|---------|

|                              |       |
|------------------------------|-------|
| UL Usegroup B: rated voltage | 600 V |
|------------------------------|-------|

|                              |       |
|------------------------------|-------|
| UL Usegroup B: rated current | 230 A |
|------------------------------|-------|

|                              |       |
|------------------------------|-------|
| UL Usegroup C: rated voltage | 600 V |
|------------------------------|-------|

|                              |       |
|------------------------------|-------|
| UL Usegroup C: rated current | 230 A |
|------------------------------|-------|

|  |   |
|--|---|
| UL input: wire cross-section AWG, min. | 2 |
|--|---|

|  |     |
|--|-----|
| UL input: wire cross-section AWG, max. | 4/0 |
|--|-----|

|   |    |
|---|----|
| UL output A: wire cross-section AWG, min. | 14 |
|---|----|

|   |   |
|---|---|
| UL output A: wire cross-section AWG, max. | 2 |
|---|---|

|   |    |
|---|----|
| UL output B: wire cross-section AWG, min. | 14 |
|---|----|

|   |   |
|---|---|
| UL output B: wire cross-section AWG, max. | 6 |
|---|---|

|   |    |
|---|----|
| UL output C: wire cross-section AWG, min. | 14 |
|---|----|

|   |   |
|---|---|
| UL output C: wire cross-section AWG, max. | 8 |
|---|---|

|                 |            |
|-----------------|------------|
| UL torque input | 170 Lb In. |
|-----------------|------------|

|                  |    |
|------------------|----|
| UL wire material | Cu |
|------------------|----|

|                   |   |
|-------------------|---|
| UL factory wiring | 1 |
|-------------------|---|

|                 |   |
|-----------------|---|
| UL field wiring | 1 |
|-----------------|---|

|  |       |
|--|-------|
| UL overvoltage protection - req. Series fuse class J | 250 A |
|--|-------|

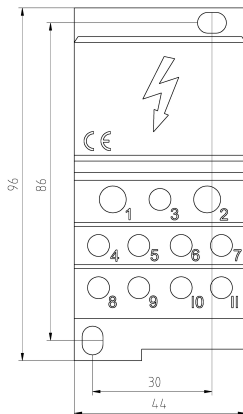
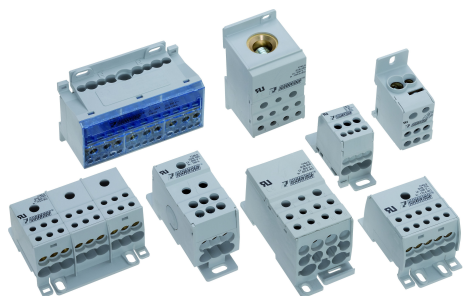
|                |        |
|----------------|--------|
| UL SCCR rating | 100 kA |
|----------------|--------|

|               |   |
|---------------|---|
| UL Recognized | 1 |
|---------------|---|

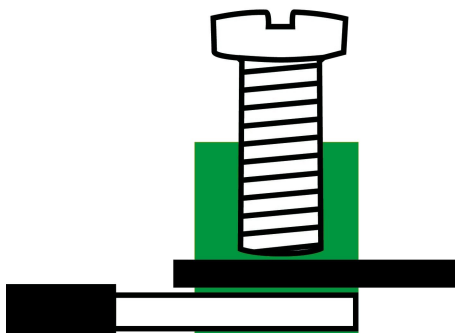
# Data sheet

## 1743.0 SVB 250 LG

### Media

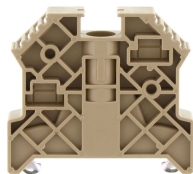


**EAC**



### Accessories

#### End stop



End stop, Mounting type: Mounting rail TS 35/7.5, Width: 9.5 mm, Colour: Beige

| Article number | Article name  | GTIN (EAN)    | Packaging unit |
|----------------|---------------|---------------|----------------|
| <u>2828.0</u>  | ES 35/K/ST BG | 4044211055547 | 50             |

#### Allen key socket wrench



Inner hex key with bare blade

| Article number | Article name | GTIN (EAN)    | Packaging unit |
|----------------|--------------|---------------|----------------|
| <u>2818.0</u>  | ISKS 5       | 4044211055448 | 1 ST           |

#### Screwdriver

Screwdriver with bare blade, Colour: Black-grey



| Article number | Article name | GTIN (EAN)    | Packaging unit |
|----------------|--------------|---------------|----------------|
| <u>1087.0</u>  | SDB 0,8x4,0  | 4044211014803 | 1 ST           |

Screwdriver with bare blade, Colour: Black-grey



| Article number | Article name | GTIN (EAN)    | Packaging unit |
|----------------|--------------|---------------|----------------|
| <u>1088.0</u>  | SDB 1,2x6,5  | 4044211014810 | 1 ST           |