

External insulated cross-connector, No. of poles: 10, Mounting type: Plug in, Width: 59.6 mm, Rated current: 27 A; Colour: Yellow

RAL: 1026

Business data

Article number	<u>2143.0</u>
Article name	AQI 10/6/17 YE
GTIN (EAN)	4044211049645
Packaging unit	10
Quantity unit	PC
Weight per piece (not including packaging)	7.13 g
Weight per piece (including packaging)	7.14 g
Unit of weight	G
Customs number	85389099
Country of origin	DE
Product description	External insulated cross-connector
Colour	Yellow

Technical data

Dimensions

Width	59.6 mm
-------	---------

Pitch size	6 mm
------------	------

Ratings

Rated current	27 A
---------------	------

Contamination degree	3
----------------------	---

Connection data

No. of poles	10
--------------	----

Materials

Material	Copper
----------	--------

Surface	Tin-plated
---------	------------

Insulation housing	Polyamide 6.6
--------------------	---------------

Flammability class UL 94	V-2
--------------------------	-----

Working temperature, min.	-40 °C
---------------------------	--------

Working temperature, max.	105 °C
---------------------------	--------

Further technical data

Mounting type	Plug in
---------------	---------

Insulation available	✓
----------------------	---

Touch protection is available	✓
-------------------------------	---

Number of bridged terminals	10
-----------------------------	----

Environmental Product Compliance

REACH Conform	Yes
---------------	-----

REACH Reference date	2024-06-27
----------------------	------------

REACH Candidate Substance Note	No
--------------------------------	----

RoHS Conform	Yes
--------------	-----

Media

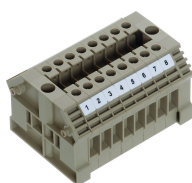
Accessories

##INVERSE##CONTA-CONNECT



10 terminal feed-through terminal/block variant, Screw connection, Mounting type: Mounting rail TS 35/7.5 and TS 32, Rated cross-section: 4 mm², Colour: Beige

Article number	Article name	GTIN (EAN)	Packaging unit
<u>1003.2</u>	KBL 2,5-4 beids. Bez-g (1-9) BG	4044211000721	10 ST



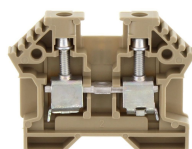
Feed-through terminal for direct mount/block variant, Screw connection, Mounting type: Mounting surface, Rated cross-section: 4 mm², Colour: Beige

Article number	Article name	GTIN (EAN)	Packaging unit
<u>1385.2</u>	KBL 2,5-4/10-D BG	4044211044268	10



10 terminal feed-through terminal/block variant, Screw connection, Mounting type: Mounting rail TS 35/7.5 and TS 32, Rated cross-section: 4 mm², Colour: Beige

Article number	Article name	GTIN (EAN)	Packaging unit
<u>1002.2</u>	KBL 2,5-4 BG	4044211000516	10 ST



Feed-through terminal for direct mount/block variant, Screw connection, Mounting type: Mounting surface, Rated cross-section: 4 mm², Width: 6 mm, Colour: Beige

Article number	Article name	GTIN (EAN)	Packaging unit
<u>1388.2</u>	KBL 2,5-4-D BG	4044211044299	100