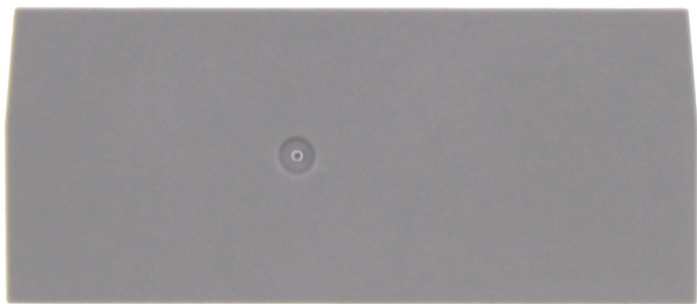


# Data sheet

## 27107.6 PAP 4/3A GR



End plate, Width: 1.5 mm, Colour: Grey

**RAL:** 7032

### Business data

Article number	27107.6
Article name	PAP 4/3A GR
GTIN (EAN)	4044211224646
Packaging unit	20
Quantity unit	PC
Weight per piece (not including packaging)	2 g
Weight per piece (including packaging)	2.2 g
Unit of weight	G
Customs number	85389099
Country of origin	DE
Prio-Article	27107.6
Product description	End plate

# Data sheet

## 27107.6 PAP 4/3A GR



### Technical data

#### Dimensions

Length	66.5 mm
Width	1.5 mm
Height	28.7 mm

#### Materials

Material	Polyamide 6.6
Flammability class UL 94	V-0
Working temperature, min.	-40 °C
Working temperature, max.	120 °C

#### Environmental Product Compliance

REACH Conform	yes
REACH Reference date	2023-06-14
REACH Candidate Substance Note	No
RoHS Conform	yes

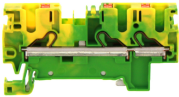
---

Media

---

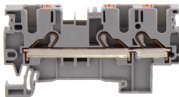
Accessories

Terminal blocks



Protective earth terminal, Push-in connection, Mounting type: Mounting rail TS 35/7.5,  
Rated cross-section: 4 mm², Width: 6.1 mm, Colour: Green-yellow

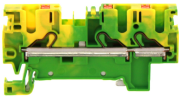
Article number	Article name	GTIN (EAN)	Packaging unit
<u>27015.2</u>	PSL 4/3A GNYE	4044211215842	50 ST



Feed-through terminal, Push-in connection, Mounting type: Mounting rail TS 35/7.5,  
Rated cross-section: 4 mm², Width: 6.1 mm, Colour: Grey

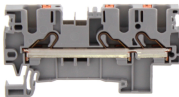
Article number	Article name	GTIN (EAN)	Packaging unit
<u>27014.6</u>	PRK 4/3A GR	4044211215835	50

##INVERSE##CONTA-CONNECT



Protective earth terminal, Push-in connection, Mounting type: Mounting rail TS 35/7.5,  
Rated cross-section: 4 mm², Width: 6.1 mm, Colour: Green-yellow

Article number	Article name	GTIN (EAN)	Packaging unit
<u>27015.2</u>	PSL 4/3A GNYE	4044211215842	50 ST



Feed-through terminal, Push-in connection, Mounting type: Mounting rail TS 35/7.5,  
Rated cross-section: 4 mm², Width: 6.1 mm, Colour: Grey

Article number	Article name	GTIN (EAN)	Packaging unit
<u>27014.6</u>	PRK 4/3A GR	4044211215835	50