

# Data sheet

## 27141.9 PQI 2,5/20 RD



Insulated cross-connector, No. of poles: 20, Mounting type: Plug in, Width: 100.9 mm, Colour: Red

### Business data

Article number	27141.9
Article name	PQI 2,5/20 RD
GTIN (EAN)	4044211225278
Packaging unit	5
Quantity unit	PC
Weight per piece (not including packaging)	17.48 g
Weight per piece (including packaging)	21.58 g
Unit of weight	G
Customs number	85389099
Country of origin	DE
Prio-Article	27141.9
Product description	Insulated cross-connector

### Technical data

#### Dimensions

Length	4 mm
Width	100.9 mm
Height	19.4 mm
Pitch size	5.1 mm

#### Ratings

Max. voltage	800 V
Rated current	24 A
Current load, max.	24 A
Rated cross-section	2.5 mm <sup>2</sup>
Contamination degree	3

#### Connection data

No. of poles	20
--------------	----

#### Materials

Insulation housing	Polyamide 6.6
Flammability class UL 94	V-0
Working temperature, min.	-40 °C
Working temperature, max.	120 °C

#### Further technical data

Mounting type	Plug in
Insulation available	✓
Touch protection is available	✓
Number of bridged terminals	20

#### Environmental Product Compliance

REACH Conform	yes
REACH Reference date	2023-06-14
REACH Candidate Substance Note	No
RoHS Conform	yes

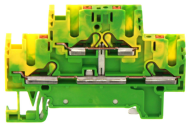
---

**Media**

---

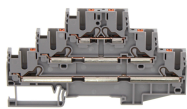
### Accessories

#### ##INVERSE##CONTA-CONNECT



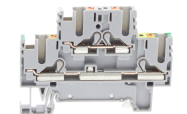
Protective-earth double-level terminal, Push-in connection, Mounting type: Mounting rail TS 35/7.5, Rated cross-section: 2.5 mm², Width: 5.1 mm, Colour: Green-yellow

Article number	Article name	GTIN (EAN)	Packaging unit
<u>27037.2</u>	PSLD 2,5 GNYE	4044211226718	50 ST



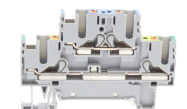
Three-level initiator terminal | Multi-wire terminal, Push-in-connection, Mounting type: Mounting rail TS 35/7.5, Rated cross-section: 2.5 mm², Width: 5,1 mm, Colour: Grey

Article number	Article name	GTIN (EAN)	Packaging unit
<u>27039.6</u>	PIKD 2,5 GR	4044211227210	50



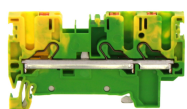
Double-level terminal, Push-in connection, Mounting type: Mounting rail TS 35/7.5, Rated cross-section: 2.5 mm², Width: 5.1 mm, Colour: Grey

Article number	Article name	GTIN (EAN)	Packaging unit
<u>27051.6</u>	PRKD 2,5/PE/L GR	4044211227159	50 ST



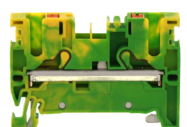
Double-level terminal, Push-in connection, Mounting type: Mounting rail TS 35/7.5, Rated cross-section: 2.5 mm², Width: 5.1 mm, Colour: Grey

Article number	Article name	GTIN (EAN)	Packaging unit
<u>27052.6</u>	PRKD 2,5/PE/N GR	4044211227166	50 ST



Protective earth terminal, Push-in connection, Mounting type: Mounting rail TS 35/7.5, Rated cross-section: 2.5 mm², Width: 5.1 mm, Colour: Green-yellow

Article number	Article name	GTIN (EAN)	Packaging unit
<u>27009.2</u>	PSL 2,5/3A GNYE	4044211223847	50 ST



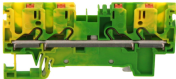
Protective earth terminal, Push-in connection, Mounting type: Mounting rail TS 35/7.5, Rated cross-section: 2.5 mm², Width: 5.1 mm, Colour: Green-yellow

Article number	Article name	GTIN (EAN)	Packaging unit
<u>27007.2</u>	PSL 2,5/2A GNYE	4044211223809	50 ST

# Data sheet

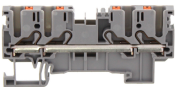
## 27141.9 PQI 2,5/20 RD

##INVERSE##CONTA-CONNECT



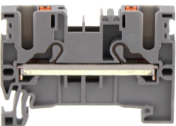
Protective earth terminal, Push-in connection, Mounting type: Mounting rail TS 35/7.5,  
Rated cross-section: 2.5 mm², Width: 5.1 mm, Colour: Green-yellow

Article number	Article name	GTIN (EAN)	Packaging unit
<u>27011.2</u>	PSL 2,5/4A GNYE	4044211223885	50 ST



Feed-through terminal, Push-in connection, Mounting type: Mounting rail TS 35/7.5,  
Rated cross-section: 2.5 mm², Width: 5.1 mm, Colour: Grey

Article number	Article name	GTIN (EAN)	Packaging unit
<u>27010.6</u>	PRK 2,5/4A GR	4044211223878	50



Feed-through terminal, Push-in connection, Mounting type: Mounting rail TS 35/7.5,  
Rated cross-section: 2.5 mm², Width: 5.1 mm, Colour: Grey

Article number	Article name	GTIN (EAN)	Packaging unit
<u>27006.6</u>	PRK 2,5/2A GR	4044211223793	50