



Seal, Mounting type: Plug in, Length x width: 20.3 mm, Max. cable diameter: 14 mm, IP 66, Colour: Black

RAL: 9005

Business data

| | |
|--|-----------------|
| Article number | <u>28533.4</u> |
| Article name | KDS-DE 13-14 BK |
| GTIN (EAN) | 4044211210991 |
| Packaging unit | 10 |
| Quantity unit | PC |
| Weight per piece (not including packaging) | 5 g |
| Weight per piece (including packaging) | 5.4 g |
| Unit of weight | G |
| Customs number | 39259020 |
| Country of origin | DE |
| Product description | Sealing Element |
| Colour | Black |

Technical data

Dimensions

| | |
|--------|---------|
| Length | 20.3 mm |
| Width | 20.3 mm |
| Height | 17.7 mm |

Materials

| | |
|---------------------------|--------|
| Material | TPE |
| Flammability class UL 94 | HB |
| Working temperature, min. | -40 °C |
| Working temperature, max. | 120 °C |
| Halogen-free | ✓ |
| Silicone-free | ✓ |
| UV-resistant | ✓ |

Further technical data

| | |
|----------------------|-----------------------------|
| Mounting type | Plug in |
| Degree of protection | IP66 |
| Strain relief | ✓ |
| Cable diameter, min. | 13 mm |
| Cable diameter, max. | 14 mm |
| NEMA Type | 1, 12, 4x (indoor use only) |
| Number of wires | 1 |

Environmental Product Compliance

| | |
|--------------------------------|------------|
| REACH Conform | yes |
| REACH Reference date | 2024-01-23 |
| REACH Candidate Substance Note | No |
| RoHS Conform | yes |

Approvals

Standards and regulations

| | |
|----------------------------|---|
| Standards / specifications | Strain relief complying with DIN EN 62444 |
|----------------------------|---|

cUL Recognized

| | |
|--------------|-----------------|
| cUL approval | C22.2 No. 14-18 |
|--------------|-----------------|

| | |
|-----------------|---------|
| cUL File Number | E489821 |
|-----------------|---------|

| | |
|----------------|---|
| cUL Recognized | 1 |
|----------------|---|

UL Recognized

| | |
|-------------|---------|
| UL approval | UL 508A |
|-------------|---------|

| | |
|----------------|---------|
| UL File Number | E489821 |
|----------------|---------|

| | |
|---------------|---|
| UL Recognized | 1 |
|---------------|---|

| | |
|----------------|-----------------------------|
| UL Type Rating | 1, 12, 4x (indoor use only) |
|----------------|-----------------------------|

German Lloyd approval

| | |
|---------------------------|------------|
| DNV GL Certificate number | TAE00003V7 |
|---------------------------|------------|

| | |
|-------------------------|--|
| DNV GL Location Classes | Temperature: -40°C to 120°C, Humidity: B, Vibration: B, Ingress protection: IP66 |
|-------------------------|--|

| | |
|-------------------------|---|
| DNV GL approval granted | 1 |
|-------------------------|---|

Media



Accessories

Inlays

Cable entry, Inlay, Mounting type: Plug in, IP 66, Colour: Black



| Article number | Article name | GTIN (EAN) | Packaging unit |
|----------------|----------------|---------------|----------------|
| <u>28516.4</u> | KDS-Inlay 1 BK | 4044211210847 | 5 ST |

Cable entry, Inlay, Mounting type: Plug in, IP 66, Colour: Black



| Article number | Article name | GTIN (EAN) | Packaging unit |
|----------------|----------------|---------------|----------------|
| <u>28517.4</u> | KDS-Inlay 2 BK | 4044211210854 | 5 ST |

Cable entry, Inlay, Mounting type: Plug in, IP 66, Colour: Black



| Article number | Article name | GTIN (EAN) | Packaging unit |
|----------------|----------------|---------------|----------------|
| <u>28518.4</u> | KDS-Inlay 4 BK | 4044211210861 | 5 ST |

Cable entry, Inlay, Mounting type: Plug in, IP 66, Colour: Black



| Article number | Article name | GTIN (EAN) | Packaging unit |
|----------------|----------------|---------------|----------------|
| <u>28519.4</u> | KDS-Inlay 6 BK | 4044211210014 | 5 ST |

Screw frame

Cable entry with foamed-in seal, Mounting type: Screws, Length: 153 mm, Width: 70 mm, IP 66, Colour: Black



| Article number | Article name | GTIN (EAN) | Packaging unit |
|----------------|-----------------|---------------|----------------|
| <u>28504.4</u> | KDS-SR 10/24 BK | 4044211210809 | 1 ST |

Cable entry with foamed-in seal, Mounting type: Screws, Length: 106 mm, Width: 70 mm, IP 66, Colour: Black



| Article number | Article name | GTIN (EAN) | Packaging unit |
|----------------|----------------|---------------|----------------|
| <u>28500.4</u> | KDS-SR 6/10 BK | 4044211210021 | 1 ST |

28533.4 KDS-DE 13-14 BK

Screw frame



Cable entry with foamed-in seal, Mounting type: Screws, Length: 126 mm, Width: 70 mm, IP 66, Colour: Black

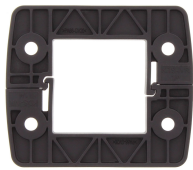
| Article number | Article name | GTIN (EAN) | Packaging unit |
|-------------------------|----------------|---------------|----------------|
| 28502.4 | KDS-SR 8/16 BK | 4044211210786 | 1 ST |



Cable entry with foamed-in seal, Mounting type: Screws, Length: 81 mm, Width: 70 mm, IP 66, Colour: Black

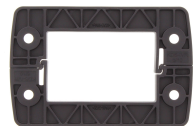
| Article number | Article name | GTIN (EAN) | Packaging unit |
|-------------------------|---------------|---------------|----------------|
| 28506.4 | KDS-SR 1-4 BK | 4044211210823 | 1 ST |

Locking frame



Inner locking frame, Length: 80 mm, Height: 11.5 mm, Colour: Black

| Article number | Article name | GTIN (EAN) | Packaging unit |
|-------------------------|----------------|---------------|----------------|
| 28507.4 | KDS-IVR 1-4 BK | 4044211210830 | 10 ST |



Inner locking frame, Length: 105 mm, Height: 11.5 mm, Colour: Black

| Article number | Article name | GTIN (EAN) | Packaging unit |
|-------------------------|-----------------|---------------|----------------|
| 28501.4 | KDS-IVR 6/10 BK | 4044211210779 | 10 ST |



Inner locking frame, Length: 125 mm, Height: 11.5 mm, Colour: Black

| Article number | Article name | GTIN (EAN) | Packaging unit |
|-------------------------|-----------------|---------------|----------------|
| 28503.4 | KDS-IVR 8/16 BK | 4044211210793 | 10 ST |



Inner locking frame, Length: 152 mm, Height: 11.5 mm, Colour: Black

| Article number | Article name | GTIN (EAN) | Packaging unit |
|-------------------------|------------------|---------------|----------------|
| 28505.4 | KDS-IVR 10/24 BK | 4044211210816 | 10 ST |

Actuating tool

28533.4 KDS-DE 13-14 BK



Using the KDS BW1 actuating tool, the seals can be conveniently mounted in and dismantled from the frame. The ergonomic grip and the special shape enable simple and precise installations, especially for cabling applications in confined spaces., Material: Polyamide

| Article number | Article name | GTIN (EAN) | Packaging unit |
|----------------|--------------|---------------|----------------|
| <u>28622.0</u> | KDS BW 1 | 4044211216597 | 1 ST |

##INVERSE##CONTA-CABLE



Split cable gland including counter nut, Thread type: metric, Material: PA 6.6, Protection: IP 66, Colour: Black

| Article number | Article name | GTIN (EAN) | Packaging unit |
|----------------|---------------|---------------|----------------|
| <u>28612.4</u> | KDS-KV M32 BK | 4044211208950 | 10 ST |



Cable entry with moulded-in seal, Mounting type: Screws, Length: 98 mm, Width: 39 mm, IP 66, Colour: Black

| Article number | Article name | GTIN (EAN) | Packaging unit |
|----------------|-----------------|---------------|----------------|
| <u>28702.4</u> | KDS-SR-FB2/B BK | 4044211225490 | 10 ST |



Cable entry flange plate with foamed-in frame gasket, Mounting type: Screw, Length: 165 mm, Width: 174 mm, IP66, Colour: Black

| Article number | Article name | GTIN (EAN) | Packaging unit |
|----------------|-------------------|---------------|----------------|
| <u>28661.4</u> | KDS-FP 3x10/24 BK | 4044211220365 | 1 ST |



Cable entry with moulded-in seal, Mounting type: Screws, Length: 147 mm, Width: 39 mm, IP 66, Colour: Black

| Article number | Article name | GTIN (EAN) | Packaging unit |
|----------------|-----------------|---------------|----------------|
| <u>28712.4</u> | KDS-SR-FB4/F BK | 4044211225599 | 10 ST |

28533.4 KDS-DE 13-14 BK

##INVERSE##CONTA-CABLE



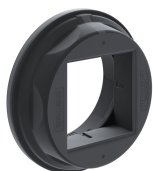
Cable entry with moulded-in seal, Mounting type: Screws, Length: 120 mm, Width: 39 mm, IP 66, Colour: Black

| Article number | Article name | GTIN (EAN) | Packaging unit |
|----------------|-----------------|---------------|----------------|
| <u>28706.4</u> | KDS-SR-FB3/D BK | 4044211225537 | 10 ST |



Cable entry with moulded-in seal, Mounting type: Screws, Length: 98 mm, Width: 39 mm, IP 66, Colour: Black

| Article number | Article name | GTIN (EAN) | Packaging unit |
|----------------|-----------------|---------------|----------------|
| <u>28702.4</u> | KDS-SR-FB2/B BK | 4044211225490 | 10 ST |



Round cable entry, Material: polyamide PA 6.6, glass-fibre reinforced | TPE, Colour: Black

| Article number | Article name | GTIN (EAN) | Packaging unit |
|----------------|----------------|---------------|----------------|
| <u>28774.4</u> | KDS-R 40-63 BK | 4044211234546 | 5 ST |



Thread and locking adapter, Material: Polyamide PA 6.6, glass-fibre reinforced, Colour: Black

| Article number | Article name | GTIN (EAN) | Packaging unit |
|----------------|----------------|---------------|----------------|
| <u>28777.4</u> | KDS-RGA M63 BK | 4044211234577 | 5 ST |



Thread and locking adapter, Material: Polyamide PA 6.6, glass-fibre reinforced, Colour: Black

| Article number | Article name | GTIN (EAN) | Packaging unit |
|----------------|----------------|---------------|----------------|
| <u>28777.4</u> | KDS-RGA M63 BK | 4044211234577 | 5 ST |

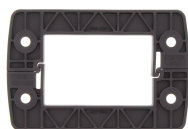


Cable entry, Inlay, Mounting type: Plug in, IP 66, Colour: Black

| Article number | Article name | GTIN (EAN) | Packaging unit |
|----------------|----------------|---------------|----------------|
| <u>28518.4</u> | KDS-Inlay 4 BK | 4044211210861 | 5 ST |

28533.4 KDS-DE 13-14 BK

##INVERSE##CONTA-CABLE



Inner locking frame, Length: 105 mm, Height: 11.5 mm, Colour: Black

| Article number | Article name | GTIN (EAN) | Packaging unit |
|-------------------------|-----------------|---------------|----------------|
| 28501.4 | KDS-IVR 6/10 BK | 4044211210779 | 10 ST |



Cable entry with foamed-in seal, Mounting type: Screws, Length: 153 mm, Width: 70 mm, IP 66, Colour: Black

| Article number | Article name | GTIN (EAN) | Packaging unit |
|-------------------------|-----------------|---------------|----------------|
| 28504.4 | KDS-SR 10/24 BK | 4044211210809 | 1 ST |



Cable entry with foamed-in seal, Mounting type: Screws, Length: 106 mm, Width: 70 mm, IP 66, Colour: Black

| Article number | Article name | GTIN (EAN) | Packaging unit |
|-------------------------|----------------|---------------|----------------|
| 28500.4 | KDS-SR 6/10 BK | 4044211210021 | 1 ST |



Cable entry with foamed-in seal, Mounting type: Screws, Length: 81 mm, Width: 70 mm, IP 66, Colour: Black

| Article number | Article name | GTIN (EAN) | Packaging unit |
|-------------------------|---------------|---------------|----------------|
| 28506.4 | KDS-SR 1-4 BK | 4044211210823 | 1 ST |



Cable entry, Inlay, Mounting type: Plug in, IP 66, Colour: Black

| Article number | Article name | GTIN (EAN) | Packaging unit |
|-------------------------|----------------|---------------|----------------|
| 28518.4 | KDS-Inlay 4 BK | 4044211210861 | 5 ST |



Cable entry set, IP66, Consisting of: 1 x KDS-SR 6/10, 1 x KDS-Inlay 2, 1 x KDS-Inlay 6

| Article number | Article name | GTIN (EAN) | Packaging unit |
|-------------------------|-----------------|---------------|----------------|
| 28603.4 | KDS-Set 6/10 BK | 4044211216191 | 1 ST |



Cable entry, Inlay, Mounting type: Plug in, IP 66, Colour: Black

| Article number | Article name | GTIN (EAN) | Packaging unit |
|-------------------------|----------------|---------------|----------------|
| 28519.4 | KDS-Inlay 6 BK | 4044211210014 | 5 ST |

28533.4 KDS-DE 13-14 BK

##INVERSE##CONTA-CABLE



Cable entry, Inlay, Mounting type: Plug in, IP 66, Colour: Black

| Article number | Article name | GTIN (EAN) | Packaging unit |
|----------------|----------------|---------------|----------------|
| <u>28519.4</u> | KDS-Inlay 6 BK | 4044211210014 | 5 ST |



Cable entry set, IP66, Consisting of: 1 x KDSI-SR 1-4 BK, 1 x KDS-Inlay 4 BK

| Article number | Article name | GTIN (EAN) | Packaging unit |
|----------------|-----------------|---------------|----------------|
| <u>28890.4</u> | KDSI-SET 1-4 BK | 4044211242152 | 1 ST |



Cable entry with foamed-in seal, Mounting type: Screws, Length: 106 mm, Width: 70 mm, IP 66, Colour: Black

| Article number | Article name | GTIN (EAN) | Packaging unit |
|----------------|----------------|---------------|----------------|
| <u>28500.4</u> | KDS-SR 6/10 BK | 4044211210021 | 1 ST |



Cable entry set, IP66, Consisting of: 1xKDSI-SR 10/24, each 1xKDS-Inlay 2,4,6

| Article number | Article name | GTIN (EAN) | Packaging unit |
|----------------|-------------------|---------------|----------------|
| <u>28893.4</u> | KDSI-SET 10/24 BK | 4044211242183 | 1 ST |



Cable entry with TPE seal, Mounting type: Screws, Length: 153 mm, Width: 64 mm, IP 66, Colour: Black

| Article number | Article name | GTIN (EAN) | Packaging unit |
|----------------|------------------|---------------|----------------|
| <u>28883.4</u> | KDSI-SR 10/24 BK | 4044211242107 | 1 ST |



Cable entry set, IP66, Consisting of: 1xKDSI-SR 10/24, each 1xKDS-Inlay 2,4,6

| Article number | Article name | GTIN (EAN) | Packaging unit |
|----------------|-------------------|---------------|----------------|
| <u>28893.4</u> | KDSI-SET 10/24 BK | 4044211242183 | 1 ST |



Cable entry with TPE seal, Mounting type: Screws, Length: 153 mm, Width: 64 mm, IP 66, Colour: Black

| Article number | Article name | GTIN (EAN) | Packaging unit |
|----------------|------------------|---------------|----------------|
| <u>28883.4</u> | KDSI-SR 10/24 BK | 4044211242107 | 1 ST |

28533.4 KDS-DE 13-14 BK

##INVERSE##CONTA-CABLE



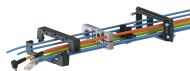
Cable entry set, IP66, Consisting of: 1xKDSI-SR 10/24, each 1xKDS-Inlay 2,4,6

| Article number | Article name | GTIN (EAN) | Packaging unit |
|----------------|-------------------|---------------|----------------|
| <u>28893.4</u> | KDSI-SET 10/24 BK | 4044211242183 | 1 ST |



Cable entry set, IP66, Consisting of: 1xKDSI-SR 10/24, each 1xKDS-Inlay 2,4,6

| Article number | Article name | GTIN (EAN) | Packaging unit |
|----------------|-------------------|---------------|----------------|
| <u>28893.4</u> | KDSI-SET 10/24 BK | 4044211242183 | 1 ST |



Cable entry with TPE seal, Mounting type: Screws, Length: 106 mm, Width: 64 mm, IP 66, Colour: Black

| Article number | Article name | GTIN (EAN) | Packaging unit |
|----------------|-----------------|---------------|----------------|
| <u>28881.4</u> | KDSI-SR 6/10 BK | 4044211242084 | 1 ST |



Cable entry set, IP66, Consisting of: 1 x KDSI-SR 1-4 BK, 1 x KDS-Inlay 4 BK

| Article number | Article name | GTIN (EAN) | Packaging unit |
|----------------|-----------------|---------------|----------------|
| <u>28890.4</u> | KDSI-SET 1-4 BK | 4044211242152 | 1 ST |



Cable entry with foamed-in seal, Mounting type: Screws, Length: 81 mm, Width: 70 mm, IP 66, Colour: Black

| Article number | Article name | GTIN (EAN) | Packaging unit |
|----------------|---------------|---------------|----------------|
| <u>28506.4</u> | KDS-SR 1-4 BK | 4044211210823 | 1 ST |



Cable entry set, IP66, Consisting of: 1xKDSI-SR 8/16, 2xKDS-Inlay 4

| Article number | Article name | GTIN (EAN) | Packaging unit |
|----------------|------------------|---------------|----------------|
| <u>28892.4</u> | KDSI-SET 8/16 BK | 4044211242176 | 1 ST |



Cable entry set, IP66, Consisting of: 1 x KDS-SR 6/10, 1 x KDS-Inlay 2, 1 x KDS-Inlay 6

| Article number | Article name | GTIN (EAN) | Packaging unit |
|----------------|-----------------|---------------|----------------|
| <u>28603.4</u> | KDS-Set 6/10 BK | 4044211216191 | 1 ST |

28533.4 KDS-DE 13-14 BK

##INVERSE##CONTA-CABLE



Cable entry set, IP66, Consisting of: 1 x KDS-SR 8/16, 1 x KDS-Inlay 1, 2 x KDS-Inlay 4

| Article number | Article name | GTIN (EAN) | Packaging unit |
|----------------|-----------------|---------------|----------------|
| <u>28604.4</u> | KDS-Set 8/16 BK | 4044211216207 | 1 ST |



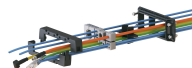
Cable entry set, IP66, Consisting of: 1xKDSI-SR 10/24, each 1xKDS-Inlay 2,4,6

| Article number | Article name | GTIN (EAN) | Packaging unit |
|----------------|-------------------|---------------|----------------|
| <u>28893.4</u> | KDSI-SET 10/24 BK | 4044211242183 | 1 ST |



Cable entry set, IP66, Consisting of: 1xKDSI-SR 10/24, each 1xKDS-Inlay 2,4,6

| Article number | Article name | GTIN (EAN) | Packaging unit |
|----------------|-------------------|---------------|----------------|
| <u>28893.4</u> | KDSI-SET 10/24 BK | 4044211242183 | 1 ST |



Cable entry with TPE seal, Mounting type: Screws, Length: 126 mm, Width: 64 mm, IP 66, Colour: Black

| Article number | Article name | GTIN (EAN) | Packaging unit |
|----------------|-----------------|---------------|----------------|
| <u>28882.4</u> | KDSI-SR 8/16 BK | 4044211242091 | 1 ST |



Cable entry with TPE seal, Mounting type: Screws, Length: 153 mm, Width: 64 mm, IP 66, Colour: Black

| Article number | Article name | GTIN (EAN) | Packaging unit |
|----------------|------------------|---------------|----------------|
| <u>28883.4</u> | KDSI-SR 10/24 BK | 4044211242107 | 1 ST |



Cable entry set, IP66, Consisting of: 1 x KDSI-SR 1-4 BK, 1 x KDS-Inlay 4 BK

| Article number | Article name | GTIN (EAN) | Packaging unit |
|----------------|-----------------|---------------|----------------|
| <u>28890.4</u> | KDSI-SET 1-4 BK | 4044211242152 | 1 ST |



Cable entry set, IP66, Consisting of: 1xKDSI-SR 6/10, 1xKDS-Inlay 2, 1xKDS-Inlay 6

| Article number | Article name | GTIN (EAN) | Packaging unit |
|----------------|------------------|---------------|----------------|
| <u>28891.4</u> | KDSI-SET 6/10 BK | 4044211242169 | 1 ST |

28533.4 KDS-DE 13-14 BK

##INVERSE##CONTA-CABLE



Cable entry set, IP66, Consisting of: 1xKDSI-SR 8/16, 2xKDS-Inlay 4

| Article number | Article name | GTIN (EAN) | Packaging unit |
|----------------|------------------|---------------|----------------|
| <u>28892.4</u> | KDSI-SET 8/16 BK | 4044211242176 | 1 ST |



Cable entry set, IP66, Consisting of: 1xKDSI-SR 10/24, each 1xKDS-Inlay 2,4,6

| Article number | Article name | GTIN (EAN) | Packaging unit |
|----------------|-------------------|---------------|----------------|
| <u>28893.4</u> | KDSI-SET 10/24 BK | 4044211242183 | 1 ST |



Cable entry with TPE seal, Mounting type: Screws, Length: 106 mm, Width: 64 mm, IP 66, Colour: Black

| Article number | Article name | GTIN (EAN) | Packaging unit |
|----------------|-----------------|---------------|----------------|
| <u>28881.4</u> | KDSI-SR 6/10 BK | 4044211242084 | 1 ST |