

28641.6

KES-GB 14/24 GR



Cable entry with membrane for unassembled cables, Mounting type: Snap-on and srew, Length: 147 mm, Width: 58 mm, IP66, Colour: Grey

RAL: Ähnlich 7035

Business data

Packaging unit	10
Quantity unit	PC
Weight per piece (not including packaging)	109.34 g
Weight per piece (including packaging)	116.34 g
Unit of weight	G
Customs number	39259020
Country of origin	DE
Prio-Article	28641.6
Product description	Cable Entry

28641.6

KES-GB 14/24 GR

Technical data

Dimensions

Length	149.6 mm
Length of wall cutout	112 mm
Width	58 mm
Width of wall cutout	36 mm
Installation height	14.5 mm

Materials

Material	Polyamide 6.6
Glass-fibre reinforced	✓
Flammability class UL 94	V-0
Working temperature, min.	-40 °C
Working temperature, max.	90 °C
Sealing material	TPE
Halogen-free	✓
Silicone-free	✓

Further technical data

Mounting type	Snap-on and screw-on
Degree of protection	IP66
Sheet thickness min.	1.5 mm
Sheet thickness max.	2 mm
NEMA Type	4x
Number of screw holes	4
Fixing screws	M4 (ISO 4762 / DIN 912)
Torque of the fixing screws	3 Nm
Number of wires	14
Number of cables for cable diameters 3.2 - 6.3 mm	5
Number of cables for cable diameters 4.0 - 7.5 mm	3
Number of cables for cable diameters 5.5 - 10.5 mm	3
Number of cables for cable diameters 8.0 - 12.5 mm	1
Number of cables for cable diameters 12.0 - 16.2 mm	3

Data sheet



28641.6

KES-GB 14/24 GR

Technical data

Print

Colour	Grey
--------	------

Environmental Product Compliance

REACH Conform	yes
---------------	-----

REACH Reference date	2021-07-08
----------------------	------------

REACH Candidate Substance Note	No
--------------------------------	----

RoHS Conform	yes
--------------	-----

28641.6

KES-GB 14/24 GR

Approvals

cUL Recognized

cUL approval	C22.2 No. 14-18
cUL Recognized	yes

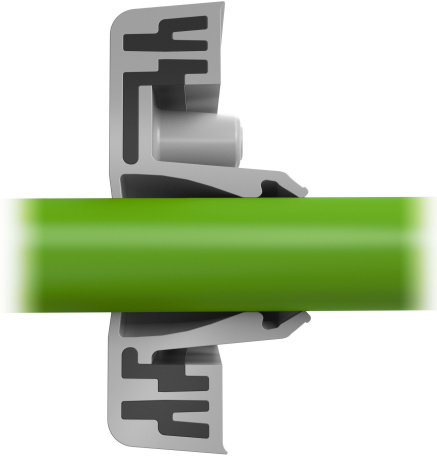
UL Recognized

UL approval	UL 508A
UL Recognized	yes

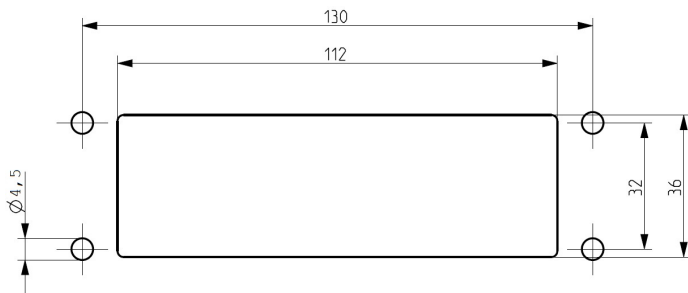
28641.6

KES-GB 14/24 GR

Media



CRA[®] US



28641.6

KES-GB 14/24 GR

Accessories

EMC brackets



Shield-connection rail enabling mounting of shield connection clips directly on cable entry system KDS and KES, Mounting type: Screw, Length: 35,3 mm, Width: 140 mm, Height: 16 mm, Profile: 10x3 mm

detail.dataSheet.generalOrderData

Product number:	detail.dataSheet.productName	GTIN (EAN)	detail.dataSheet.
28626.0	KDS-EMV-SAB 10/24	4044211219659	500 ST

28641.6

KES-GB 14/24 GR

Accessories

Sheet-metal puncher



Sheet metal puncher for rectangular openings, Dimensions opening: 112 x 36 mm, Maximum wall thickness: 2.0 mm for stainless steel sheet, Material: steel

detail.dataSheet.generalOrderData

Product number:	detail.dataSheet.productName	GTIN (EAN)	detail.dataSheet
28752.0	BL-VA KES	4044211221935	500 ST



Sheet metal puncher for rectangular openings, Dimensions opening: 112 x 36 mm, Maximum wall thickness: 2.0 mm for S 235 sheet, Material: steel

detail.dataSheet.generalOrderData

Product number:	detail.dataSheet.productName	GTIN (EAN)	detail.dataSheet
28744.0	BL KES	4044211221942	500 ST