

28644.6 KES-GB 17/24 GR



Cable entry with membrane for unassembled cables, Mounting type: Snap-on and screw, Length: 147 mm, Width: 58 mm, IP66, Colour: Grey

RAL: Ähnlich 7035

Business data

| | |
|--|-----------------|
| Article number | <u>28644.6</u> |
| Article name | KES-GB 17/24 GR |
| GTIN (EAN) | 4044211220129 |
| Packaging unit | 10 |
| Quantity unit | PC |
| Weight per piece (not including packaging) | 114.24 g |
| Weight per piece (including packaging) | 121.24 g |
| Unit of weight | G |
| Customs number | 39259020 |
| Country of origin | DE |
| Prio-Article | 28644.6 |
| Product description | Cable Entry |

Technical data

Dimensions

| | |
|-----------------------|----------|
| Length | 149.6 mm |
| Length of wall cutout | 112 mm |
| Width | 58 mm |
| Width of wall cutout | 36 mm |
| Installation height | 14.5 mm |

Materials

| | |
|---------------------------|---------------|
| Material | Polyamide 6.6 |
| Glass-fibre reinforced | ✓ |
| Flammability class UL 94 | V-0 |
| Working temperature, min. | -40 °C |
| Working temperature, max. | 90 °C |
| Sealing material | TPE |
| Halogen-free | ✓ |
| Silicone-free | ✓ |

Further technical data

| | |
|--|-----------------------------|
| Mounting type | Snap-on and screw-on |
| Degree of protection | IP66 |
| Sheet thickness min. | 1.5 mm |
| Sheet thickness max. | 2 mm |
| NEMA Type | 1, 12, 4x (indoor use only) |
| Number of screw holes | 4 |
| Fixing screws | M4 (ISO 4762 / DIN 912) |
| Torque of the fixing screws | 3 Nm |
| Number of wires | 17 |
| Number of cables for cable diameters 3.2 - 6.3 mm | 4 |
| Number of cables for cable diameters 4.0 - 7.5 mm | 2 |
| Number of cables for cable diameters 5.5 - 10.5 mm | 1 |
| Number of cables for cable diameters 8.0 - 12.5 mm | 10 |

Environmental Product Compliance

| | |
|--------------------------------|------------|
| REACH Conform | yes |
| REACH Reference date | 2024-01-23 |
| REACH Candidate Substance Note | No |
| RoHS Conform | yes |

Approvals

cUL Recognized

| | |
|--------------|-----------------|
| cUL approval | C22.2 No. 14-18 |
|--------------|-----------------|

| | |
|-----------------|---------|
| cUL File Number | E489821 |
|-----------------|---------|

| | |
|----------------|---|
| cUL Recognized | 1 |
|----------------|---|

UL Recognized

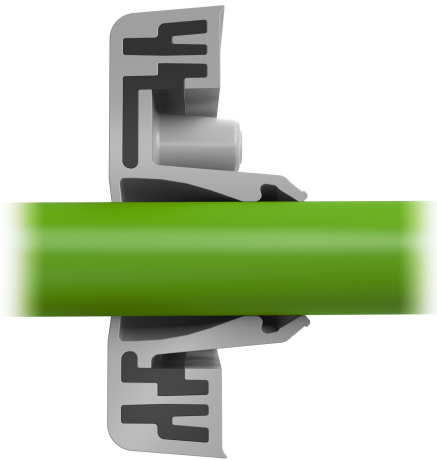
| | |
|-------------|---------|
| UL approval | UL 508A |
|-------------|---------|

| | |
|----------------|---------|
| UL File Number | E489821 |
|----------------|---------|

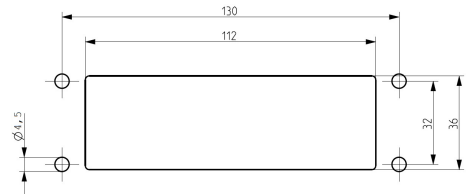
| | |
|---------------|---|
| UL Recognized | 1 |
|---------------|---|

| | |
|----------------|-----------------------------|
| UL Type Rating | 1, 12, 4x (indoor use only) |
|----------------|-----------------------------|

Media



C **RU**[®] **US**



Accessories

EMC brackets



Shield-connection rail enabling mounting of shield connection clips directly on cable entry system KDS and KES, Mounting type: Screw, Length: 35,3 mm, Width: 140 mm, Height: 16 mm, Profile: 10x3 mm

| Article number | Article name | GTIN (EAN) | Packaging unit |
|----------------|-------------------|---------------|----------------|
| <u>28626.0</u> | KDS-EMV-SAB 10/24 | 4044211219659 | 1 ST |

Sheet-metal puncher



Sheet metal puncher for rectangular openings, Dimensions opening: 112 x 36 mm, Maximum wall thickness: 2.0 mm for stainless steel sheet, Material: steel

| Article number | Article name | GTIN (EAN) | Packaging unit |
|----------------|--------------|---------------|----------------|
| <u>28752.0</u> | BL-VA KES | 4044211221935 | 1 ST |



Sheet metal puncher for rectangular openings, Dimensions opening: 112 x 36 mm, Maximum wall thickness: 2.0 mm for S 235 sheet, Material: steel

| Article number | Article name | GTIN (EAN) | Packaging unit |
|----------------|--------------|---------------|----------------|
| <u>28744.0</u> | BL KES | 4044211221942 | 1 ST |