



Seal, Mounting type: Plug in, Length x width: 20.3 mm, Max. cable diameter: 16 mm, IP 66, Colour: Black

RAL: 9005

Business data

Article number	<u>28670.4</u>
Article name	KDS-DE 15-16 BK
GTIN (EAN)	4044211219321
Packaging unit	10
Quantity unit	PC
Weight per piece (not including packaging)	3.4 g
Weight per piece (including packaging)	3.9 g
Unit of weight	G
Customs number	39259020
Country of origin	DE
Product description	Sealing Element
Colour	Black

Technical data

Dimensions

Length	20.3 mm
Width	20.3 mm
Height	17.7 mm

Materials

Material	TPE
Flammability class UL 94	HB
Working temperature, min.	-40 °C
Working temperature, max.	120 °C
Halogen-free	✓
Silicone-free	✓
UV-resistant	✓

Further technical data

Mounting type	Plug in
Degree of protection	IP66
Strain relief	✓
Cable diameter, min.	15 mm
Cable diameter, max.	16 mm
NEMA Type	1, 12, 4x (indoor use only)
Number of wires	1

Environmental Product Compliance

REACH Conform	yes
REACH Reference date	2024-01-23
REACH Candidate Substance Note	No
RoHS Conform	yes

Approvals

Standards and regulations

Standards / specifications	Strain relief complying with DIN EN 62444
----------------------------	---

cUL Recognized

cUL approval	C22.2 No. 14-18
--------------	-----------------

cUL File Number	E489821
-----------------	---------

cUL Recognized	1
----------------	---

UL Recognized

UL approval	UL 508A
-------------	---------

UL File Number	E489821
----------------	---------

UL Recognized	1
---------------	---

UL Type Rating	1, 12, 4x (indoor use only)
----------------	-----------------------------

German Lloyd approval

DNV GL Certificate number	TAE00003V7
---------------------------	------------

DNV GL Location Classes	Temperature: -40°C to 120°C, Humidity: B, Vibration: B, Ingress protection: IP66
-------------------------	--

DNV GL approval granted	1
-------------------------	---

Media



Accessories

Inlays

Cable entry, Inlay, Mounting type: Plug in, IP 66, Colour: Black



Article number	Article name	GTIN (EAN)	Packaging unit
<u>28516.4</u>	KDS-Inlay 1 BK	4044211210847	5 ST

Cable entry, Inlay, Mounting type: Plug in, IP 66, Colour: Black



Article number	Article name	GTIN (EAN)	Packaging unit
<u>28517.4</u>	KDS-Inlay 2 BK	4044211210854	5 ST

Cable entry, Inlay, Mounting type: Plug in, IP 66, Colour: Black



Article number	Article name	GTIN (EAN)	Packaging unit
<u>28518.4</u>	KDS-Inlay 4 BK	4044211210861	5 ST

Cable entry, Inlay, Mounting type: Plug in, IP 66, Colour: Black



Article number	Article name	GTIN (EAN)	Packaging unit
<u>28519.4</u>	KDS-Inlay 6 BK	4044211210014	5 ST

Screw frame

Cable entry with foamed-in seal, Mounting type: Screws, Length: 153 mm, Width: 70 mm, IP 66, Colour: Black



Article number	Article name	GTIN (EAN)	Packaging unit
<u>28504.4</u>	KDS-SR 10/24 BK	4044211210809	1 ST

Cable entry with foamed-in seal, Mounting type: Screws, Length: 106 mm, Width: 70 mm, IP 66, Colour: Black



Article number	Article name	GTIN (EAN)	Packaging unit
<u>28500.4</u>	KDS-SR 6/10 BK	4044211210021	1 ST

28670.4 KDS-DE 15-16 BK

Screw frame



Cable entry with foamed-in seal, Mounting type: Screws, Length: 126 mm, Width: 70 mm, IP 66, Colour: Black

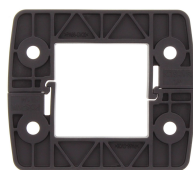
Article number	Article name	GTIN (EAN)	Packaging unit
28502.4	KDS-SR 8/16 BK	4044211210786	1 ST



Cable entry with foamed-in seal, Mounting type: Screws, Length: 81 mm, Width: 70 mm, IP 66, Colour: Black

Article number	Article name	GTIN (EAN)	Packaging unit
28506.4	KDS-SR 1-4 BK	4044211210823	1 ST

Locking frame



Inner locking frame, Length: 80 mm, Height: 11.5 mm, Colour: Black

Article number	Article name	GTIN (EAN)	Packaging unit
28507.4	KDS-IVR 1-4 BK	4044211210830	10 ST



Inner locking frame, Length: 105 mm, Height: 11.5 mm, Colour: Black

Article number	Article name	GTIN (EAN)	Packaging unit
28501.4	KDS-IVR 6/10 BK	4044211210779	10 ST



Inner locking frame, Length: 125 mm, Height: 11.5 mm, Colour: Black

Article number	Article name	GTIN (EAN)	Packaging unit
28503.4	KDS-IVR 8/16 BK	4044211210793	10 ST



Inner locking frame, Length: 152 mm, Height: 11.5 mm, Colour: Black

Article number	Article name	GTIN (EAN)	Packaging unit
28505.4	KDS-IVR 10/24 BK	4044211210816	10 ST

Actuating tool

28670.4 KDS-DE 15-16 BK



Using the KDS BW1 actuating tool, the seals can be conveniently mounted in and dismantled from the frame. The ergonomic grip and the special shape enable simple and precise installations, especially for cabling applications in confined spaces., Material: Polyamide

Article number	Article name	GTIN (EAN)	Packaging unit
<u>28622.0</u>	KDS BW 1	4044211216597	1 ST

##INVERSE##CONTA-CABLE



Split cable gland including counter nut, Thread type: metric, Material: PA 6.6, Protection: IP 66, Colour: Black

Article number	Article name	GTIN (EAN)	Packaging unit
<u>28610.4</u>	KDS-KV M20 BK	4044211208936	10 ST



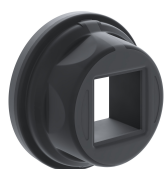
Cable entry with moulded-in seal, Mounting type: Screws, Length: 98 mm, Width: 39 mm, IP 66, Colour: Black

Article number	Article name	GTIN (EAN)	Packaging unit
<u>28702.4</u>	KDS-SR-FB2/B BK	4044211225490	10 ST



Cable entry flange plate with foamed-in frame gasket, Mounting type: Screw, Length: 165 mm, Width: 123 mm, IP66, Colour: Black

Article number	Article name	GTIN (EAN)	Packaging unit
<u>28660.4</u>	KDS-FP 2x10/24 BK	4044211220358	1 ST



Round cable entry, Material: polyamide PA 6.6, glass-fibre reinforced | TPE, Colour: Black

Article number	Article name	GTIN (EAN)	Packaging unit
<u>28770.4</u>	KDS-R 20-32 BK	4044211234508	5 ST

28670.4 KDS-DE 15-16 BK

##INVERSE##CONTA-CABLE

Cable entry with moulded-in seal, Mounting type: Screws, Length: 120 mm, Width: 39 mm, IP 66, Colour: Black



Article number	Article name	GTIN (EAN)	Packaging unit
<u>28704.4</u>	KDS-SR-FB3/B BK	4044211225513	10 ST

Cable entry with moulded-in seal, Mounting type: Screws, Length: 120 mm, Width: 39 mm, IP 66, Colour: Black



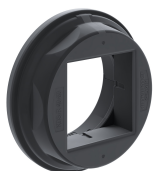
Article number	Article name	GTIN (EAN)	Packaging unit
<u>28706.4</u>	KDS-SR-FB3/D BK	4044211225537	10 ST

Cable entry with moulded-in seal, Mounting type: Screws, Length: 120 mm, Width: 39 mm, IP 66, Colour: Black



Article number	Article name	GTIN (EAN)	Packaging unit
<u>28704.4</u>	KDS-SR-FB3/B BK	4044211225513	10 ST

Round cable entry, Material: polyamide PA 6.6, glass-fibre reinforced | TPE, Colour: Black



Article number	Article name	GTIN (EAN)	Packaging unit
<u>28774.4</u>	KDS-R 40-63 BK	4044211234546	5 ST

Cable entry with moulded-in seal, Mounting type: Screws, Length: 147 mm, Width: 39 mm, IP 66, Colour: Black



Article number	Article name	GTIN (EAN)	Packaging unit
<u>28709.4</u>	KDS-SR-FB4/C BK	4044211225568	10 ST

Cable entry with moulded-in seal, Mounting type: Screws, Length: 147 mm, Width: 39 mm, IP 66, Colour: Black



Article number	Article name	GTIN (EAN)	Packaging unit
<u>28709.4</u>	KDS-SR-FB4/C BK	4044211225568	10 ST

28670.4 KDS-DE 15-16 BK

##INVERSE##CONTA-CABLE



Cable entry with TPE seal, Mounting type: Screws, Length: 81 mm, Width: 64 mm, IP 66, Colour: Black

Article number	Article name	GTIN (EAN)	Packaging unit
<u>28880.4</u>	KDSI-SR 1-4 BK	4044211243807	1 ST



Cable entry with foamed-in seal, Mounting type: Screws, Length: 106 mm, Width: 70 mm, IP 66, Colour: Black

Article number	Article name	GTIN (EAN)	Packaging unit
<u>28500.4</u>	KDS-SR 6/10 BK	4044211210021	1 ST



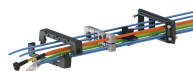
Cable entry with foamed-in seal, Mounting type: Screws, Length: 81 mm, Width: 70 mm, IP 66, Colour: Black

Article number	Article name	GTIN (EAN)	Packaging unit
<u>28506.4</u>	KDS-SR 1-4 BK	4044211210823	1 ST



Cable entry set, IP66, Consisting of: 1xKDSI-SR 6/10, 1xKDS-Inlay 2, 1xKDS-Inlay 6

Article number	Article name	GTIN (EAN)	Packaging unit
<u>28891.4</u>	KDSI-SET 6/10 BK	4044211242169	1 ST



Cable entry with TPE seal, Mounting type: Screws, Length: 81 mm, Width: 64 mm, IP 66, Colour: Black

Article number	Article name	GTIN (EAN)	Packaging unit
<u>28880.4</u>	KDSI-SR 1-4 BK	4044211243807	1 ST



Cable entry set, IP66, Consisting of: 1 x KDS-SR 10/24, 1 each of KDS-Inlay 2,4,6

Article number	Article name	GTIN (EAN)	Packaging unit
<u>28605.4</u>	KDS-Set 10/24 BK	4044211216214	1 ST

28670.4 KDS-DE 15-16 BK

##INVERSE##CONTA-CABLE



Cable entry with TPE seal, Mounting type: Screws, Length: 153 mm, Width: 64 mm, IP66, Colour: Black

Article number	Article name	GTIN (EAN)	Packaging unit
28883.4	KDSI-SR 10/24 BK	4044211242107	1 ST



Cable entry set, IP66, Consisting of: 1 x KDS-SR 6/10, 1 x KDS-Inlay 2, 1 x KDS-Inlay 6

Article number	Article name	GTIN (EAN)	Packaging unit
28603.4	KDS-Set 6/10 BK	4044211216191	1 ST



Cable entry with foamed-in seal, Mounting type: Screws, Length: 106 mm, Width: 70 mm, IP 66, Colour: Black

Article number	Article name	GTIN (EAN)	Packaging unit
28500.4	KDS-SR 6/10 BK	4044211210021	1 ST



Cable entry with foamed-in seal, Mounting type: Screws, Length: 126 mm, Width: 70 mm, IP 66, Colour: Black

Article number	Article name	GTIN (EAN)	Packaging unit
28502.4	KDS-SR 8/16 BK	4044211210786	1 ST



Cable entry set, IP66, Consisting of: 1xKDSI-SR 10/24, each 1xKDS-Inlay 2,4,6

Article number	Article name	GTIN (EAN)	Packaging unit
28893.4	KDSI-SET 10/24 BK	4044211242183	1 ST



Cable entry set, IP66, Consisting of: 1 x KDS-SR 1-4 BK, 1 x KDS-Inlay 4 BK

Article number	Article name	GTIN (EAN)	Packaging unit
28602.4	KDS-Set 1-4 BK	4044211216184	1 ST



Cable entry set, IP66, Consisting of: 1xKDSI-SR 6/10, 1xKDS-Inlay 2, 1xKDS-Inlay 6

Article number	Article name	GTIN (EAN)	Packaging unit
28891.4	KDSI-SET 6/10 BK	4044211242169	1 ST

28670.4 KDS-DE 15-16 BK

##INVERSE##CONTA-CABLE



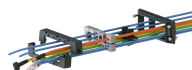
Cable entry set, IP66, Consisting of: 1 x KDS-SR 8/16, 1 x KDS-Inlay 1, 2 x KDS-Inlay 4

Article number	Article name	GTIN (EAN)	Packaging unit
<u>28604.4</u>	KDS-Set 8/16 BK	4044211216207	1 ST



Cable entry set, IP66, Consisting of: 1xKDSI-SR 10/24, each 1xKDS-Inlay 2,4,6

Article number	Article name	GTIN (EAN)	Packaging unit
<u>28893.4</u>	KDSI-SET 10/24 BK	4044211242183	1 ST



Cable entry with TPE seal, Mounting type: Screws, Length: 106 mm, Width: 64 mm, IP 66, Colour: Black

Article number	Article name	GTIN (EAN)	Packaging unit
<u>28881.4</u>	KDSI-SR 6/10 BK	4044211242084	1 ST



Cable entry with TPE seal, Mounting type: Screws, Length: 106 mm, Width: 64 mm, IP 66, Colour: Black

Article number	Article name	GTIN (EAN)	Packaging unit
<u>28881.4</u>	KDSI-SR 6/10 BK	4044211242084	1 ST



Cable entry with TPE seal, Mounting type: Screws, Length: 153 mm, Width: 64 mm, IP 66, Colour: Black

Article number	Article name	GTIN (EAN)	Packaging unit
<u>28883.4</u>	KDSI-SR 10/24 BK	4044211242107	1 ST



Cable entry set, IP66, Consisting of: 1 x KDSI-SR 1-4 BK, 1 x KDS-Inlay 4 BK

Article number	Article name	GTIN (EAN)	Packaging unit
<u>28890.4</u>	KDSI-SET 1-4 BK	4044211242152	1 ST



Cable entry set, IP66, Consisting of: 1xKDSI-SR 6/10, 1xKDS-Inlay 2, 1xKDS-Inlay 6

Article number	Article name	GTIN (EAN)	Packaging unit
<u>28891.4</u>	KDSI-SET 6/10 BK	4044211242169	1 ST

##INVERSE##CONTA-CABLE



Cable entry set, IP66, Consisting of: 1xKDSI-SR 8/16, 2xKDS-Inlay 4

Article number	Article name	GTIN (EAN)	Packaging unit
<u>28892.4</u>	KDSI-SET 8/16 BK	4044211242176	1 ST



Cable entry set, IP66, Consisting of: 1xKDSI-SR 10/24, each 1xKDS-Inlay 2,4,6

Article number	Article name	GTIN (EAN)	Packaging unit
<u>28893.4</u>	KDSI-SET 10/24 BK	4044211242183	1 ST



Cable entry with TPE seal, Mounting type: Screws, Length: 106 mm, Width: 64 mm, IP 66, Colour: Black

Article number	Article name	GTIN (EAN)	Packaging unit
<u>28881.4</u>	KDSI-SR 6/10 BK	4044211242084	1 ST