



Seal, Mounting type: Plug in, Length 42.7 mm, Width: 20.3 mm, IP 66, Colour: Grey

RAL: Ähnlich 7035

Business data

| | |
|--|-----------------|
| Article number | <u>28716.6</u> |
| Article name | KDS-DE-FB1/D GR |
| GTIN (EAN) | 4044211221096 |
| Packaging unit | 5 |
| Quantity unit | PC |
| Weight per piece (not including packaging) | 11 g |
| Weight per piece (including packaging) | 11.8 g |
| Unit of weight | G |
| Customs number | 39259020 |
| Country of origin | DE |
| Product description | Sealing Element |
| Colour | Grey |

Technical data

Dimensions

| | |
|--------|---------|
| Length | 42.7 mm |
| Width | 20.3 mm |
| Height | 17.7 mm |

Materials

| | |
|---------------------------|--------|
| Material | TPE |
| Flammability class UL 94 | V-0 |
| Working temperature, min. | -40 °C |
| Working temperature, max. | 90 °C |
| Halogen-free | ✓ |
| Silicone-free | ✓ |

Further technical data

| | |
|----------------------|---------|
| Mounting type | Plug in |
| Degree of protection | IP66 |
| Strain relief | ✓ |
| Cable width min. | 24 mm |
| Cable width max. | 30 mm |
| Cable thickness min. | 8.5 mm |
| Cable thickness max. | 9 mm |

Environmental Product Compliance

| | |
|--------------------------------|------------|
| REACH Conform | Yes |
| REACH Reference date | 2024-06-27 |
| REACH Candidate Substance Note | No |
| RoHS Conform | Yes |

Media

Accessories

Screw frame



Cable entry with moulded-in seal, Mounting type: Screws, Length: 98 mm, Width: 39 mm, IP 66, Colour: Black

| Article number | Article name | GTIN (EAN) | Packaging unit |
|-------------------------|-----------------|---------------|----------------|
| 28702.4 | KDS-SR-FB2/B BK | 4044211225490 | 10 ST |



Cable entry with moulded-in seal, Mounting type: Screws, Length: 147 mm, Width: 39 mm, IP 66, Colour: Black

| Article number | Article name | GTIN (EAN) | Packaging unit |
|-------------------------|-----------------|---------------|----------------|
| 28711.4 | KDS-SR-FB4/E BK | 4044211225582 | 10 ST |



Cable entry with injected seal, Mounting type: Screws, Length: 73 mm, Width: 39 mm, IP 66, Colour: Black

| Article number | Article name | GTIN (EAN) | Packaging unit |
|-------------------------|-----------------|---------------|----------------|
| 28700.4 | KDS-SR-FB1/A BK | 4044211225476 | 10 ST |



Cable entry with moulded-in seal, Mounting type: Screws, Length: 120 mm, Width: 39 mm, IP 66, Colour: Black

| Article number | Article name | GTIN (EAN) | Packaging unit |
|-------------------------|-----------------|---------------|----------------|
| 28705.4 | KDS-SR-FB3/C BK | 4044211225520 | 10 ST |



Cable entry with moulded-in seal, Mounting type: Screws, Length: 120 mm, Width: 39 mm, IP 66, Colour: Black

| Article number | Article name | GTIN (EAN) | Packaging unit |
|-------------------------|-----------------|---------------|----------------|
| 28706.4 | KDS-SR-FB3/D BK | 4044211225537 | 10 ST |



Cable entry with moulded-in seal, Mounting type: Screws, Length: 147 mm, Width: 39 mm, IP 66, Colour: Black

| Article number | Article name | GTIN (EAN) | Packaging unit |
|-------------------------|-----------------|---------------|----------------|
| 28709.4 | KDS-SR-FB4/C BK | 4044211225568 | 10 ST |

28716.6 KDS-DE-FB1/D GR

Screw frame



Cable entry with moulded-in seal, Mounting type: Screws, Length: 147 mm, Width: 39 mm, IP 66, Colour: Black

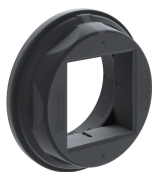
| Article number | Article name | GTIN (EAN) | Packaging unit |
|----------------|-----------------|---------------|----------------|
| <u>28710.4</u> | KDS-SR-FB4/D BK | 4044211225575 | 10 ST |

##INVERSE##CONTA-CABLE



Cable entry with moulded-in seal, Mounting type: Screws, Length: 147 mm, Width: 39 mm, IP 66, Colour: Black

| Article number | Article name | GTIN (EAN) | Packaging unit |
|----------------|-----------------|---------------|----------------|
| <u>28711.4</u> | KDS-SR-FB4/E BK | 4044211225582 | 10 ST |



Round cable entry, Material: polyamide PA 6.6, glass-fibre reinforced | TPE, Colour: Black

| Article number | Article name | GTIN (EAN) | Packaging unit |
|----------------|----------------|---------------|----------------|
| <u>28774.4</u> | KDS-R 40-63 BK | 4044211234546 | 5 ST |



Thread and locking adapter, Material: Polyamide PA 6.6, glass-fibre reinforced, Colour: Black

| Article number | Article name | GTIN (EAN) | Packaging unit |
|----------------|----------------|---------------|----------------|
| <u>28777.4</u> | KDS-RGA M63 BK | 4044211234577 | 5 ST |



Thread and locking adapter, Material: Polyamide PA 6.6, glass-fibre reinforced, Colour: Black

| Article number | Article name | GTIN (EAN) | Packaging unit |
|----------------|----------------|---------------|----------------|
| <u>28777.4</u> | KDS-RGA M63 BK | 4044211234577 | 5 ST |



Cable entry with moulded-in seal, Mounting type: Screws, Length: 147 mm, Width: 39 mm, IP 66, Colour: Black

| Article number | Article name | GTIN (EAN) | Packaging unit |
|----------------|-----------------|---------------|----------------|
| <u>28708.4</u> | KDS-SR-FB4/B BK | 4044211225551 | 10 ST |

28716.6 KDS-DE-FB1/D GR

##INVERSE##CONTA-CABLE

Cable entry with moulded-in seal, Mounting type: Screws, Length: 120 mm, Width: 39 mm, IP 66, Colour: Black



| Article number | Article name | GTIN (EAN) | Packaging unit |
|----------------|-----------------|---------------|----------------|
| <u>28706.4</u> | KDS-SR-FB3/D BK | 4044211225537 | 10 ST |

Cable entry with moulded-in seal, Mounting type: Screws, Length: 147 mm, Width: 39 mm, IP 66, Colour: Black



| Article number | Article name | GTIN (EAN) | Packaging unit |
|----------------|-----------------|---------------|----------------|
| <u>28710.4</u> | KDS-SR-FB4/D BK | 4044211225575 | 10 ST |

Cable entry with moulded-in seal, Mounting type: Screws, Length: 147 mm, Width: 39 mm, IP 66, Colour: Black



| Article number | Article name | GTIN (EAN) | Packaging unit |
|----------------|-----------------|---------------|----------------|
| <u>28710.4</u> | KDS-SR-FB4/D BK | 4044211225575 | 10 ST |

Cable entry with moulded-in seal, Mounting type: Screws, Length: 120 mm, Width: 39 mm, IP 66, Colour: Black



| Article number | Article name | GTIN (EAN) | Packaging unit |
|----------------|-----------------|---------------|----------------|
| <u>28706.4</u> | KDS-SR-FB3/D BK | 4044211225537 | 10 ST |

Cable entry with moulded-in seal, Mounting type: Screws, Length: 147 mm, Width: 39 mm, IP 66, Colour: Black



| Article number | Article name | GTIN (EAN) | Packaging unit |
|----------------|-----------------|---------------|----------------|
| <u>28708.4</u> | KDS-SR-FB4/B BK | 4044211225551 | 10 ST |

Cable entry with moulded-in seal, Mounting type: Screws, Length: 147 mm, Width: 39 mm, IP 66, Colour: Black



| Article number | Article name | GTIN (EAN) | Packaging unit |
|----------------|-----------------|---------------|----------------|
| <u>28710.4</u> | KDS-SR-FB4/D BK | 4044211225575 | 10 ST |