



Thread and locking adapter, Material: Polyamide PA 6.6, glass-fibre reinforced, Colour: Black

RAL: 9005

Business data

Article number	28772.4
Article name	KDS-RGA M25 BK
GTIN (EAN)	4044211234522
Packaging unit	5
Quantity unit	PC
Weight per piece (not including packaging)	7.6 g
Weight per piece (including packaging)	8.4 g
Unit of weight	G
Customs number	39259020
Country of origin	DE
Product description	Cable Entry
Colour	Black

Technical data

Dimensions

Length	38 mm
Length of wall cutout	25.3 mm
Width	38 mm
Width of wall cutout	25.3 mm
Height	22.1 mm
Installation height	14.9 mm

Thread

Thread type	Metric
Thread size	25 mm
Thread pitch	1.5 mm
Thread length (L)	14.9 mm

Materials

Material	Polyamide 6.6
Glass-fibre reinforced	✓
Flammability class UL 94	V-0
Working temperature, min.	-40 °C
Working temperature, max.	120 °C
Halogen-free	✓
Silicone-free	✓

Further technical data

Mounting type	Screws
Degree of protection	IP66
NEMA Type	1, 12, 4x (indoor use only)
Torque for the locknut	3 Nm

Environmental Product Compliance

REACH Conform	yes
REACH Reference date	2024-01-23
REACH Candidate Substance Note	No
RoHS Conform	yes

Approvals

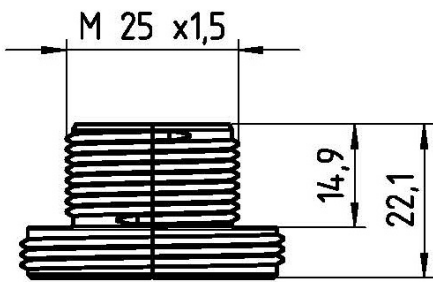
cUL Recognized

cUL approval	C22.2 No. 14-18
cUL File Number	E489821
cUL Recognized	1

UL Recognized

UL approval	UL 508A
UL File Number	E489821
UL Recognized	1
UL Type Rating	1, 12, 4x (indoor use only)

Media



28772.4 KDS-RGA M25 BK

Accessories

Locknut



Hex. nut, Thread type: metric, Thread size: 25 mm, Material: Polyamide, Colour: Light grey

Article number	Article name	GTIN (EAN)	Packaging unit
<u>4143.2</u>	S/M 25x1,5 GR	4044211114244	100

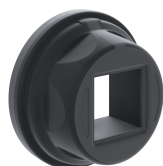
Locknuts



Hex. nut, Thread type: metric, Thread size: 25 mm, Material: Polyamide, Colour: Light grey

Article number	Article name	GTIN (EAN)	Packaging unit
<u>4143.2</u>	S/M 25x1,5 GR	4044211114244	100

##INVERSE##CONTA-CABLE



Round cable entry, Material: polyamide PA 6.6, glass-fibre reinforced | TPE, Colour: Black

Article number	Article name	GTIN (EAN)	Packaging unit
<u>28770.4</u>	KDS-R 20-32 BK	4044211234508	5 ST

Sheet-metal puncher

-

Article number	Article name	GTIN (EAN)	Packaging unit
<u>28755.0</u>	BL-VA KDS-KV M25	4044211234454	1 ST

28772.4 KDS-RGA M25 BK

Sheet-metal puncher



Sheet metal punch for round cutouts, Cutout diameter: 25.4 mm, Maximum wallthickness: 2.0 mm for S 235 sheet metal, Material: steel

Article number	Article name	GTIN (EAN)	Packaging unit
<u>28747.0</u>	BL KDS-KV M25	4044211222000	1 ST