



Cover, Length: 26.5 mm, Width: 12 mm, Colour: White

**RAL:** 9010

### Business data

Article number	<u>2967.0</u>
Article name	AD 1/12/N WH
GTIN (EAN)	4044211056964
Packaging unit	20
Quantity unit	PC
Weight per piece (not including packaging)	0.58 g
Weight per piece (including packaging)	0.61 g
Unit of weight	G
Customs number	85389099
Country of origin	DE
Product description	Cover
Colour	White

---

### Technical data

---

#### Dimensions

Length	26.5 mm
--------	---------

Width	12 mm
-------	-------

#### Materials

Material	Polyamide 6.6
----------	---------------

Flammability class UL 94	V-2
--------------------------	-----

Working temperature, min.	-40 °C
---------------------------	--------

Working temperature, max.	105 °C
---------------------------	--------

#### Environmental Product Compliance

REACH Conform	yes
---------------	-----

REACH Reference date	2024-01-23
----------------------	------------

REACH Candidate Substance Note	No
--------------------------------	----

RoHS Conform	yes
--------------	-----

---

### Media

---

### Accessories

#### ##INVERSE##CONTA-CONNECT



Feed-through terminal, Screw connection, Mounting type: Mounting rail TS 35/7.5, Rated cross-section: 16 mm<sup>2</sup>, Width: 12 mm, Colour: Beige

Article number	Article name	GTIN (EAN)	Packaging unit
<a href="#">1531.2</a>	RK 16/35/N/IS BG	4044211047085	50



Feed-through terminal, Screw connection, Mounting type: Mounting rail TS 35/7.5, Rated cross-section: 16 mm<sup>2</sup>, Width: 12 mm, Colour: Beige

Article number	Article name	GTIN (EAN)	Packaging unit
<a href="#">1532.2</a>	RK 16/35/N/Z/IS BG	4044211047122	50



Feed-through terminal, Screw connection, Mounting type: Mounting rail TS 35/7.5, Rated cross-section: 16 mm<sup>2</sup>, Width: 12 mm, Colour: Black-yellow

Article number	Article name	GTIN (EAN)	Packaging unit
<a href="#">2705.2</a>	RK 16/35 N/PE/IS BKYE	4044211172213	50 ST



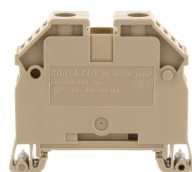
Ex feed-through terminal ATEX-certified, Screw connection, Mounting type: Mounting rail TS 35/7.5, Rated cross-section: 16 mm<sup>2</sup>, Width: 11.9 mm, Colour: Beige

Article number	Article name	GTIN (EAN)	Packaging unit
<a href="#">1409.2</a>	RK 16/35 N Ex BG	4044211107871	50



Feed-through terminal, Screw connection, Mounting type: Mounting rail TS 35/7.5, Rated cross-section: 16 mm<sup>2</sup>, Width: 12 mm, Colour: Beige

Article number	Article name	GTIN (EAN)	Packaging unit
<a href="#">1511.2</a>	RK 16/35/N BG	4044211046118	50



Feed-through terminal, Screw connection, Mounting type: Mounting rail TS 35/7.5, Rated cross-section: 16 mm<sup>2</sup>, Width: 12 mm, Colour: Beige

Article number	Article name	GTIN (EAN)	Packaging unit
<a href="#">1513.2</a>	RK 16/35/N/Z BG	4044211046163	50

---

### ##INVERSE##CONTA-CONNECT

---



Feed-through terminal, Screw connection, Mounting type: Mounting rail TS 35/7.5, Rated cross-section: 16 mm<sup>2</sup>, Width: 12 mm, Colour: Black-yellow

Article number	Article name	GTIN (EAN)	Packaging unit
<u>1565.2</u>	RK 16/35 N/PE BKYE	4044211047368	50 ST

---