

Data sheet

3811.2 ZES 35/2 BG



End stop, Mounting type: Mounting rail TS 35/7.5 and TS 35/15, Width: 5 mm, Colour: Beige

Business data

Article number	3811.2
Article name	ZES 35/2 BG
GTIN (EAN)	4044211080600
Packaging unit	50
Quantity unit	PC
Weight per piece (not including packaging)	3.12 g
Weight per piece (including packaging)	3.15 g
Unit of weight	G
Customs number	85389099
Country of origin	CZ
Prio-Article	3811.2
Product description	End bracket

Data sheet

3811.2 ZES 35/2 BG



Technical data

Dimensions

Length	48 mm
Width	5 mm
Terminal width	5.00 mm
Height TS 35/7.5	26.5 mm
Height TS 35/15	34 mm

Materials

Material	Polyamide 6.6
Flammability class UL 94	V-2
Working temperature, min.	-40 °C
Working temperature, max.	105 °C

Further technical data

Mounting type	Mounting rail TS 35/7,5 and TS 35/15
---------------	--------------------------------------

Environmental Product Compliance

REACH Conform	yes
REACH Reference date	2023-06-14
REACH Candidate Substance Note	No
RoHS Conform	yes

Media

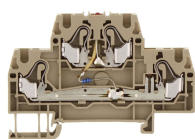
Accessories

##INVERSE##CONTA-CONNECT



Double-level terminal with electronic components, Push-in connection, Mounting type: Mounting rail TS 35/7.5, Rated cross-section: 2.5 mm², Width: 5.1 mm, Colour: Beige

Article number	Article name	GTIN (EAN)	Packaging unit
<u>3230.2</u>	FRKD 2,5/D1 BG	4044211130091	100



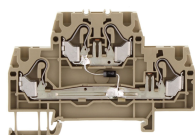
Double-level terminal with electronic components, Push-in connection, Mounting type: Mounting rail TS 35/7.5, Rated cross-section: 2.5 mm², Width: 5.1 mm, Colour: Beige

Article number	Article name	GTIN (EAN)	Packaging unit
<u>3237.2</u>	FRKD 2,5/LED1(RD) 24V DC BG	4044211131876	100 ST



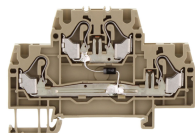
Double-level terminal with electronic components, Push-in connection, Mounting type: Mounting rail TS 35/7.5, Rated cross-section: 2.5 mm², Width: 5.1 mm, Colour: Beige

Article number	Article name	GTIN (EAN)	Packaging unit
<u>3238.2</u>	FRKD 2,5/LED2(RD) 24V DC BG	4044211131883	100 ST



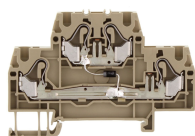
Double-level terminal with electronic components, Push-in connection, Mounting type: Mounting rail TS 35/7.5, Rated cross-section: 2.5 mm², Width: 5.1 mm, Colour: Beige

Article number	Article name	GTIN (EAN)	Packaging unit
<u>3253.2</u>	FRKD 2,5/D2 BG	4044211131838	100 ST



Double-level terminal with electronic components, Push-in connection, Mounting type: Mounting rail TS 35/7.5, Rated cross-section: 2.5 mm², Width: 5.1 mm, Colour: Beige

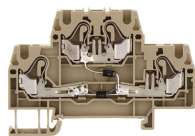
Article number	Article name	GTIN (EAN)	Packaging unit
<u>3254.2</u>	FRKD 2,5/D3 BG	4044211131845	100 ST



Double-level terminal with electronic components, Push-in connection, Mounting type: Mounting rail TS 35/7.5, Rated cross-section: 2.5 mm², Width: 5.1 mm, Colour: Beige

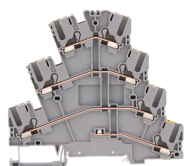
Article number	Article name	GTIN (EAN)	Packaging unit
<u>3255.2</u>	FRKD 2,5/D4 BG	4044211131852	100 ST

##INVERSE##CONTA-CONNECT



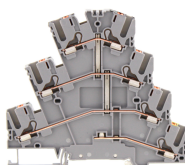
Double-level terminal with electronic components, Push-in connection, Mounting type: Mounting rail TS 35/7.5, Rated cross-section: 2.5 mm², Width: 5.1 mm, Colour: Beige

Article number	Article name	GTIN (EAN)	Packaging unit
<u>3256.2</u>	FRKD 2,5/D5 BG	4044211131869	100 ST



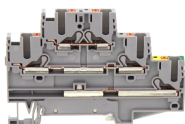
Three-level initiator terminal | Multi-wire terminal, Push-in connection, Mounting type: Mounting rail TS 35/7.5, Rated cross-section: 2.5 mm², Width: 5.1 mm, Colour: Grey

Article number	Article name	GTIN (EAN)	Packaging unit
<u>27046.6</u>	PVMAK 2,5 GR	4044211227289	50 ST



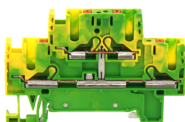
Three-level initiator terminal | Multi-wire terminal, Push-in connection, Mounting type: Mounting rail TS 35/7.5, Rated cross-section: 2.5 mm², Width: 5.1 mm, Colour: Grey

Article number	Article name	GTIN (EAN)	Packaging unit
<u>27047.6</u>	PVMAK 2,5/SV GR	4044211227296	50 ST



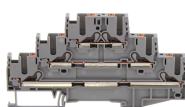
Three-level initiator terminal | Multi-wire terminal, Push-in connection, Mounting type: Mounting rail TS 35/7.5, Rated cross-section: 2.5 mm², Width: 5.1 mm, Colour: Grey

Article number	Article name	GTIN (EAN)	Packaging unit
<u>27048.6</u>	PIKD 2,5/1PE/L/L GR	4044211227173	50 ST



Protective-earth double-level terminal, Push-in connection, Mounting type: Mounting rail TS 35/7.5, Rated cross-section: 2.5 mm², Width: 5.1 mm, Colour: Green-yellow

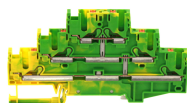
Article number	Article name	GTIN (EAN)	Packaging unit
<u>27037.2</u>	PSLD 2,5 GNYE	4044211226718	50 ST



Three-level initiator terminal | Multi-wire terminal, Push-in connection, Mounting type: Mounting rail TS 35/7.5, Rated cross-section: 2.5 mm², Width: 5.1 mm, Colour: Grey

Article number	Article name	GTIN (EAN)	Packaging unit
<u>27039.6</u>	PIKD 2,5 GR	4044211227210	50

##INVERSE##CONTA-CONNECT



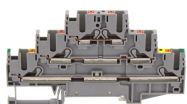
Three-level initiator terminal | Multi-wire terminal, Push-in connection, Mounting type: Mounting rail TS 35/7.5, Rated cross-section: 2.5 mm², Width: 5,1 mm, Colour: Grey

Article number	Article name	GTIN (EAN)	Packaging unit
<u>27040.2</u>	PIKD 2,5/SV/PE GNYE	4044211227227	50 ST



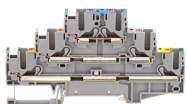
Three-level initiator terminal | Multi-wire terminal, Push-in connection, Mounting type: Mounting rail TS 35/7.5, Rated cross-section: 2.5 mm², Width: 5.1 mm, Colour: Grey

Article number	Article name	GTIN (EAN)	Packaging unit
<u>27041.6</u>	PIKD 2,5/SV GR	4044211227241	50



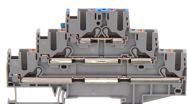
Three-level initiator terminal | Multi-wire terminal, Push-in connection, Mounting type: Mounting rail TS 35/7.5, Rated cross-section: 2.5 mm², Width: 5.1 mm, Colour: Grey

Article number	Article name	GTIN (EAN)	Packaging unit
<u>27042.6</u>	PIKD 2,5/PE/L/L GR	4044211227258	50 ST



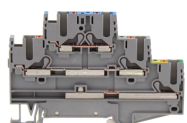
Three-level initiator terminal | Multi-wire terminal, Push-in connection, Mounting type: Mounting rail TS 35/7.5, Rated cross-section: 2.5 mm², Width: 5.1 mm, Colour: Grey

Article number	Article name	GTIN (EAN)	Packaging unit
<u>27043.6</u>	PIKD 2,5/PE/L/N GR	4044211227265	50 ST



Three-level initiator terminal | Multi-wire terminal, Push-in connection, Mounting type: Mounting rail TS 35/7.5, Rated cross-section: 2.5 mm², Width: 5.1 mm, Colour: Grey

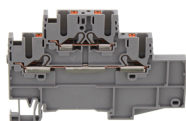
Article number	Article name	GTIN (EAN)	Packaging unit
<u>27045.6</u>	PIKD 2,5/L/L/N GR	4044211227272	50 ST



Three-level initiator terminal | Multi-wire terminal, Push-in connection, Mounting type: Mounting rail TS 35/7.5, Rated cross-section: 2.5 mm², Width: 5.1 mm, Colour: Grey

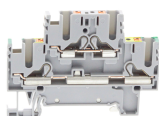
Article number	Article name	GTIN (EAN)	Packaging unit
<u>27049.6</u>	PIKD 2,5/1PE/L/N GR	4044211227180	50 ST

##INVERSE##CONTA-CONNECT



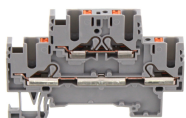
Three-level initiator terminal |Multi-wire terminal, Push-in connection, Mounting type: Mounting rail TS 35/7.5, Rated cross-section: 2.5 mm², Width: 5.1 mm, Colour: Grey

Article number	Article name	GTIN (EAN)	Packaging unit
<u>27050.6</u>	PIKD 2,5/1/L/L GR	4044211227302	50 ST



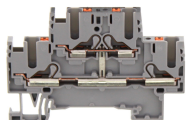
Double-level terminal, Push-in connection, Mounting type: Mounting rail TS 35/7.5, Rated cross-section: 2.5 mm², Width: 5.1 mm, Colour: Grey

Article number	Article name	GTIN (EAN)	Packaging unit
<u>27051.6</u>	PRKD 2,5/PE/L GR	4044211227159	50 ST



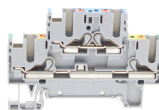
Double-level terminal, Push-in connection, Mounting type: Mounting rail TS 35/7.5, Rated cross-section: 2.5 mm², Width: 5.1 mm, Colour: Grey

Article number	Article name	GTIN (EAN)	Packaging unit
<u>27036.6</u>	PRKD 2,5 GR	4044211226695	50



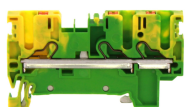
Double-level terminal, Push-in connection, Mounting type: Mounting rail TS 35/7.5, Rated cross-section: 2.5 mm², Width: 5.1 mm, Colour: Grey

Article number	Article name	GTIN (EAN)	Packaging unit
<u>27038.6</u>	PRKD 2,5/SV GR	4044211227142	50



Double-level terminal, Push-in connection, Mounting type: Mounting rail TS 35/7.5, Rated cross-section: 2.5 mm², Width: 5.1 mm, Colour: Grey

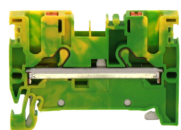
Article number	Article name	GTIN (EAN)	Packaging unit
<u>27052.6</u>	PRKD 2,5/PE/N GR	4044211227166	50 ST



Protective earth terminal, Push-in connection, Mounting type: Mounting rail TS 35/7.5, Rated cross-section: 2.5 mm², Width: 5.1 mm, Colour: Green-yellow

Article number	Article name	GTIN (EAN)	Packaging unit
<u>27009.2</u>	PSL 2,5/3A GNYE	4044211223847	50 ST

##INVERSE##CONTA-CONNECT



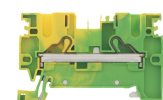
Protective earth terminal, Push-in connection, Mounting type: Mounting rail TS 35/7.5,
Rated cross-section: 2.5 mm², Width: 5.1 mm, Colour: Green-yellow

Article number	Article name	GTIN (EAN)	Packaging unit
<u>27007.2</u>	PSL 2,5/2A GNYE	4044211223809	50 ST



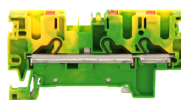
Protective earth terminal, Push-in connection, Mounting type: Mounting rail TS 35/7.5,
Rated cross-section: 2.5 mm², Width: 5.1 mm, Colour: Green-yellow

Article number	Article name	GTIN (EAN)	Packaging unit
<u>27011.2</u>	PSL 2,5/4A GNYE	4044211223885	50 ST



Protective earth terminal, Push-in connection, Mounting type: Mounting rail TS 35/7.5,
Rated cross-section: 4 mm², Width: 6.1 mm, Colour: Green-yellow

Article number	Article name	GTIN (EAN)	Packaging unit
<u>27013.2</u>	PSL 4/2A GNYE	4044211215804	50 ST



Protective earth terminal, Push-in connection, Mounting type: Mounting rail TS 35/7.5,
Rated cross-section: 4 mm², Width: 6.1 mm, Colour: Green-yellow

Article number	Article name	GTIN (EAN)	Packaging unit
<u>27015.2</u>	PSL 4/3A GNYE	4044211215842	50 ST



Protective earth terminal, Push-in connection, Mounting type: Mounting rail TS 35/7.5,
Rated cross-section: 4 mm², Width: 6.1 mm, Colour: Green-yellow

Article number	Article name	GTIN (EAN)	Packaging unit
<u>27017.2</u>	PSL 4/4A GNYE	4044211215880	50 ST



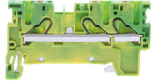
Protective earth terminal, Push-in connection, Mounting type: Mounting rail TS 35/7.5,
Rated cross-section: 1.5 mm², Width: 3.5 mm, Colour: Green-yellow

Article number	Article name	GTIN (EAN)	Packaging unit
<u>27001.2</u>	PSL 1,5/2A GNYE	4044211223687	50 ST

Data sheet

3811.2 ZES 35/2 BG

##INVERSE##CONTA-CONNECT



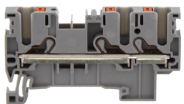
Protective earth terminal, Push-in connection, Mounting type: Mounting rail TS 35/7.5,
Rated cross-section: 1.5 mm², Width: 3.5 mm, Colour: Green-yellow

Article number	Article name	GTIN (EAN)	Packaging unit
<u>27003.2</u>	PSL 1,5/3A GNYE	4044211223724	50 ST



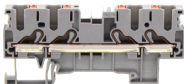
Protective earth terminal, Push-in connection, Mounting type: Mounting rail TS 35/7.5,
Rated cross-section: 1.5 mm², Width: 3.5 mm, Colour: Green-yellow

Article number	Article name	GTIN (EAN)	Packaging unit
<u>27005.2</u>	PSL 1,5/4A GNYE	4044211223762	50 ST



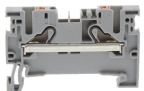
Feed-through terminal, Push-in connection, Mounting type: Mounting rail TS 35/7.5,
Rated cross-section: 2.5 mm², Width: 5.1 mm, Colour: Grey

Article number	Article name	GTIN (EAN)	Packaging unit
<u>27008.6</u>	PRK 2,5/3A GR	4044211223830	50



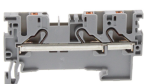
Feed-through terminal, Push-in connection, Mounting type: Mounting rail TS 35/7.5,
Rated cross-section: 4 mm², Width: 6.1 mm, Colour: Grey

Article number	Article name	GTIN (EAN)	Packaging unit
<u>27016.6</u>	PRK 4/4A GR	4044211215873	50



Feed-through terminal, Push-in connection, Mounting type: Mounting rail TS 35/7.5,
Rated cross-section: 1.5 mm², Width: 3.5 mm, Colour: Grey

Article number	Article name	GTIN (EAN)	Packaging unit
<u>27000.6</u>	PRK 1,5/2A GR	4044211223670	50



Feed-through terminal, Push-in connection, Mounting type: Mounting rail TS 35/7.5,
Rated cross-section: 1.5 mm², Width: 3.5 mm, Colour: Grey

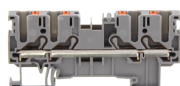
Article number	Article name	GTIN (EAN)	Packaging unit
<u>27002.6</u>	PRK 1,5/3A GR	4044211223717	50

##INVERSE##CONTA-CONNECT



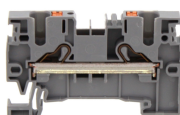
Feed-through terminal, Push-in connection, Mounting type: Mounting rail TS 35/7.5,
Rated cross-section: 1.5 mm², Width: 3.5 mm, Colour: Grey

Article number	Article name	GTIN (EAN)	Packaging unit
<u>27004.6</u>	PRK 1,5/4A GR	4044211223755	50



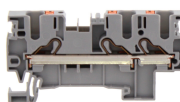
Feed-through terminal, Push-in connection, Mounting type: Mounting rail TS 35/7.5,
Rated cross-section: 2.5 mm², Width: 5.1 mm, Colour: Grey

Article number	Article name	GTIN (EAN)	Packaging unit
<u>27010.6</u>	PRK 2,5/4A GR	4044211223878	50



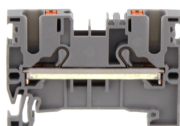
Feed-through terminal, Push-in connection, Mounting type: Mounting rail TS 35/7.5,
Rated cross-section: 4 mm², Width: 6.1 mm, Colour: Grey

Article number	Article name	GTIN (EAN)	Packaging unit
<u>27012.6</u>	PRK 4/2A GR	4044211215774	50



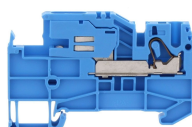
Feed-through terminal, Push-in connection, Mounting type: Mounting rail TS 35/7.5,
Rated cross-section: 4 mm², Width: 6.1 mm, Colour: Grey

Article number	Article name	GTIN (EAN)	Packaging unit
<u>27014.6</u>	PRK 4/3A GR	4044211215835	50



Feed-through terminal, Push-in connection, Mounting type: Mounting rail TS 35/7.5,
Rated cross-section: 2.5 mm², Width: 5.1 mm, Colour: Grey

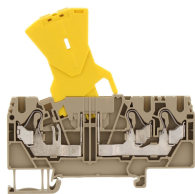
Article number	Article name	GTIN (EAN)	Packaging unit
<u>27006.6</u>	PRK 2,5/2A GR	4044211223793	50



Neutral-disconnect terminal, Push-in connection, Mounting type: Mounting rail TS 35/7.5,
Rated cross-section: 4 mm², Width: 5.1 mm, Colour: Blue

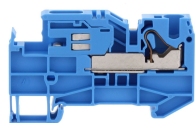
Article number	Article name	GTIN (EAN)	Packaging unit
<u>3273.5</u>	FNT 2,5-4 BU	4044211138974	100 ST

##INVERSE##CONTA-CONNECT



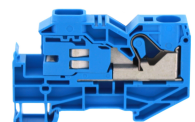
Fuse-disconnect terminal, Push-in connection, Mounting type: Mounting rail TS 35/7.5, Rated cross-section: 2.5 mm², Width: 5.1 mm, Colour: Beige

Article number	Article name	GTIN (EAN)	Packaging unit
<u>3268.2</u>	FTRK 2,5/3A/ZS BG	4044211138011	100



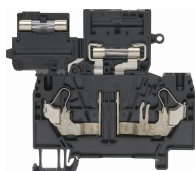
Neutral-disconnect terminal, Push-in connection, Mounting type: Mounting rail TS 35/7.5, Rated cross-section: 10 mm², Width: 8.1 mm, Colour: Blue

Article number	Article name	GTIN (EAN)	Packaging unit
<u>3274.5</u>	FNT 6-10 BU	4044211138981	100 ST



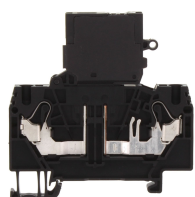
Neutral-disconnect terminal, Push-in connection, Mounting type: Mounting rail TS 35/7.5, Rated cross-section: 16 mm², Width: 12.1 mm, Colour: Blue

Article number	Article name	GTIN (EAN)	Packaging unit
<u>3275.5</u>	FNT 16 BU	4044211138998	50 ST



Fuse-disconnect terminal, Push-in connection, Mounting type: Mounting rail TS 35/7.5, Rated cross-section: 4 mm², Width: 6 mm, Colour: Black

Article number	Article name	GTIN (EAN)	Packaging unit
<u>3290.4</u>	FSIK 4/2A BK	4044211180287	25 ST



Fuse-disconnect terminal, Push-in connection, Mounting type: Mounting rail TS 35/7.5, Rated cross-section: 4 mm², Width: 6 mm, Colour: Black

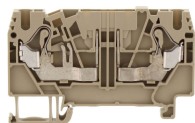
Article number	Article name	GTIN (EAN)	Packaging unit
<u>3291.4</u>	FSIK 4/2A/LED 12-30V AC/DC BK	4044211188962	25 ST



Disconnect-blade terminal, Push-in connection, Mounting type: Mounting rail TS 35/7.5, Rated cross-section: 4 mm², Width: 6.1 mm, Colour: Black

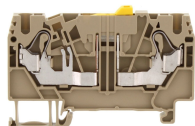
Article number	Article name	GTIN (EAN)	Packaging unit
<u>3239.4</u>	FSIK 4/2A/MT BK	4044211209933	50 ST

##INVERSE##CONTA-CONNECT



Basic terminal, Push-in connection, Mounting type: Mounting rail TS 35/7.5, Rated cross-section: 2.5 mm², Width: 5.1 mm, Colour: Beige

Article number	Article name	GTIN (EAN)	Packaging unit
<u>3257.2</u>	FTRK 2,5/2A/OT BG	4044211137687	100



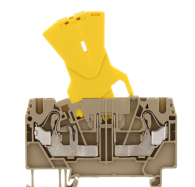
Disconnect-blade terminal, Push-in connection, Mounting type: Mounting rail TS 35/7.5, Rated cross-section: 2.5 mm², Width: 5.1 mm, Colour: Beige

Article number	Article name	GTIN (EAN)	Packaging unit
<u>3259.2</u>	FTRK 2,5/2A/MT BG	4044211137748	100



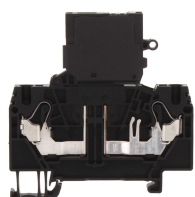
Disconnect-blade terminal, Push-in connection, Mounting type: Mounting rail TS 35/7.5, Rated cross-section: 2.5 mm², Width: 5.1 mm, Colour: Beige

Article number	Article name	GTIN (EAN)	Packaging unit
<u>3260.2</u>	FTRK 2,5/3A/MT BG	4044211137779	100



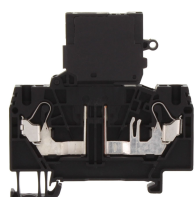
Fuse-disconnect terminal, Push-in connection, Mounting type: Mounting rail TS 35/7.5, Rated cross-section: 2.5 mm², Width: 5.1 mm, Colour: Beige

Article number	Article name	GTIN (EAN)	Packaging unit
<u>3263.2</u>	FTRK 2,5/2A/ZS BG	4044211137847	100



Fuse-disconnect terminal, Push-in connection, Mounting type: Mounting rail TS 35/7.5, Rated cross-section: 4 mm², Width: 6 mm, Colour: Black

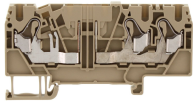
Article number	Article name	GTIN (EAN)	Packaging unit
<u>3292.4</u>	FSIK 4/2A/LED 30-60V AC/DC BK	4044211188979	25 ST



Fuse-disconnect terminal, Push-in connection, Mounting type: Mounting rail TS 35/7.5, Rated cross-section: 4 mm², Width: 6 mm, Colour: Black

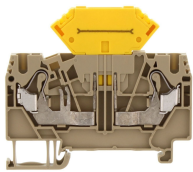
Article number	Article name	GTIN (EAN)	Packaging unit
<u>3293.4</u>	FSIK 4/2A/LED 110-250V AC/DC BK	4044211188986	25 ST

##INVERSE##CONTA-CONNECT



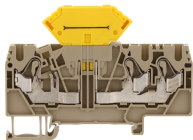
Basic terminal, Push-in connection, Mounting type: Mounting rail TS 35/7.5, Rated cross-section: 2.5 mm², Width: 5.1 mm, Colour: Beige

Article number	Article name	GTIN (EAN)	Packaging unit
<u>3258.2</u>	FTRK 2,5/3A/OT BG	4044211137717	100



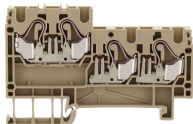
Disconnect terminal, Push-in connection, Mounting type: Mounting rail TS 35/7.5, Rated cross-section: 2.5 mm², Width: 5.1 mm, Colour: Beige

Article number	Article name	GTIN (EAN)	Packaging unit
<u>3261.2</u>	FTRK 2,5/2A/ST BG	4044211137809	100



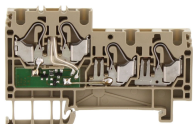
Disconnect terminal, Push-in connection, Mounting type: Mounting rail TS 35/7.5, Rated cross-section: 2.5 mm², Width: 5.1 mm, Colour: Beige

Article number	Article name	GTIN (EAN)	Packaging unit
<u>3262.2</u>	FTRK 2,5/3A/ST BG	4044211137823	100



Initiator terminal / actuator terminal, Push-in connection, Mounting type: Mounting rail TS 35/7.5, Rated cross-section: 2.5 mm², Width: 5.1 mm, Colour: Beige

Article number	Article name	GTIN (EAN)	Packaging unit
<u>3295.2</u>	FIK 2,5/3 BG	4044211190095	100 ST



Initiator terminal / actuator terminal, Push-in connection, Mounting type: Mounting rail TS 35/7.5, Rated cross-section: 2.5 mm², Width: 5.1 mm, Colour: Beige

Article number	Article name	GTIN (EAN)	Packaging unit
<u>3296.2</u>	FIK 2,5/3/LED(RD) BG	4044211190118	100 ST



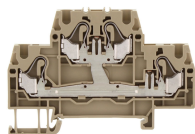
Protective-earth double-level terminal, Push-in connection, Mounting type: Mounting rail TS 35/7.5, Rated cross-section: 2.5 mm², Width: 5.1 mm, Colour: Green-yellow

Article number	Article name	GTIN (EAN)	Packaging unit
<u>3208.2</u>	FSLD 2,5/3A GNYE	4044211207038	50 ST

Data sheet

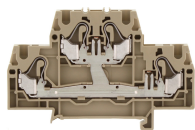
3811.2 ZES 35/2 BG

##INVERSE##CONTA-CONNECT



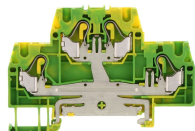
Double-level terminal, Push-in connection, Mounting type: Mounting rail TS 35/7.5, Rated cross-section: 2.5 mm², Width: 5.1 mm, Colour: Beige

Article number	Article name	GTIN (EAN)	Packaging unit
<u>3227.2</u>	FRKD 2,5/SV BG	4044211130060	100



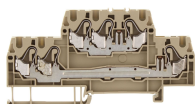
Double-level terminal connected vertically with housing pegs, block variant, Push-in connection, Mounting type: Mounting rail TS 35/7.5, Rated cross-section: 2.5 mm², Width: 5.1 mm, Colour: Beige

Article number	Article name	GTIN (EAN)	Packaging unit
<u>3232.2</u>	FRKD 2,5 SV-BL BG	4044211130114	50 ST



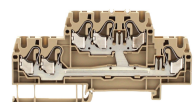
Protective-earth double-level terminal, Push-in connection, Mounting type: Mounting rail TS 35/7.5, Rated cross-section: 2.5 mm², Width: 5.1 mm, Colour: Green-yellow

Article number	Article name	GTIN (EAN)	Packaging unit
<u>3236.2</u>	FSLD 2,5 GNYE	4044211130152	100 ST



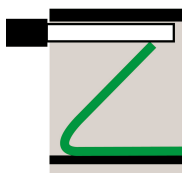
Double-level terminal, Push-in connection, Mounting type: Mounting rail TS 35/7.5, Rated cross-section: 2.5 mm², Width: 5.1 mm, Colour: Beige

Article number	Article name	GTIN (EAN)	Packaging unit
<u>3206.2</u>	FRKD 2,5/3A BG	4044211206970	50



Double-level terminal, Push-in connection, Mounting type: Mounting rail TS 35/7.5, Rated cross-section: 2.5 mm², Width: 5.1 mm, Colour: Beige

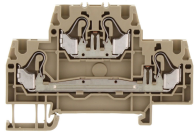
Article number	Article name	GTIN (EAN)	Packaging unit
<u>3207.2</u>	FRKD 2,5/3A/SV BG	4044211207007	50



Double-level terminal, Push-in connection, Mounting type: Mounting rail TS 35/7.5, Colour: Beige

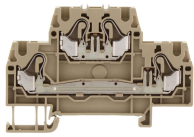
Article number	Article name	GTIN (EAN)	Packaging unit
<u>3219.2</u>	FRKD 2,5/3A/SV MI BG	4044211209957	50 ST

##INVERSE##CONTA-CONNECT



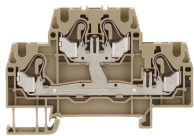
Double-level terminal, Push-in connection, Mounting type: Mounting rail TS 35/7.5, Rated cross-section: 2.5 mm², Width: 5.1 mm, Colour: Beige

Article number	Article name	GTIN (EAN)	Packaging unit
<u>3226.2</u>	FRKD 2,5 BG	4044211130053	100



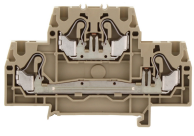
Double-level terminal, Push-in connection, Mounting type: Mounting rail TS 35/7.5, Rated cross-section: 2.5 mm², Width: 5.1 mm, Colour: Beige

Article number	Article name	GTIN (EAN)	Packaging unit
<u>3228.2</u>	FRKD 2,5/Z BG	4044211130077	50 ST



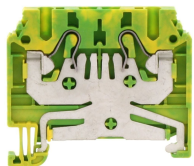
Double-level terminal, Push-in connection, Mounting type: Mounting rail TS 35/7.5, Rated cross-section: 2.5 mm², Width: 5.1 mm, Colour: Beige

Article number	Article name	GTIN (EAN)	Packaging unit
<u>3229.2</u>	FRKD 2,5 SV/Z BG	4044211130084	50 ST



Double-level terminal with housing pegs, block variant, Push-in connection, Mounting type: Mounting rail TS 35/7.5, Rated cross-section: 2.5 mm², Width: 5.1 mm, Colour: Beige

Article number	Article name	GTIN (EAN)	Packaging unit
<u>3231.2</u>	FRKD 2,5-BL BG	4044211130107	50 ST



Protective earth terminal, Push-in connection, Mounting type: Mounting rail TS 35/7.5, Rated cross-section: 1.5 mm², Width: 4.1 mm, Colour: Green-yellow

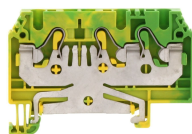
Article number	Article name	GTIN (EAN)	Packaging unit
<u>3203.2</u>	FSL 1,5/2A GNYE	4044211110109	100 ST



Protective earth terminal, Push-in connection, Mounting type: Mounting rail TS 35/7.5, Rated cross-section: 2.5 mm², Width: 5.1 mm, Colour: Green-yellow

Article number	Article name	GTIN (EAN)	Packaging unit
<u>3213.2</u>	FSL 2,5/2A GNYE	4044211110130	100 ST

##INVERSE##CONTA-CONNECT



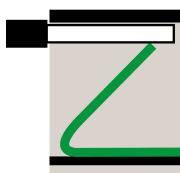
Protective earth terminal, Push-in connection, Mounting type: Mounting rail TS 35/7.5,
Rated cross-section: 2.5 mm², Width: 5.1 mm, Colour: Green-yellow

Article number	Article name	GTIN (EAN)	Packaging unit
<u>3214.2</u>	FSL 2,5/3A GNYE	4044211110147	100 ST



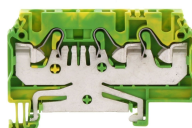
PE installation terminal, Push-in connection, Mounting type: Mounting rail TS 35/7.5,
Rated cross-section: 10 mm², Width: 8.1 mm, Colour: Green-yellow

Article number	Article name	GTIN (EAN)	Packaging unit
<u>3217.2</u>	FSLI 6-10/3A GNYE	4044211199944	50 ST



Double-level terminal, Push-in connection, Mounting type: Mounting rail TS 35/7.5,
Colour: Beige

Article number	Article name	GTIN (EAN)	Packaging unit
<u>3218.2</u>	FRKD 2,5/3A MI BG	4044211209940	50 ST



Protective earth terminal, Push-in connection, Mounting type: Mounting rail TS 35/7.5,
Rated cross-section: 4 mm², Width: 6.1 mm, Colour: Green-yellow

Article number	Article name	GTIN (EAN)	Packaging unit
<u>3224.2</u>	FSL 4/3A GNYE	4044211110178	100 ST



Protective earth terminal, Push-in connection, Mounting type: Mounting rail TS 35/7.5,
Rated cross-section: 4 mm², Width: 6.1 mm, Colour: Green-yellow

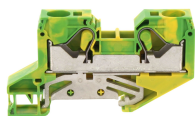
Article number	Article name	GTIN (EAN)	Packaging unit
<u>3225.2</u>	FSL 4/4A GNYE	4044211110185	100 ST



PE installation terminal, Push-in connection, Mounting type: Mounting rail TS 35/7.5,
Rated cross-section: 4 mm², Width: 5.1 mm, Colour: Green-yellow

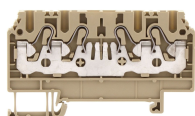
Article number	Article name	GTIN (EAN)	Packaging unit
<u>3279.2</u>	FSLI 2,5-4 GNYE	4044211139094	100 ST

##INVERSE##CONTA-CONNECT



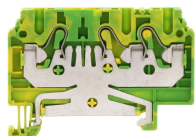
PE installation terminal, Push-in connection, Mounting type: Mounting rail TS 35/7.5, Colour: Green-yellow

Article number	Article name	GTIN (EAN)	Packaging unit
<u>3281.2</u>	FSLI 16/2A GNYE	4044211139186	50 ST



Feed-through terminal, Push-in connection, Mounting type: Mounting rail TS 35/7.5, Rated cross-section: 1.5 mm², Width: 4.1 mm, Colour: Beige

Article number	Article name	GTIN (EAN)	Packaging unit
<u>3202.2</u>	FRK 1,5/4A BG	4044211109684	100



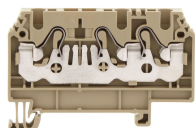
Protective earth terminal, Push-in connection, Mounting type: Mounting rail TS 35/7.5, Rated cross-section: 1.5 mm², Width: 4.1 mm, Colour: Green-yellow

Article number	Article name	GTIN (EAN)	Packaging unit
<u>3204.2</u>	FSL 1,5/3A GNYE	4044211110116	100 ST



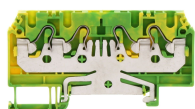
Protective earth terminal, Push-in connection, Mounting type: Mounting rail TS 35/7.5, Rated cross-section: 1.5 mm², Width: 4.1 mm, Colour: Green-yellow

Article number	Article name	GTIN (EAN)	Packaging unit
<u>3205.2</u>	FSL 1,5/4A GNYE	4044211110123	100 ST



Feed-through terminal, Push-in connection, Mounting type: Mounting rail TS 35/7.5, Rated cross-section: 2.5 mm², Width: 5.1 mm, Colour: Beige

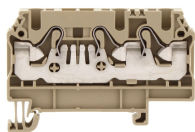
Article number	Article name	GTIN (EAN)	Packaging unit
<u>3211.2</u>	FRK 2,5/3A BG	4044211109806	100



Protective earth terminal, Push-in connection, Mounting type: Mounting rail TS 35/7.5, Rated cross-section: 2.5 mm², Width: 5.1 mm, Colour: Green-yellow

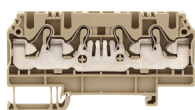
Article number	Article name	GTIN (EAN)	Packaging unit
<u>3215.2</u>	FSL 2,5/4A GNYE	4044211110154	100 ST

##INVERSE##CONTA-CONNECT



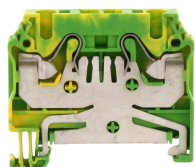
Feed-through terminal, Push-in connection, Mounting type: Mounting rail TS 35/7.5,
Rated cross-section: 4 mm², Width: 6.1 mm, Colour: Beige

Article number	Article name	GTIN (EAN)	Packaging unit
3221.2	FRK 4/3A BG	4044211109981	100



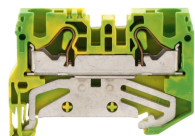
Feed-through terminal, Push-in connection, Mounting type: Mounting rail TS 35/7.5,
Rated cross-section: 4 mm², Width: 6.1 mm, Colour: Beige

Article number	Article name	GTIN (EAN)	Packaging unit
3222.2	FRK 4/4A BG	4044211110048	100



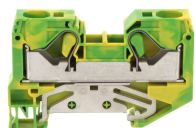
Protective earth terminal, Push-in connection, Mounting type: Mounting rail TS 35/7.5,
Rated cross-section: 4 mm², Width: 6.1 mm, Colour: Green-yellow

Article number	Article name	GTIN (EAN)	Packaging unit
3223.2	FSL 4/2A GNYE	4044211110161	100 ST



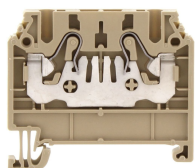
PE installation terminal, Push-in connection, Mounting type: Mounting rail TS 35/7.5,
Rated cross-section: 10 mm², Width: 8.1 mm, Colour: Green-yellow

Article number	Article name	GTIN (EAN)	Packaging unit
3280.2	FSLI 6-10 GNYE	4044211139100	100 ST



Protective earth terminal, Push-in connection, Mounting type: Mounting rail TS 35/7.5,
Colour: Green-yellow

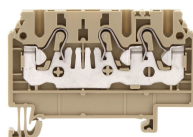
Article number	Article name	GTIN (EAN)	Packaging unit
3299.2	FSL 16/2A GNYE	4044211199869	50 ST



Feed-through terminal, Push-in connection, Mounting type: Mounting rail TS 35/7.5,
Rated cross-section: 1.5 mm², Width: 4.1 mm, Colour: Beige

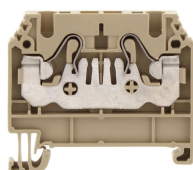
Article number	Article name	GTIN (EAN)	Packaging unit
3200.2	FRK 1,5/2A BG	4044211109530	100

##INVERSE##CONTA-CONNECT



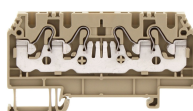
Feed-through terminal, Push-in connection, Mounting type: Mounting rail TS 35/7.5,
Rated cross-section: 1.5 mm², Width: 4.1 mm, Colour: Beige

Article number	Article name	GTIN (EAN)	Packaging unit
<u>3201.2</u>	FRK 1,5/3A BG	4044211109615	100



Feed-through terminal, Push-in connection, Mounting type: Mounting rail TS 35/7.5,
Rated cross-section: 2.5 mm², Width: 5.1 mm, Colour: Beige

Article number	Article name	GTIN (EAN)	Packaging unit
<u>3210.2</u>	FRK 2,5/2A BG	4044211109745	100



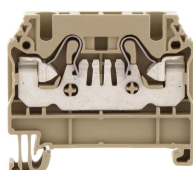
Feed-through terminal, Push-in connection, Mounting type: Mounting rail TS 35/7.5,
Rated cross-section: 2.5 mm², Width: 5.1 mm, Colour: Beige

Article number	Article name	GTIN (EAN)	Packaging unit
<u>3212.2</u>	FRK 2,5/4A BG	4044211109868	100



Feed-through installation terminal, Push-in connection, Mounting type: Mounting rail TS 35/7.5,
Rated cross-section: 10 mm², Width: 8.1 mm, Colour: Beige

Article number	Article name	GTIN (EAN)	Packaging unit
<u>3216.2</u>	FRKI 6-10/3A BG	4044211199913	50



Feed-through terminal, Push-in connection, Mounting type: Mounting rail TS 35/7.5,
Rated cross-section: 4 mm², Width: 6.1 mm, Colour: Beige

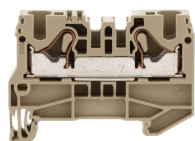
Article number	Article name	GTIN (EAN)	Packaging unit
<u>3220.2</u>	FRK 4/2A BG	4044211109929	100



Feed-through installation terminal, Push-in connection, Mounting type: Mounting rail TS 35/7.5,
Rated cross-section: 4 mm², Width: 5.1 mm, Colour: Beige

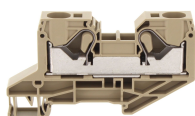
Article number	Article name	GTIN (EAN)	Packaging unit
<u>3276.2</u>	FRKI 2,5-4 BG	4044211139001	100

##INVERSE##CONTA-CONNECT



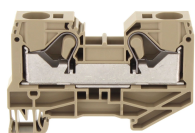
Feed-through installation terminal, Push-in connection, Mounting type: Mounting rail TS 35/7.5, Rated cross-section: 10 mm², Width: 8.1 mm, Colour: Beige

Article number	Article name	GTIN (EAN)	Packaging unit
3277.2	FRKI 6-10 BG	4044211139032	100



Feed-through installation terminal, Push-in connection, Mounting type: Mounting rail TS 35/7.5, Colour: Beige

Article number	Article name	GTIN (EAN)	Packaging unit
3278.2	FRKI 16/2A BG	4044211139063	50



Feed-through terminal, Push-in connection, Mounting type: Mounting rail TS 35/7.5, Colour: Beige

Article number	Article name	GTIN (EAN)	Packaging unit
3294.2	FRK 16/2A BG	4044211199838	50



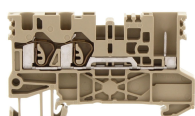
Feed-through terminal, Tension-spring connection, Mounting type: Mounting rail TS 35/7.5, Rated cross-section: 2.5 mm², Width: 5.1 mm, Colour: Beige

Article number	Article name	GTIN (EAN)	Packaging unit
3653.2	ZRKS 2,5/2A/2S BG	4044211177683	100



Protective earth terminal, Tension-spring connection, Mounting type: Mounting rail TS 35/7.5, Rated cross-section: 2.5 mm², Width: 5.1 mm, Colour: Green-yellow

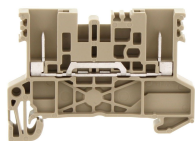
Article number	Article name	GTIN (EAN)	Packaging unit
3663.2	ZSLS 2,5/2A/2S GNYE	4044211177751	100 ST



Feed-through terminal, Tension-spring connection, Mounting type: Mounting rail TS 35/7.5, Rated cross-section: 2.5 mm², Width: 5.1 mm, Colour: Beige

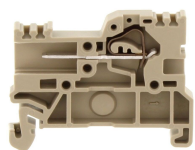
Article number	Article name	GTIN (EAN)	Packaging unit
3652.2	ZRKS 2,5/2A/1S BG	4044211177676	100

##INVERSE##CONTA-CONNECT



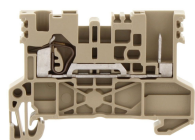
Feed-through terminal, Plug-in connection, Mounting type: Mounting rail TS 35/7.5, Width: 5.1 mm, Colour: Beige

Article number	Article name	GTIN (EAN)	Packaging unit
<u>3655.2</u>	ZRKS 2,5/2S BG	4044211177706	100



Feed-through terminal, Tension-spring connection, Mounting type: Mounting rail TS 35/7.5, Rated cross-section: 2.5 mm², Width: 5.1 mm, Colour: Beige

Article number	Article name	GTIN (EAN)	Packaging unit
<u>3675.2</u>	ZSTK 2,5/1A/1S-H/Z/35 BG	4044211177867	100



Feed-through terminal, Tension-spring connection, Mounting type: Mounting rail TS 35/7.5, Rated cross-section: 2.5 mm², Width: 5.1 mm, Colour: Beige

Article number	Article name	GTIN (EAN)	Packaging unit
<u>3650.2</u>	ZRKS 2,5/1A/1S BG	4044211177652	100



Feed-through terminal, Tension-spring connection, Mounting type: Mounting rail TS 35/7.5, Rated cross-section: 2.5 mm², Width: 5.1 mm, Colour: Beige

Article number	Article name	GTIN (EAN)	Packaging unit
<u>3651.2</u>	ZRKS 2,5/1A/2S BG	4044211177669	100



Protective earth terminal, Tension-spring connection, Mounting type: Mounting rail TS 35/7.5, Rated cross-section: 2.5 mm², Width: 5.1 mm, Colour: Green-yellow

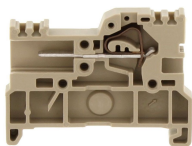
Article number	Article name	GTIN (EAN)	Packaging unit
<u>3661.2</u>	ZSLS 2,5/1A/2S GNYE	4044211177737	100 ST



Protective earth terminal, Plug-in connection, Mounting type: Mounting rail TS 35/7.5, Width: 5.1 mm, Colour: Green-yellow

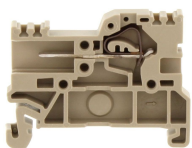
Article number	Article name	GTIN (EAN)	Packaging unit
<u>3664.2</u>	ZSLS 2,5/4S GNYE	4044211177768	100 ST

##INVERSE##CONTA-CONNECT



Feed-through terminal, Tension-spring connection, Mounting type: Mounting rail TS 35/7.5, Rated cross-section: 2.5 mm², Width: 5.1 mm, Colour: Beige

Article number	Article name	GTIN (EAN)	Packaging unit
<u>3667.2</u>	ZSTK 2,5/1A/1S-H/Z/B/35 BG	4044211177782	100



Feed-through terminal, Tension-spring connection, Mounting type: Mounting rail TS 35/7.5, Rated cross-section: 2.5 mm², Width: 5.1 mm, Colour: Beige

Article number	Article name	GTIN (EAN)	Packaging unit
<u>3674.2</u>	ZSTK 2,5/1A/1S-H/35 BG	4044211177850	100



Feed-through terminal, Plug-in connection, Mounting type: Mounting rail TS 35/7.5, Width: 5.1 mm, Colour: Beige

Article number	Article name	GTIN (EAN)	Packaging unit
<u>3654.2</u>	ZRKS 2,5/4S BG	4044211177690	100



Protective earth terminal, Tension-spring connection, Mounting type: Mounting rail TS 35/7.5, Rated cross-section: 2.5 mm², Width: 5.1 mm, Colour: Green-yellow

Article number	Article name	GTIN (EAN)	Packaging unit
<u>3660.2</u>	ZSLS 2,5/1A/1S GNYE	4044211177720	100 ST



Protective earth terminal, Tension-spring connection, Mounting type: Mounting rail TS 35/7.5, Rated cross-section: 2.5 mm², Width: 5.1 mm, Colour: Green-yellow

Article number	Article name	GTIN (EAN)	Packaging unit
<u>3662.2</u>	ZSLS 2,5/2A/1S GNYE	4044211177744	100 ST



Protective earth terminal, Plug-in connection, Mounting type: Mounting rail TS 35/7.5, Width: 5.1 mm, Colour: Green-yellow

Article number	Article name	GTIN (EAN)	Packaging unit
<u>3665.2</u>	ZSLS 2,5/2S GNYE	4044211177409	100 ST

##INVERSE##CONTA-CONNECT



Ex protective-earth terminal ATEX-certified Tension-spring connection, Mounting type: Mounting rail TS 35/7.5, Rated cross-section: 2.5 mm², Width: 5.1 mm, Colour: Green-yellow

Article number	Article name	GTIN (EAN)	Packaging unit
<u>1712.2</u>	ZSLN 2,5/3A Ex GNYE	4044211059668	100 ST



Protective earth terminal, Tension-spring connection, Mounting type: Mounting rail TS 35/7.5, Rated cross-section: 2.5 mm², Width: 5.1 mm, Colour: Green-yellow

Article number	Article name	GTIN (EAN)	Packaging unit
<u>3584.2</u>	ZSLN 2,5/2A GNYE	4044211151881	100 ST



Ex protective-earth terminal ATEX-certified Tension-spring connection, Mounting type: Mounting rail TS 35/7.5, Rated cross-section: 2.5 mm², Width: 5.1 mm, Colour: Green-yellow

Article number	Article name	GTIN (EAN)	Packaging unit
<u>1711.2</u>	ZSLN 2,5/2A Ex GNYE	4044211059347	100 ST



Protective earth terminal, Tension-spring connection, Mounting type: Mounting rail TS 35/7.5, Rated cross-section: 2.5 mm², Width: 5.1 mm, Colour: Green-yellow

Article number	Article name	GTIN (EAN)	Packaging unit
<u>3602.2</u>	ZSLN 2,5/3A GNYE	4044211152055	100 ST



Ex feed-through terminal ATEX-certified, Tension-spring connection, Mounting type: Mounting rail TS 35/7.5, Rated cross-section: 2.5 mm², Width: 5.1 mm, Colour: Beige

Article number	Article name	GTIN (EAN)	Packaging unit
<u>1702.2</u>	ZSRK 2,5/2A Ex BG	4044211059316	100



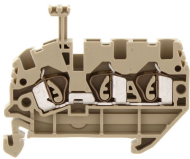
Feed-through terminal, Tension-spring connection, Mounting type: Mounting rail TS 35/7.5, Rated cross-section: 2.5 mm², Width: 5.1 mm, Colour: Beige

Article number	Article name	GTIN (EAN)	Packaging unit
<u>3583.2</u>	ZSRK 2,5/2A BG	4044211151874	100

Data sheet

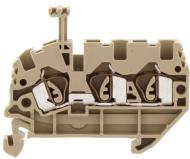
3811.2 ZES 35/2 BG

##INVERSE##CONTA-CONNECT



Ex feed-through terminal ATEX-certified, Tension-spring connection, Mounting type: Mounting rail TS 35/7.5, Rated cross-section: 2.5 mm², Width: 5.1 mm, Colour: Beige

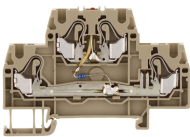
Article number	Article name	GTIN (EAN)	Packaging unit
<u>1703.2</u>	ZSRK 2,5/3A Ex BG	4044211059620	100



Feed-through terminal, Tension-spring connection, Mounting type: Mounting rail TS 35/7.5, Rated cross-section: 2.5 mm², Width: 5.1 mm, Colour: Beige

Article number	Article name	GTIN (EAN)	Packaging unit
<u>3600.2</u>	ZSRK 2,5/3A BG	4044211152031	100

##INVERSE##CONTA-CONNECT



Double-level terminal with electronic components, Push-in connection, Mounting type: Mounting rail TS 35/7.5, Rated cross-section: 2.5 mm², Width: 5.1 mm, Colour: Beige

Article number	Article name	GTIN (EAN)	Packaging unit
<u>3238.2</u>	FRKD 2,5/LED2(RD) 24V DC BG	4044211131883	100 ST