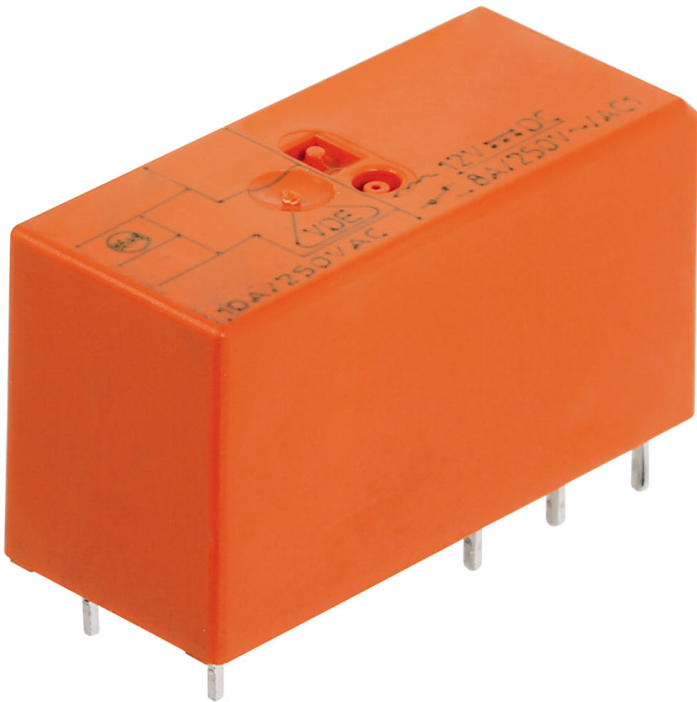


Data sheet

6483.2 PRS 2/24V DC



Plug-in miniature power relay, Encapsulated design with power contact, 2 CO contact, Input voltage: 24 VDC

Business data

Article number	6483.2
Article name	PRS 2/24V DC
GTIN (EAN)	4044211074227
Packaging unit	1
Quantity unit	PC
Weight per piece (not including packaging)	13.1 g
Weight per piece (including packaging)	46.2 g
Unit of weight	G
Customs number	85364900
Country of origin	AT
Product description	Relay, encapsulated construction

Technical data

Dimensions

Length	29 mm
Width	12.7 mm
Height	15.7 mm

Ratings

Overvoltage category	III
Contamination degree	3 (250 VAC) / 2 (400 VAC)

Input data

Working voltage	>16,8 VDC -
Drop-out voltage	2,4 VDC
Coil voltage	24 VDC -
Power consumption	0,4 W
Coil resistance	1440 Ohm

Output data

Switching voltage / switching voltage max.	250 / 400 VAC
Continuous current max. / Inrush current max.	8 / 15 A
Contact configuration	2 CO contacts
Switching capacity, max.	2000 VA
Electrical lifespan (AC1)	1x10 ⁵
Mechanical lifespan	30x10 ⁶
Bounce time at close of the NO/NC contact	8/6 ms

Materials

Contact material	AgNi 90/10
Working temperature, min.	-40 °C
Working temperature, max.	70 °C

Further technical data

Degree of protection	RTII
Insulation voltage coil/contact	5 kV
Response/release time	8 / 6 ms
Insulation voltage contact/contact	1 kV
Vibration resistance NO/NC	20/5 g
Pinning	5 mm

Data sheet

6483.2 PRS 2/24V DC



Technical data

Environmental Product Compliance

REACH Conform	yes
REACH Reference date	2023-06-14
REACH Candidate Substance Note	No
RoHS Conform	yes

Data sheet

6483.2 PRS 2/24V DC



Approvals

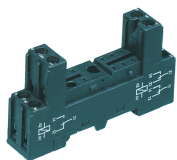
Standards and regulations

CE compliant	yes
--------------	-----

Media

Accessories

##INVERSE##CONTA-ELECTRONICS



Relay socket base PRS, for miniature power relay with 2 CO contacts, Screw connection, Plug-in option for input/suppression modules, Mounting type: Mounting rail TS 35

Article number	Article name	GTIN (EAN)	Packaging unit
<u>15136.2</u>	PRS 2	4044211046194	1 ST



Pre-assembled relay module PRS..., Screw connection, Consisting of: relay socket base, power contact relay, pluggable display/suppression module and holding clip, 2 CO contacts, Input voltage: 24 VDC

Article number	Article name	GTIN (EAN)	Packaging unit
<u>15233.2</u>	PRSU 2G/24V DC	4044211046736	10 ST



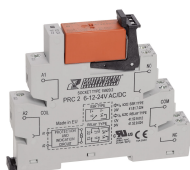
Relay socket base PRS, for miniature power relay with 2 CO contacts, Tension-spring connection, Plug-in option for input/suppression modules, Mounting type: Mounting rail TS 35

Article number	Article name	GTIN (EAN)	Packaging unit
<u>15789.2</u>	PRS 2 Z	4044211135256	1 ST



Relay socket base PRS, for miniature power relay with 2 CO contacts, Push-in connection, Plug-in option for input/suppression modules and cross connections, Mounting type: Mounting rail TS 35

Article number	Article name	GTIN (EAN)	Packaging unit
<u>16503.2</u>	PPRS 2	4044211236298	20 ST



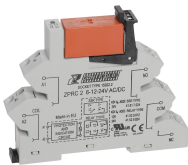
Plug-Relay-Compact (PRC) Complete, Consisting of base PRC... with screw connection and pluggable miniature relay PRS... with power contact, Mounting type: Mounting rail TS 35, 2 CO contacts, Input voltage: 24 VAC/DC

Article number	Article name	GTIN (EAN)	Packaging unit
<u>15925.2</u>	PRCU 2 24V AC/DC	4044211137434	10 ST

Data sheet

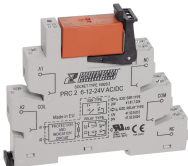
6483.2 PRS 2/24V DC

##INVERSE##CONTA-ELECTRONICS



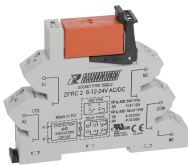
Plug-Relay-Compact (PRC) Complete, Consisting of base PRC... with tension-spring connection and pluggable miniature relay PRS... with power contact, Mounting type: Mounting rail TS 35, 2 CO contacts, Input voltage: 24 VAC/DC

Article number	Article name	GTIN (EAN)	Packaging unit
<u>15928.2</u>	ZPRCU 2 24V AC/DC	4044211137465	10 ST



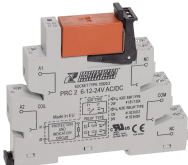
Plug-Relay-Compact (PRC) socket base PRC with screw connection, Mounting type: Mounting rail TS 35, 2 CO contact, Input voltage: 6.12 or 24 VAC/DC

Article number	Article name	GTIN (EAN)	Packaging unit
<u>15920.2</u>	PRC 2 6-12-24V AC/DC	4044211137359	10 ST



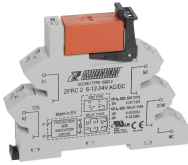
Plug-Relay-Compact (PRC) socket base PRC with tension-spring connection, Mounting type: Mounting rail TS 35, 2 CO contact, Input voltage: 6, 12 or 24 VAC/DC

Article number	Article name	GTIN (EAN)	Packaging unit
<u>15922.2</u>	ZPRC 2 6-12-24V AC/DC	4044211137373	10 ST



Plug-Relay-Compact (PRC) Complete, Consisting of base PRC... with screw connection and pluggable miniature relay PRS... with power contact, Mounting type: Mounting rail TS 35, 2 CO contacts, Input voltage: 24 VAC/DC

Article number	Article name	GTIN (EAN)	Packaging unit
<u>15925.2</u>	PRCU 2 24V AC/DC	4044211137434	10 ST



Plug-Relay-Compact (PRC) Complete, Consisting of base PRC... with tension-spring connection and pluggable miniature relay PRS... with power contact, Mounting type: Mounting rail TS 35, 2 CO contacts, Input voltage: 24 VAC/DC

Article number	Article name	GTIN (EAN)	Packaging unit
<u>15928.2</u>	ZPRCU 2 24V AC/DC	4044211137465	10 ST

Data sheet

6483.2 PRS 2/24V DC

##INVERSE##CONTA-ELECTRONICS



Relay socket base PRS, for miniature power relay with 2 CO contacts, Push-in connection, Plug-in option for input/suppression modules and cross connections, Mounting type: Mounting rail TS 35

Article number	Article name	GTIN (EAN)	Packaging unit
<u>16503.2</u>	PPRS 2	4044211236298	20 ST