

Solid-state output module for G4 SSR relay, Screw connection, Mounting type: Mounting rail TS 35, 1 channel, Delivered without SSR relay

### Business data

Article number	<u>7783.2</u>
Article name	SSOIF 1
GTIN (EAN)	4044211078010
Packaging unit	5
Quantity unit	PC
Weight per piece (not including packaging)	28.5 g
Weight per piece (including packaging)	40.02 g
Unit of weight	G
Customs number	85365003
Country of origin	NL
Product description	Solid-state output module

### Technical data

#### Dimensions

Length	87 mm
Width	18 mm
Height	57 mm

#### Ratings

Overvoltage category	III
Contamination degree	2

#### Connection data

Connection principle	Screw connection
Wire cross-section single core (rigid), min.	0.2 mm <sup>2</sup>
Wire cross-section single-core (rigid), max.	4 mm <sup>2</sup>
Wire cross-section stranded, min.	0.2 mm <sup>2</sup>
Wire cross-section stranded, max.	2.5 mm <sup>2</sup>
Wire cross-section stranded with wire-end ferrules, min.	0.2 mm <sup>2</sup>
Wire cross-section stranded with wire-end ferrules, max.	2.5 mm <sup>2</sup>
Stripping length	7 mm
Torque	0.6 Nm

#### Input data

Number of channels	1
--------------------	---

#### Materials

Working temperature, min.	-20 °C
Working temperature, max.	55 °C

#### Further technical data

Test voltage	4 kV
--------------	------

#### Environmental Product Compliance

REACH Conform	Yes
REACH Reference date	2024-06-27
REACH Candidate Substance Note	No
RoHS Conform	Yes

---

### Approvals

---

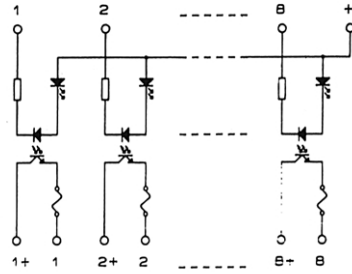
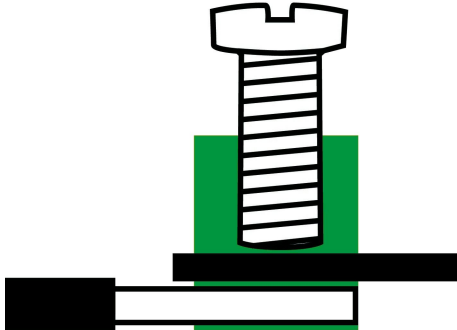
#### Standards and regulations

---

CE directives and standards	Low-Voltage Directive 2014/35/EU, in compliance with EN 61010-1 and EN 62477-1 EMC Directive 2014/30/EC, in compliance with EN 55011 and EN 61326-1
UKCA guidelines and standards	Electrical Equipment (Safety) Regulations 2016 (S.I. 2016/1101), in compliance with EN 61010-1 and EN 62477-1 EMC Regulations 2016 (S.I. 2016/1091), in compliance with EN 55011 and EN 61326-1
Standards / specifications	DIN VDE 0110 / EN 50178

---

### Media



---

### Accessories

---