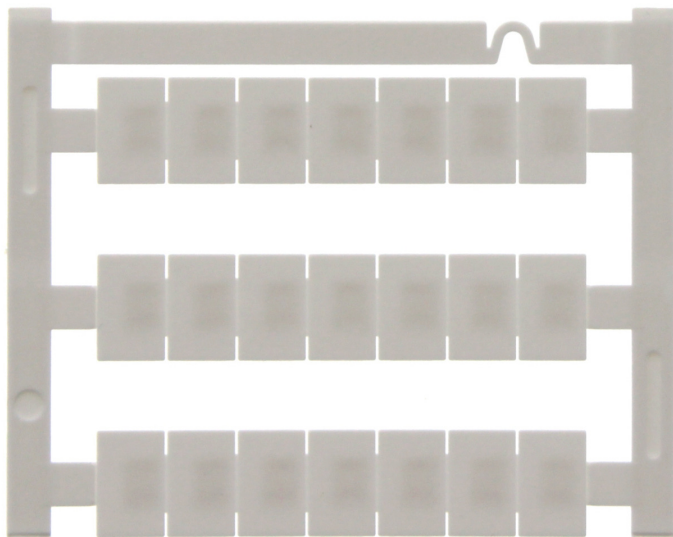


9410.7 PMC BSTR 8x12/21 WH



Terminal marker / Pocket Maxicard, Length: 12 mm, Width: 8 mm, Colour: White

RAL: 9010

Business data

Article number	9410.7
Article name	PMC BSTR 8x12/21 WH
GTIN (EAN)	4044211154998
Packaging unit	210
Quantity unit	PC
Number of markers per card	21 ST
Number of markers per row	7 ST
Weight per piece (not including packaging)	0.31 g
Weight per piece (including packaging)	0.44 g
Unit of weight	G
Customs number	39269097
Country of origin	DE
Product description	Terminal marker / Pocket Maxicard
Colour	White

9410.7 PMC BSTR 8x12/21 WH

Technical data

Dimensions

Length	12 mm
Width	8 mm
Terminal width	≥ 8,00 mm

Materials

Marker material	Polyamide 6.6
Flammability class UL 94	V-2
Working temperature, min.	-40 °C
Working temperature, max.	105 °C
Halogen-free	✓

Print

Printing process	Thermal transfer
Number of characters, horizontal	6
Rows when using font size 1.4 and plotter pen 0.25, horizontally aligned text	5
Number of characters, vertical	9
Rows when using font size 1.4 and plotter pen 0.25, vertically aligned text	4

Environmental Product Compliance

REACH Conform	yes
REACH Reference date	2024-01-23
REACH Candidate Substance Note	No
RoHS Conform	yes

Media

Accessories

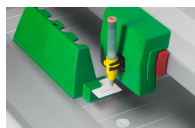
Labelling pen



Labelling pen for manual writing, Water resistant and smudge-proof, Line width 0.4 mm, Ink colour: Black

Article number	Article name	GTIN (EAN)	Packaging unit
<u>2034.0</u>	BS-1	4044211048365	10 ST

Plotter



Plotter marking system

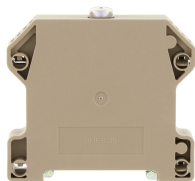
Article number	Article name	GTIN (EAN)	Packaging unit
<u>1610.0</u>	EMS-3 Easy-Marking-System DIN A3	4044211103187	1 ST

##INVERSE##CONTA-CONNECT



End stop, Mounting type: Mounting rail TS 35/7.5 and TS 35/15, Width: 8 mm, Colour: Beige

Article number	Article name	GTIN (EAN)	Packaging unit
<u>17250.2</u>	SES 35 BG	4044211178253	50



End stop, Mounting type: Mounting rail TS 35/7.5 and TS 35/15, Width: 13.4 mm, Colour: Beige

Article number	Article name	GTIN (EAN)	Packaging unit
<u>17259.2</u>	SHES 35 BG	4044211190903	20 ST

##INVERSE##CONTA-CON

9410.7 PMC BSTR 8x12/21 WH



Feed-through terminal, Screw connection, Mounting type: Mounting surface, Rated cross-section: 4 mm², Colour: Grey

Article number	Article name	GTIN (EAN)	Packaging unit
<u>17380.6</u>	SDK 4/2A GR	4044211199227	50 ST



Feed-through terminal, Screw connection, Mounting type: Mounting surface, Rated cross-section: 4 mm², Colour: Grey

Article number	Article name	GTIN (EAN)	Packaging unit
<u>17381.6</u>	SDK 4/2A/Z GR	4044211199234	50 ST



Feed-through terminal, Screw connection, Mounting type: Mounting surface, Rated cross-section: 4 mm², Colour: Grey

Article number	Article name	GTIN (EAN)	Packaging unit
<u>17382.6</u>	SDK 4/1A/1L GR	4044211199241	50 ST



Feed-through terminal, Screw connection, Mounting type: Mounting surface, Rated cross-section: 4 mm², Colour: Grey

Article number	Article name	GTIN (EAN)	Packaging unit
<u>17383.6</u>	SDK 4/1A/1L/Z GR	4044211206277	50 ST