

Feed-through terminal, Screw connection, Mounting type: Mounting rail TS 35/7.5 and TS 32, Rated cross-section: 4 mm², Width: 6 mm, Colour: Beige

Business data

| | |
|--|-----------------------|
| Article number | <u>1001.2</u> |
| Article name | RK 2,5-4 BG |
| GTIN (EAN) | 4044211000240 |
| Packaging unit | 100 |
| Quantity unit | PC |
| Weight per piece (not including packaging) | 9.8 g |
| Weight per piece (including packaging) | 10.42 g |
| Unit of weight | G |
| Customs number | 85369010 |
| Country of origin | CZ |
| Prio-Article | 1001.2 |
| Product description | Feed-through terminal |

Data sheet

1001.2 RK 2,5-4 BG

Technical data

Dimensions

| | |
|------------------|---------|
| Length | 48 mm |
| Width | 6 mm |
| Height TS 35/7.5 | 47 mm |
| Height TS 32 | 51.5 mm |

Ratings

| | |
|---|-------------------|
| Rated voltage | 800 V |
| Rated current | 32 A |
| Rated cross-section | 4 mm ² |
| Rated impulse voltage | 8 kV |
| Overvoltage category | III |
| Contamination degree | 3 |
| Maximum power dissipation for nominal condition | 1.02 W |

Connection data

| | |
|--|---------------------|
| Connection principle | Screw connection |
| Connection position | Lateral |
| Connections | 2 |
| Number of terminals per level | 2 |
| Number of levels | 1 |
| Wire cross-section single-core (rigid) / stranded, min. | 0.2 mm ² |
| Wire cross-section single core (rigid)/stranded, max. | 6 mm ² |
| Wire cross-section stranded, min. | 0.2 mm ² |
| Wire cross-section stranded, max. | 6 mm ² |
| Wire cross-section stranded with wire-end ferrules, min. | 0.2 mm ² |
| Wire cross-section stranded with wire-end ferrules, max. | 4 mm ² |
| Wire cross-section AWG, min. | 22 |
| Wire cross-section AWG, max. | 11 |
| Stripping length | 12 mm |
| Screw head | Slotted |
| Screw threading | M 3 |
| Tightening torque, min. | 0.5 Nm |
| Tightening torque, max. | 1 Nm |

Data sheet

1001.2 RK 2,5-4 BG

Technical data

Materials

| | |
|---------------------------|---------------|
| Insulation housing | Polyamide 6.6 |
| Flammability class UL 94 | V-2 |
| Working temperature, min. | -40 °C |
| Working temperature, max. | 105 °C |

Further technical data

| | |
|-------------------------------------|-----------------------------------|
| Mounting type | Mounting rail TS 35/7.5 and TS 32 |
| Gauge plug acc. to EN 60 947-1 | A4 |
| Number of cross-connection channels | 1 |
| End plate required | ✓ |
| Number of test pick-off options | 1 |

Environmental Product Compliance

| | |
|--------------------------------|------------------------|
| REACH Conform | Yes, yes |
| REACH Reference date | 2023-06-14, 2024-01-23 |
| REACH Candidate Substance Note | No |
| RoHS Conform | yes |

Data sheet

1001.2 RK 2,5-4 BG

Approvals

Standards and regulations

| | |
|--------------|----------------|
| EAC approval | TR ZU 004/2011 |
|--------------|----------------|

| | |
|----------------------|-----|
| EAC approval granted | yes |
|----------------------|-----|

CSA approval

| | |
|--------------|--------------|
| CSA approval | C22.2 No 158 |
|--------------|--------------|

| | |
|----------------------|-----|
| CSA approval granted | yes |
|----------------------|-----|

| | |
|-------------------------------|-------|
| CSA Usegroup C: rated voltage | 600 V |
|-------------------------------|-------|

| | |
|-------------------------------|------|
| CSA Usegroup C: rated current | 40 A |
|-------------------------------|------|

| | |
|----------------------------------|----|
| CSA wire cross-section AWG, min. | 22 |
|----------------------------------|----|

| | |
|----------------------------------|----|
| CSA wire cross-section AWG, max. | 10 |
|----------------------------------|----|

| | |
|----------------------|-------|
| CSA stripping length | 12 mm |
|----------------------|-------|

| | |
|------------------|------|
| CSA torque, max. | 1 Nm |
|------------------|------|

| | |
|------------------|--------|
| CSA torque, min. | 0.5 Nm |
|------------------|--------|

| | |
|-----------------|--------------|
| CSA File Number | 042110_0_000 |
|-----------------|--------------|

KEMA KEUR approval

| | |
|--------------------|-------------------|
| KEMA KEUR approval | EN 60947-7-1:2009 |
|--------------------|-------------------|

| | |
|----------------------------|-----|
| KEMA KEUR approval granted | yes |
|----------------------------|-----|

| | |
|--------------------|-------|
| KEMA rated voltage | 800 V |
|--------------------|-------|

| | |
|--------------------|------|
| KEMA rated current | 32 A |
|--------------------|------|

| | |
|----------------------------|------|
| KEMA rated impulse voltage | 6 kV |
|----------------------------|------|

| | |
|---|---------------------|
| KEMA wire cross-section single core (rigid), min. | 0.2 mm ² |
|---|---------------------|

| | |
|---|-------------------|
| KEMA wire cross-section single-core (rigid), max. | 4 mm ² |
|---|-------------------|

| | |
|--|---------------------|
| KEMA wire cross-section stranded, min. | 0.2 mm ² |
|--|---------------------|

| | |
|--|-------------------|
| KEMA wire cross-section stranded, max. | 4 mm ² |
|--|-------------------|

| | |
|-------------------|--------|
| KEMA torque, min. | 0.5 Nm |
|-------------------|--------|

| | |
|-------------------|------|
| KEMA torque, max. | 1 Nm |
|-------------------|------|

Data sheet

1001.2 RK 2,5-4 BG

Approvals

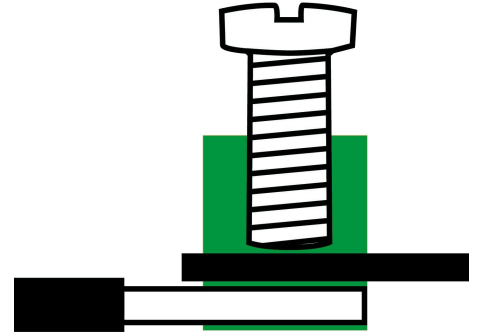
UL Recognized

| | |
|---|-----------|
| UL approval | UL 1059 |
| UL Usegroup C: rated voltage | 600 V |
| UL Usegroup C: rated current | 30 A |
| UL wire cross-section single-core (rigid) AWG, min. | 22 |
| UL wire cross-section single-core (rigid) AWG, max. | 10 |
| UL wire cross-section stranded AWG, min. | 22 |
| UL wire cross-section stranded AWG, max. | 10 |
| UL torque | 7.3 Lb In |
| UL wire material | Cu |
| UL factory wiring | 1 |
| UL field wiring | 1 |
| UL File Number | E95701 |
| UL Recognized | 1 |

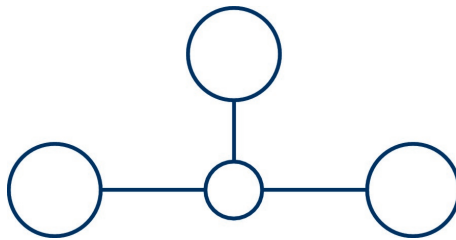
German Lloyd approval

| | |
|----------------------------|---|
| DNV GL Certificate number | TAE000014T |
| DNV GL Location Classes | Temperature: B, Humidity: B, Vibration: A |
| DNV GL approval granted | 1 |
| DNV GL rated cross-section | 4 mm ² |
| DNV GL rated current | 34 A |
| DNV GL rated voltage | 750 V |
| DNV GL test standard | IEC 60947-7-1:2002 |

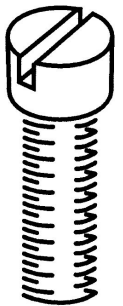
Media



EAC



M3



Accessories

Cover



Cover, Length: 24 mm, Width: 24 mm, Colour: Yellow

| Article number | Article name | GTIN (EAN) | Packaging unit |
|----------------|----------------|---------------|----------------|
| <u>2494.0</u> | AD 4/24/B/E YE | 4044211052959 | 50 ST |



Cover, Length: 24 mm, Width: 24 mm, Colour: Yellow

| Article number | Article name | GTIN (EAN) | Packaging unit |
|----------------|--------------|---------------|----------------|
| <u>2011.0</u> | AD 4/24/B YE | 4044211048143 | 50 ST |



Cover, Length: 24 mm, Width: 20 mm, Colour: Yellow

| Article number | Article name | GTIN (EAN) | Packaging unit |
|----------------|----------------|---------------|----------------|
| <u>2493.0</u> | AD 4/24/B/E YE | 4044211052942 | 50 ST |



Cover, Length: 26.5 mm, Width: 6 mm, Colour: Yellow

| Article number | Article name | GTIN (EAN) | Packaging unit |
|----------------|--------------|---------------|----------------|
| <u>2953.0</u> | AD 1/6/B YE | 4044211056810 | 50 ST |



Cover, Length: 26.5 mm, Width: 6 mm, Colour: White

| Article number | Article name | GTIN (EAN) | Packaging unit |
|----------------|--------------|---------------|----------------|
| <u>2965.0</u> | AD 1/6 WH | 4044211056940 | 50 ST |



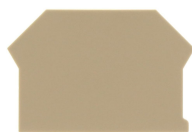
Cover, Length: 24 mm, Width: 20 mm, Colour: Yellow

| Article number | Article name | GTIN (EAN) | Packaging unit |
|----------------|--------------|---------------|----------------|
| <u>2079.0</u> | AD 4/24/B YE | 4044211048877 | 50 ST |

End plate

Data sheet

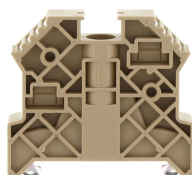
1001.2 RK 2,5-4 BG



End plate, Width: 1.5 mm, Colour: Beige

| Article number | Article name | GTIN (EAN) | Packaging unit |
|----------------|--------------|---------------|----------------|
| <u>2001.2</u> | AP 2,5-10 BG | 4044211047979 | 50 |

End stop



End stop, Mounting type: Mounting rail TS 35/7.5, Width: 9.5 mm, Colour: Beige

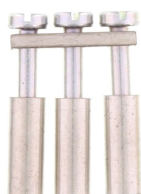
| Article number | Article name | GTIN (EAN) | Packaging unit |
|----------------|---------------|---------------|----------------|
| <u>2828.0</u> | ES 35/K/ST BG | 4044211055547 | 50 |



End stop, Mounting type: Mounting rail TS 35/7.5, Width: 7.5 mm, Colour: Beige

| Article number | Article name | GTIN (EAN) | Packaging unit |
|----------------|--------------|---------------|----------------|
| <u>2005.2</u> | ES 35 BG | 4044211048082 | 50 |

Cross-connector



Cross-connector, No. of poles: 3, Mounting type: Can be screwed on, Width: 17 mm, Rated cross-section: 4 mm², Colour: natural

| Article number | Article name | GTIN (EAN) | Packaging unit |
|----------------|--------------|---------------|----------------|
| <u>2020.0</u> | Q 3 | 4044211048235 | 50 ST |



Cross-connector, No. of poles: 2, Mounting type: Can be screwed on, Width: 10.9 mm, Rated cross-section: 4 mm², Colour: natural

| Article number | Article name | GTIN (EAN) | Packaging unit |
|----------------|--------------|---------------|----------------|
| <u>2019.0</u> | Q 2 | 4044211048228 | 50 ST |



Cross-connector, No. of poles: 4, Mounting type: Can be screwed on, Width: 23.1 mm, Rated cross-section: 4 mm², Colour: natural

| Article number | Article name | GTIN (EAN) | Packaging unit |
|----------------|--------------|---------------|----------------|
| <u>2021.0</u> | Q 4 | 4044211048242 | 20 ST |

Cross-connector



Cross-connector, No. of poles: 10, Mounting type: Can be screwed on, Width: 59.7 mm, Rated cross-section: 4 mm², Colour: natural

| Article number | Article name | GTIN (EAN) | Packaging unit |
|----------------|--------------|---------------|----------------|
| <u>2022.0</u> | Q 10 | 4044211048259 | 10 ST |

Insulated cross-connector



Insulated cross-connector, No. of poles: 4, Mounting type: Can be screwed on, Width: 21.9 mm, Colour: Yellow

| Article number | Article name | GTIN (EAN) | Packaging unit |
|----------------|--------------|---------------|----------------|
| <u>2742.2</u> | QI 4 YE | 4044211054823 | 20 ST |



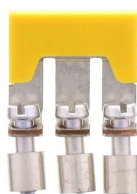
Insulated cross-connector, No. of poles: 10, Mounting type: Can be screwed on, Width: 59.7 mm, Colour: Yellow

| Article number | Article name | GTIN (EAN) | Packaging unit |
|----------------|--------------|---------------|----------------|
| <u>2743.2</u> | QI 10 YE | 4044211054830 | 10 ST |



Insulated cross-connector, No. of poles: 2, Mounting type: Can be screwed on, Width: 10.4 mm, Colour: Yellow

| Article number | Article name | GTIN (EAN) | Packaging unit |
|----------------|--------------|---------------|----------------|
| <u>2740.2</u> | QI 2 YE | 4044211054809 | 50 ST |



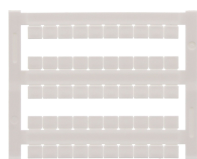
Insulated cross-connector, No. of poles: 3, Mounting type: Can be screwed on, Width: 16.5 mm, Colour: Yellow

| Article number | Article name | GTIN (EAN) | Packaging unit |
|----------------|--------------|---------------|----------------|
| <u>2741.2</u> | QI 3 YE | 4044211054816 | 50 ST |

Quick marking

Data sheet

1001.2 RK 2,5-4 BG



Terminal marker / Pocket Maxicard, Length: 5 mm, Width: 6 mm, Colour: White

| Article number | Article name | GTIN (EAN) | Packaging unit |
|----------------|----------------|---------------|----------------|
| <u>4702.7</u> | PMC SB 6/50 WH | 4044211089986 | 500 ST |

Screwdriver

Screwdriver with bare blade, Colour: Black-grey



| Article number | Article name | GTIN (EAN) | Packaging unit |
|----------------|--------------|---------------|----------------|
| <u>1086.0</u> | SDB 0,6x3,5 | 4044211014797 | 1 ST |

Test adapters



Test adapter, Length: 37.3 mm, Pitch size: 6 mm, Colour: Beige

| Article number | Article name | GTIN (EAN) | Packaging unit |
|----------------|--------------|---------------|----------------|
| <u>2813.0</u> | TA 6/1/ST | 4044211055400 | 10 ST |

Insulation plate



Insulation plate, Colour: Beige

| Article number | Article name | GTIN (EAN) | Packaging unit |
|----------------|--------------|---------------|----------------|
| <u>2003.2</u> | TRS 1 BG | 4044211048068 | 100 |

Partition plate



Partition plate, Width: 1.5 mm, Colour: Beige

| Article number | Article name | GTIN (EAN) | Packaging unit |
|----------------|--------------|---------------|----------------|
| <u>2002.2</u> | TW 2,5-10 BG | 4044211048044 | 50 |

Data sheet

1001.2 RK 2,5-4 BG

##INVERSE##CONTA-CONNECT



Test adapter, Length: 37.3 mm, Pitch size: 6 mm, Colour: Beige

| Article number | Article name | GTIN (EAN) | Packaging unit |
|----------------|--------------|---------------|----------------|
| <u>2813.0</u> | TA 6/1/ST | 4044211055400 | 10 ST |