

AC / DC Regulated power supply, Screw connection, Mounting type: TS 35, Input: 1-phase, Output: 12 VDC / 1.5 A

### Business data

Article number	<u>15025.2</u>
Article name	ACDCG/12 -1,5
GTIN (EAN)	4044211045753
Packaging unit	1
Quantity unit	PC
Weight per piece (not including packaging)	149.7 g
Weight per piece (including packaging)	184.2 g
Unit of weight	G
Customs number	85044082
Country of origin	EEC
Product description	Converter module

### Technical data

#### Dimensions

Length	54 mm
Width	87 mm
Height TS 35/7.5	87 mm

#### Ratings

Overvoltage category	III
Contamination degree	2

#### Connection data

Connection principle	Screw connection
Wire cross-section single core (rigid), min.	0.2 mm <sup>2</sup>
Wire cross-section single-core (rigid), max.	4 mm <sup>2</sup>
Wire cross-section stranded, min.	0.2 mm <sup>2</sup>
Wire cross-section stranded, max.	2.5 mm <sup>2</sup>
Wire cross-section stranded with wire-end ferrules, min.	0.2 mm <sup>2</sup>
Wire cross-section stranded with wire-end ferrules, max.	2.5 mm <sup>2</sup>
Stripping length	7 mm
Torque	0.6 Nm

#### Input data

Input voltage AC min.	13 V
Input voltage AC max.	25 V
Input voltage DC min.	14,5 V
Input voltage DC max.	35 V
Input frequency min.	50 Hz
Input frequency max.	60 Hz
Power consumption AC	31 VA @ 13 V
Power consumption DC	28 W @ 16 V

#### Output data

Output voltage DC	12 V
Regulated DC voltage	✓
Output current	1.5 A
Residual ripple	<50 pp mV

---

### Technical data

---

#### Materials

Working temperature, min.	-20 °C
---------------------------	--------

Working temperature, max.	50 °C
---------------------------	-------

#### Further technical data

Protection class	IP00
------------------	------

Status display	✓
----------------	---

Short-circuit resistant	✓
-------------------------	---

Derating	See diagram %
----------	---------------

### Approvals

---

#### Standards and regulations

---

CE compliant

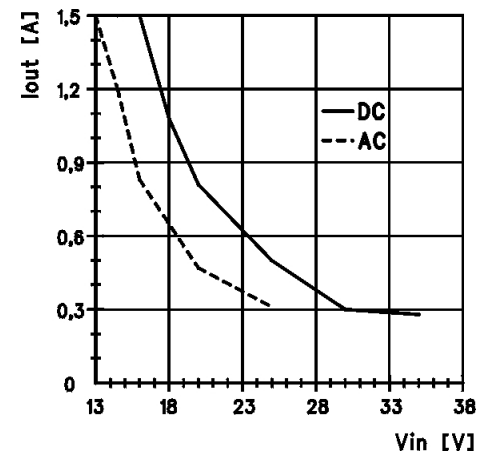
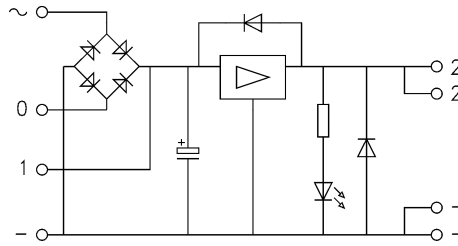
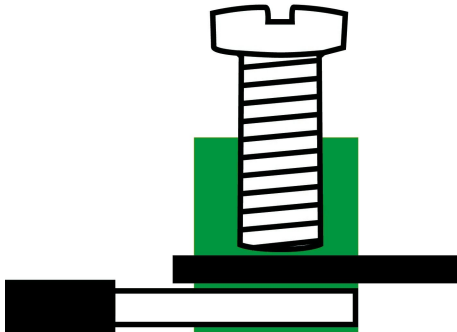
yes

Standards / specifications

DIN EN 50178 / DIN VDE 0110

---

### Media



---

### Accessories

---