

Digital switching module with manual-off-automatic switching, With feedback loop and watchdog, Screw connection, Mounting type: Mounting rail TS 35, Voltage: 24VAC/DC

### Business data

Article number	<u>15042.2</u>
Article name	HLSW-3
GTIN (EAN)	4044211134440
Packaging unit	1
Quantity unit	PC
Weight per piece (not including packaging)	190 g
Weight per piece (including packaging)	248 g
Unit of weight	G
Customs number	85364900
Country of origin	NL
Product description	Digital switching module

### Technical data

#### Dimensions

Length	90 mm
Width	87 mm
Height TS 35 / 7.5 with BA	63 mm

#### Ratings

Overvoltage category	III
Contamination degree	2

#### Connection data

Connection principle	Screw connection
Wire cross-section single core (rigid), min.	0.08 mm <sup>2</sup>
Wire cross-section single-core (rigid), max.	4 mm <sup>2</sup>
Wire cross-section stranded, min.	0.2 mm <sup>2</sup>
Wire cross-section stranded, max.	2.5 mm <sup>2</sup>
Wire cross-section stranded with wire-end ferrules, min.	0.2 mm <sup>2</sup>
Wire cross-section stranded with wire-end ferrules, max.	2.5 mm <sup>2</sup>
Stripping length	7 mm
Torque	0.6 Nm

#### Input data

Power supply AC/DC	24 V
Number of channels	2
Input signal U/I, max.	24 VAC/DC
Power consumption	0.5 W

#### Output data

Switching voltage, max.	250
Continuous current max. / Inrush current max.	6 / 8 A
Switching capacity, max.	2000 VA
Electrical lifespan (AC1)	1,5x10 <sup>5</sup>
Mechanical lifespan	10x10 <sup>6</sup>

#### Materials

Contact material	AgNi 90/10
Working temperature, min.	-20 °C
Working temperature, max.	50 °C
Switch contact material	AgAu

### Technical data

#### Further technical data

Protection class	IP20
Response/release time	20 / 100 ms
Remarks	High/low switching module with 3 separate status inputs
Manual/Off/Automatic switching	✓
Feedback loop	✓
Operating voltage indicator LED	✓
Voltage/current switch, max.	24 / 2 V / A
Mechanical service life of switch	>1x10 <sup>5</sup> Schaltspiele
Watchdog input	✓

#### Environmental Product Compliance

REACH Conform	yes
REACH Reference date	2024-01-23
REACH Candidate Substance Note	No
RoHS Conform	yes

# Data sheet

## 15042.2 HLSW-3



---

### Approvals

---

#### Standards and regulations

---

CE compliant

yes

---

Standards / specifications

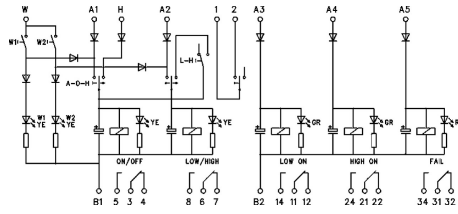
DIN VDE 0110 / EN 50178

---

# Data sheet

## 15042.2 HLSW-3

### Media



---

### Accessories

---