



Plug-in miniature power relay, Encapsulated design with power contact, 1 CO contact, Input voltage: 115 VAC

Business data

Article number	<u>15228.2</u>
Article name	PRS 1/115V AC
GTIN (EAN)	4044211046705
Packaging unit	1
Quantity unit	PC
Weight per piece (not including packaging)	14 g
Weight per piece (including packaging)	15.1 g
Unit of weight	G
Customs number	85364900
Country of origin	EU
Product description	Relay, encapsulated construction

Technical data

Dimensions

Length	29 mm
Width	12.7 mm
Height	15.7 mm

Ratings

Overvoltage category	III
Contamination degree	3

Input data

Working voltage	>86,3 VAC -
Drop-out voltage	17,3 VAC
Coil voltage	115 VAC -
Power consumption	0,76 W
Coil resistance	8100 Ohm

Output data

Switching voltage / switching voltage max.	250 / 400 VAC
Continuous current max. / Inrush current max.	12 / 25 A
Contact configuration	1 CO contact
Switching capacity, max.	3000 VA
Electrical lifespan (AC1)	1,2x10 ⁵
Mechanical lifespan	10x10 ⁶

Materials

Contact material	AgNi 90/10
Working temperature, min.	-40 °C
Working temperature, max.	70 °C

Further technical data

Degree of protection	RTII (flux proof)
Insulation voltage coil/contact	5 kV
Response/release time	7 / 3 ms
Insulation voltage contact/contact	1 kV
Vibration resistance NO/NC	20/5 g
Pinning	3.5 mm

Technical data

Environmental Product Compliance

REACH Conform	yes
REACH Reference date	2024-01-23
REACH Candidate Substance Note	No
RoHS Conform	yes

Data sheet

15228.2 PRS 1/115V AC



Approvals

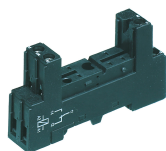
Standards and regulations

CE compliant	yes
--------------	-----

Media

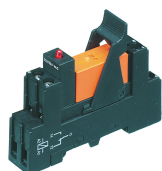
Accessories

##INVERSE##CONTA-ELECTRONICS



Relay socket base PRS, for miniature power relay with 1 CO contact, Screw connection, Plug-in option for input/suppression modules, Mounting type: Mounting rail TS 35

Article number	Article name	GTIN (EAN)	Packaging unit
<u>15135.2</u>	PRS 1	4044211046187	1 ST



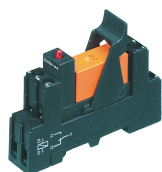
Pre-assembled relay module PRS..., Screw connection, Consisting of: relay socket base, power contact relay, pluggable display/suppression module and holding clip, 1 CO contact, Input voltage: 115 VAC

Article number	Article name	GTIN (EAN)	Packaging unit
<u>15418.2</u>	PRSU 1/115V AC	4044211080754	1 ST



Pre-assembled relay module PRS..., Tension-spring connection, Consisting of: relay socket base, power contact relay, pluggable display/suppression module and holding clip, 1 CO contact, Input voltage: 115 VAC

Article number	Article name	GTIN (EAN)	Packaging unit
<u>15786.2</u>	PRSU 1Z/115V AC	4044211135317	1 ST



Pre-assembled relay module PRS..., Screw connection, Consisting of: relay socket base, power contact relay, pluggable display/suppression module and holding clip, 1 CO contact, Input voltage: 115 VAC

Article number	Article name	GTIN (EAN)	Packaging unit
<u>15418.2</u>	PRSU 1/115V AC	4044211080754	1 ST