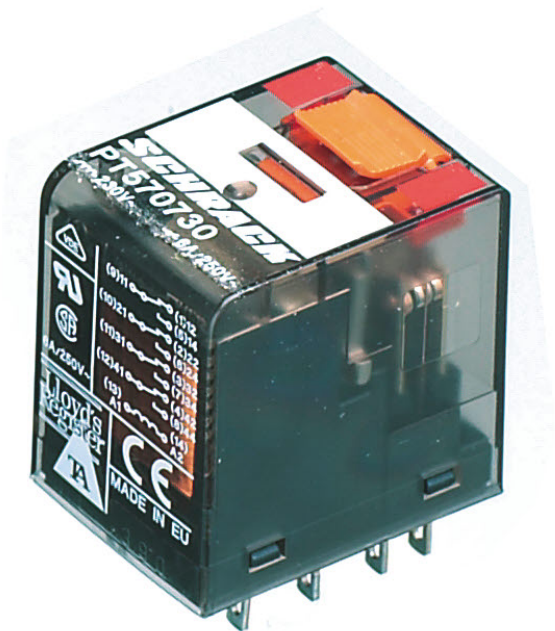


# Data sheet

## 15393.2 PRS 4/12V AC



Plug-in industrial relays with power contacts, 4 CO contacts, Test button, Mechanical switching position indicator, Input voltage: 12 VAC

### Business data

Article number	15393.2
Article name	PRS 4/12V AC
GTIN (EAN)	4044211104290
Packaging unit	1
Quantity unit	PC
Weight per piece (not including packaging)	13.4 g
Weight per piece (including packaging)	15 g
Unit of weight	G
Customs number	85364110
Country of origin	AT
Product description	Relay, opened design

### Technical data

#### Dimensions

Length	28 mm
Width	22.5 mm
Height	29 mm

#### Ratings

Overvoltage category	III
Contamination degree	2

#### Input data

Working voltage	>9,6 VAC -
Drop-out voltage	3,6 VAC
Coil voltage	12 VAC -
Power consumption	0,85 W
Coil resistance	48 Ohm

#### Output data

Switching voltage / switching voltage max.	240 / 240 VAC
Continuous current max. / Inrush current max.	6 / 12 A
Contact configuration	4 CO contacts
Switching capacity, max.	1500 VA
Mechanical lifespan	20x10 <sup>6</sup>
Contact load, min.	120 mW
Bounce time at close of the NO/NC contact	6/8 ms

#### Materials

Contact material	AgNi 90/10
Working temperature, min.	-40 °C
Working temperature, max.	70 °C

#### Further technical data

Degree of protection	RTII (flux proof)
Insulation voltage coil/contact	2,5 kV
Insulation voltage contact/contact	1,2 kV
Mechanical indicator	✓
Test button	✓
Vibration resistance NO/NC	7/4 g
Shock resistance NO/NC	20/5 g
Pinning	2,8 (AMP) mm

# Data sheet

## 15393.2 PRS 4/12V AC



### Technical data

#### Environmental Product Compliance

REACH Conform	yes
REACH Reference date	2023-06-14
REACH Candidate Substance Note	No
RoHS Conform	yes

# Data sheet

## 15393.2 PRS 4/12V AC



---

### Approvals

---

#### Standards and regulations

---

CE compliant	yes
--------------	-----

---

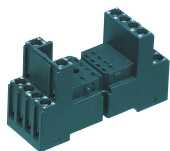
---

Media

---

### Accessories

#### ##INVERSE##CONTA-ELECTRONICS



Relay socket base PRS, for industrial relay with 4 CO contacts, Screw connection, Plug-in option for input/suppression modules, Mounting type: Mounting rail TS 35

Article number	Article name	GTIN (EAN)	Packaging unit
<u>15137.2</u>	PRS 4	4044211046200	1 ST



Relay socket base PRS, for industrial relay with 4 CO contacts, Screw connection, Plug-in option for input/suppression modules, Mounting type: Mounting rail TS 35

Article number	Article name	GTIN (EAN)	Packaging unit
<u>15324.2</u>	PRS 4 G	4044211047139	1 ST



Relay socket base PRS, for industrial relay with 4 CO contacts, Tension-spring connection, Plug-in option for input/suppression modules, Mounting type: Mounting rail TS 35

Article number	Article name	GTIN (EAN)	Packaging unit
<u>15431.2</u>	PRS 4 Z	4044211121488	1 ST



Pre-assembled relay module PRS..., Screw connection, Consisting of: relay socket base, power contact relay, pluggable display/suppression module and holding clip, 4 CO contacts, Input voltage: 12 VAC

Article number	Article name	GTIN (EAN)	Packaging unit
<u>15420.2</u>	PRSU 4G/12V AC	4044211080891	1 ST



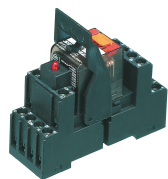
Pre-assembled relay module PRS..., Tension-spring connection, Consisting of: relay socket base, power contact relay, pluggable display/suppression module and holding clip, 4 CO contact, Input voltage: 12 VAC

Article number	Article name	GTIN (EAN)	Packaging unit
<u>15804.2</u>	PRSU 4Z/12V AC	4044211135485	1 ST

# Data sheet

## 15393.2 PRS 4/12V AC

##INVERSE##CONTA-ELECTRONICS



Pre-assembled relay module PRS..., Screw connection, Consisting of: relay socket base, power contact relay, pluggable display/suppression module and holding clip, 4 CO contacts, Input voltage: 12 VAC

Article number	Article name	GTIN (EAN)	Packaging unit
<u>15392.2</u>	PRSU 4/12V AC	4044211080860	1 ST



Relay socket base PRS, for industrial relay with 4 CO contacts, Push-in connection, Plug-in option for input/suppression modules and cross connections, Mounting type: Mounting rail TS 35

Article number	Article name	GTIN (EAN)	Packaging unit
<u>16504.2</u>	PPRS 4	4044211236250	10 ST