



Plug-in industrial relays with power contacts, 4 CO contacts, Test button, Mechanical switching position indicator, Polarity A1+, A2-, Input voltage: 48 VDC

Business data

Article number	<u>15461.2</u>
Article name	PRS 4/48V DC
GTIN (EAN)	4044211107086
Packaging unit	1
Quantity unit	PC
Weight per piece (not including packaging)	28.2 g
Weight per piece (including packaging)	30 g
Unit of weight	G
Customs number	85364110
Country of origin	AT
Product description	Relay, opened design

Technical data

Dimensions

Length	28 mm
Width	22.5 mm
Height	29 mm

Ratings

Overvoltage category	III
Contamination degree	2

Input data

Working voltage	>36,0 VDC -
Drop-out voltage	4,8 VDC
Coil voltage	48 VDC -
Power consumption	0,75 W
Coil resistance	3072 Ohm

Output data

Switching voltage / switching voltage max.	240 / 240 VAC
Continuous current max. / Inrush current max.	6 / 12 A
Contact configuration	4 CO contacts
Switching capacity, max.	1500 VA
Electrical lifespan (AC1)	1,5x10 ⁵ (@ 6 A)
Mechanical lifespan	30x10 ⁶
Contact load, min.	120 mW
Bounce time at close of the NO/NC contact	6/8 ms

Materials

Contact material	AgNi 90/10
Working temperature, min.	-40 °C
Working temperature, max.	70 °C

Technical data

Further technical data

Degree of protection	RTII (flux proof)
Insulation voltage coil/contact	2,5 kV
Response/release time	10 / 18 ms
Insulation voltage contact/contact	1,2 kV
Mechanical indicator	✓
Test button	✓
Vibration resistance NO/NC	7/4 g
Shock resistance NO/NC	20/5 g
Pinning	2,8 (AMP) mm

Environmental Product Compliance

REACH Conform	yes
REACH Reference date	2024-01-23
REACH Candidate Substance Note	No
RoHS Conform	yes

Data sheet

15461.2 PRS 4/48V DC



Approvals

Standards and regulations

CE compliant	yes
--------------	-----

Data sheet

15461.2 PRS 4/48V DC



Media

Accessories

##INVERSE##CONTA-ELECTRONICS



Pre-assembled relay module PRS..., Tension-spring connection, Consisting of: relay socket base, power contact relay, pluggable display/suppression module and holding clip, 4 CO contact, Input voltage: 48 VDC

Article number	Article name	GTIN (EAN)	Packaging unit
<u>15800.2</u>	PRSU 4Z/48V DC	4044211135447	1 ST



Relay socket base PRS, for industrial relay with 4 CO contacts, Push-in connection, Plug-in option for input/suppression modules and cross connections, Mounting type: Mounting rail TS 35

Article number	Article name	GTIN (EAN)	Packaging unit
<u>16504.2</u>	PPRS 4	4044211236250	10 ST



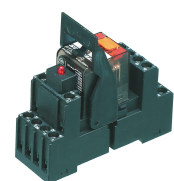
Relay socket base PRS, for industrial relay with 4 CO contacts, Tension-spring connection, Plug-in option for input/suppression modules, Mounting type: Mounting rail TS 35

Article number	Article name	GTIN (EAN)	Packaging unit
<u>15431.2</u>	PRS 4 Z	4044211121488	1 ST



Pre-assembled relay module PRS..., Tension-spring connection, Consisting of: relay socket base, power contact relay, pluggable display/suppression module and holding clip, 4 CO contact, Input voltage: 48 VDC

Article number	Article name	GTIN (EAN)	Packaging unit
<u>15800.2</u>	PRSU 4Z/48V DC	4044211135447	1 ST



Pre-assembled relay module PRS..., Screw connection, Consisting of: relay socket base, power contact relay, pluggable display/suppression module and holding clip, 4 CO contacts, Input voltage: 48 VDC

Article number	Article name	GTIN (EAN)	Packaging unit
<u>15724.2</u>	PRSU 4/48V DC	4044211138448	1 ST

##INVERSE##CONTA-ELECTRONICS



Pre-assembled relay module PRS..., Screw connection, Consisting of: relay socket base, power contact relay, pluggable display/suppression module and holding clip, 4 CO contacts, Input voltage: 48 VDC

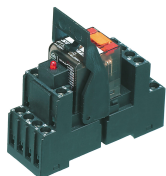
Article number	Article name	GTIN (EAN)	Packaging unit
<u>15729.2</u>	PRSU 4G/48V DC	4044211138493	1 ST



Relay socket base PRS, for industrial relay with 4 CO contacts, Push-in connection, Plug-in option for input/suppression modules and cross connections, Mounting type: Mounting rail TS 35

Article number	Article name	GTIN (EAN)	Packaging unit
<u>16504.2</u>	PPRS 4	4044211236250	10 ST

##INVERSE##CONTA-ELECTRONICS



Pre-assembled relay module PRS..., Screw connection, Consisting of: relay socket base, power contact relay, pluggable display/suppression module and holding clip, 4 CO contacts, Input voltage: 48 VDC

Article number	Article name	GTIN (EAN)	Packaging unit
<u>15724.2</u>	PRSU 4/48V DC	4044211138448	1 ST