



Plug-in miniature power relay, Encapsulated design with power contact, 1 CO contact, Input voltage: 110 VDC

### Business data

Article number	<u>15540.2</u>
Article name	PRS 1/110V DC
GTIN (EAN)	4044211117917
Packaging unit	1
Quantity unit	PC
Weight per piece (not including packaging)	13.8 g
Weight per piece (including packaging)	15.4 g
Unit of weight	G
Customs number	85364110
Country of origin	AT
Product description	Relay, encapsulated construction

### Technical data

#### Dimensions

Length	29 mm
Width	12.7 mm
Height	15.7 mm

#### Ratings

Overvoltage category	III
Contamination degree	3

#### Input data

Working voltage	>77 VDC -
Drop-out voltage	11 VDC
Coil voltage	110 VDC -
Power consumption	0,42 W
Coil resistance	28800 Ohm

#### Output data

Switching voltage / switching voltage max.	250 / 400 VAC
Continuous current max. / Inrush current max.	12 / 25 A
Contact configuration	1 CO contact
Switching capacity, max.	3000 VA
Electrical lifespan (AC1)	2x10 <sup>5</sup>
Mechanical lifespan	10x10 <sup>6</sup>

#### Materials

Contact material	AgNi 90/10
Working temperature, min.	-40 °C
Working temperature, max.	85 °C

#### Further technical data

Degree of protection	RTII (flux proof)
Insulation voltage coil/contact	5 kV
Response/release time	8 / 6 ms
Insulation voltage contact/contact	1 kV
Vibration resistance NO/NC	20/5 g
Pinning	3.5 mm

---

### Technical data

---

#### Environmental Product Compliance

---

REACH Conform	yes
REACH Reference date	2024-01-23
REACH Candidate Substance Note	No
RoHS Conform	yes

---

# Data sheet

15540.2 PRS 1/110V DC



---

## Approvals

---

### Standards and regulations

---

CE compliant	yes
--------------	-----

---

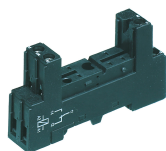
---

### Media

---

### Accessories

#### ##INVERSE##CONTA-ELECTRONICS



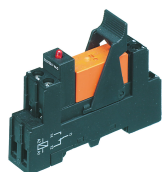
Relay socket base PRS, for miniature power relay with 1 CO contact, Screw connection, Plug-in option for input/suppression modules, Mounting type: Mounting rail TS 35

Article number	Article name	GTIN (EAN)	Packaging unit
<u>15135.2</u>	PRS 1	4044211046187	1 ST



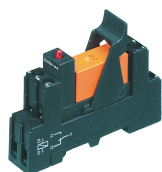
Pre-assembled relay module PRS..., Tension-spring connection, Consisting of: relay socket base, power contact relay, pluggable display/suppression module and holding clip, 1 CO contact, Input voltage: 110 VDC

Article number	Article name	GTIN (EAN)	Packaging unit
<u>15784.2</u>	PRSU 1Z/110V DC	4044211135294	1 ST



Pre-assembled relay module PRS..., Screw connection, Consisting of: relay socket base, power contact relay, pluggable display/suppression module and holding clip, 1 CO contact, Input voltage: 110 VDC

Article number	Article name	GTIN (EAN)	Packaging unit
<u>15721.2</u>	PRSU 1/110V DC	4044211138417	1 ST



Pre-assembled relay module PRS..., Screw connection, Consisting of: relay socket base, power contact relay, pluggable display/suppression module and holding clip, 1 CO contact, Input voltage: 110 VDC

Article number	Article name	GTIN (EAN)	Packaging unit
<u>15721.2</u>	PRSU 1/110V DC	4044211138417	1 ST