

Plug-in miniature power relay, Encapsulated design with power contact, 2 CO contact, Input voltage: 110 VDC

Business data

Article number	15541.2
Article name	PRS 2/110V DC
GTIN (EAN)	4044211117924
Packaging unit	1
Quantity unit	PC
Weight per piece (not including packaging)	13.7 g
Weight per piece (including packaging)	15.53 g
Unit of weight	G
Customs number	85364900
Country of origin	AT
Product description	Relay, encapsulated construction

Technical data

Dimensions

Length	29 mm
Width	12.7 mm
Height	15.7 mm

Ratings

Overvoltage category	III
Contamination degree	3 (250 VAC) / 2 (400 VAC)

Input data

Working voltage	>77,0 VDC -
Drop-out voltage	11,0 VDC
Coil voltage	110 VDC -
Power consumption	0,42 W
Coil resistance	28800 Ohm

Output data

Switching voltage / switching voltage max.	250 / 400 VAC
Continuous current max. / Inrush current max.	8 / 15 A
Contact configuration	2 CO contacts
Switching capacity, max.	2000 VA
Electrical lifespan (AC1)	1x10 ⁵
Mechanical lifespan	30x10 ⁶
Bounce time at close of the NO/NC contact	8/6 ms

Materials

Contact material	AgNi 90/10
Working temperature, min.	-40 °C
Working temperature, max.	70 °C

Further technical data

Degree of protection	RTII
Insulation voltage coil/contact	5 kV
Response/release time	8 / 6 ms
Insulation voltage contact/contact	1 kV
Vibration resistance NO/NC	20/5 g
Pinning	5 mm

Technical data

Environmental Product Compliance

REACH Conform	yes
---------------	-----

REACH Reference date	2024-01-23
----------------------	------------

REACH Candidate Substance Note	No
--------------------------------	----

RoHS Conform	yes
--------------	-----

Data sheet

15541.2 PRS 2/110V DC



Approvals

Standards and regulations

CE compliant	yes
--------------	-----

Data sheet

15541.2 PRS 2/110V DC



Media

Accessories

##INVERSE##CONTA-ELECTRONICS



Relay socket base PRS, for miniature power relay with 2 CO contacts, Screw connection, Plug-in option for input/suppression modules, Mounting type: Mounting rail TS 35

Article number	Article name	GTIN (EAN)	Packaging unit
<u>15320.2</u>	PRS 2 G	4044211047115	1 ST



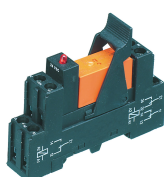
Relay socket base PRS, for miniature power relay with 2 CO contacts, Screw connection, Plug-in option for input/suppression modules, Mounting type: Mounting rail TS 35

Article number	Article name	GTIN (EAN)	Packaging unit
<u>15320.2</u>	PRS 2 G	4044211047115	1 ST



Relay socket base PRS, for miniature power relay with 2 CO contacts, Tension-spring connection, Plug-in option for input/suppression modules, Mounting type: Mounting rail TS 35

Article number	Article name	GTIN (EAN)	Packaging unit
<u>15789.2</u>	PRS 2 Z	4044211135256	1 ST



Pre-assembled relay module PRS..., Screw connection, Consisting of: relay socket base, power contact relay, pluggable display/suppression module and holding clip, 2 CO contacts, Input voltage: 110 VDC

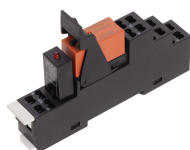
Article number	Article name	GTIN (EAN)	Packaging unit
<u>15722.2</u>	PRSU 2/110V DC	4044211138424	1 ST



Pre-assembled relay module PRS..., Screw connection, Consisting of: relay socket base, power contact relay, pluggable display/suppression module and holding clip, 2 CO contacts, Input voltage: 110 VDC

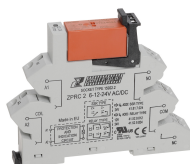
Article number	Article name	GTIN (EAN)	Packaging unit
<u>15723.2</u>	PRSU 2G/110V DC	4044211138431	1 ST

##INVERSE##CONTA-ELECTRONICS



Pre-assembled relay module PRS..., Tension-spring connection, Consisting of: relay socket base, power contact relay, pluggable display/suppression module and holding clip, 2 CO contact, Input voltage: 110 VDC

Article number	Article name	GTIN (EAN)	Packaging unit
<u>15794.2</u>	PRSU 2Z/110V DC	4044211135386	1 ST



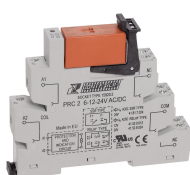
Plug-Relay-Compact (PRC) Complete, Consisting of base PRC... with tension-spring connection and pluggable miniature relay PRS... with power contact, Mounting type: Mounting rail TS 35, 2 CO contacts, Input voltage: 240 VAC/DC

Article number	Article name	GTIN (EAN)	Packaging unit
<u>15929.2</u>	ZPRCU 2 240V AC/DC	4044211137472	10 ST



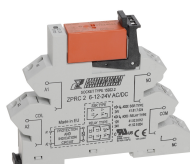
Relay socket base PRS, for miniature power relay with 2 CO contacts, Push-in connection, Plug-in option for input/suppression modules and cross connections, Mounting type: Mounting rail TS 35

Article number	Article name	GTIN (EAN)	Packaging unit
<u>16503.2</u>	PPRS 2	4044211236298	20 ST



Plug-Relay-Compact (PRC) Complete, Consisting of base PRC... with screw connection and pluggable miniature relay PRS... with power contact, Mounting type: Mounting rail TS 35, 2 CO contacts, Input voltage: 240 VAC/DC

Article number	Article name	GTIN (EAN)	Packaging unit
<u>15926.2</u>	PRCU 2 240V AC/DC	4044211137441	10 ST



Plug-Relay-Compact (PRC) Complete, Consisting of base PRC... with tension-spring connection and pluggable miniature relay PRS... with power contact, Mounting type: Mounting rail TS 35, 2 CO contacts, Input voltage: 240 VAC/DC

Article number	Article name	GTIN (EAN)	Packaging unit
<u>15929.2</u>	ZPRCU 2 240V AC/DC	4044211137472	10 ST

15541.2 PRS 2/110V DC

##INVERSE##CONTA-ELECTRONICS



Relay socket base PRS, for miniature power relay with 2 CO contacts, Push-in connection, Plug-in option for input/suppression modules and cross connections, Mounting type: Mounting rail TS 35

Article number	Article name	GTIN (EAN)	Packaging unit
<u>16503.2</u>	PPRS 2	4044211236298	20 ST