



Plug-in industrial relays with power contacts, 2 CO contacts, Test button, Status LED, Free-wheel diode, Mechanical switching position indicator, Polarity A1+, A2-, Input voltage: 24 VDC

### Business data

Article number	<u>15591.2</u>
Article name	PRS 4/24V DC eco
GTIN (EAN)	4044211118976
Packaging unit	1
Quantity unit	PC
Weight per piece (not including packaging)	35.2 g
Weight per piece (including packaging)	39.19 g
Unit of weight	G
Customs number	85364900
Country of origin	PL
Product description	Relay, opened design

### Technical data

#### Dimensions

Length	27.5 mm
Width	21.2 mm
Height	33 mm

#### Ratings

Overvoltage category	II
Contamination degree	2

#### Input data

Working voltage	19,2-26,4 VDC -
Drop-out voltage	<0,1 Un
Coil voltage	24 VDC -
Power consumption	0,9 W
Coil resistance	640 Ohm

#### Output data

Switching voltage / switching voltage max.	250 / 250 VAC
Continuous current max. / Inrush current max.	6 / 12 A
Contact configuration	4 CO contacts
Switching capacity, max.	1500 VA
Electrical lifespan (AC1)	>1x10 <sup>5</sup> (@ 6 A)
Mechanical lifespan	20x10 <sup>6</sup>
Contact load, min.	300 mW

#### Materials

Contact material	AgNi
Working temperature, min.	-40 °C
Working temperature, max.	70 °C

---

### Technical data

---

#### Further technical data

Degree of protection	RTI
Status display	✓
Insulation voltage coil/contact	2,5 kV
Free-wheel diode	✓
Response/release time	13 / 3 ms
Insulation voltage contact/contact	2 kV
Mechanical indicator	✓
Test button	✓
Vibration resistance NO/NC	5 g
Shock resistance NO/NC	10/5 g
Pinning	2,8 (AMP) mm

#### Environmental Product Compliance

REACH Conform	yes
REACH Reference date	2024-01-23
REACH Candidate Substance Note	No
RoHS Conform	yes

# Data sheet



## 15591.2 PRS 4/24V DC eco

---

### Approvals

---

#### Standards and regulations

---

CE compliant

yes

---

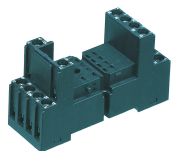
---

### Media

---

### Accessories

#### ##INVERSE##CONTA-ELECTRONICS



Relay socket base PRS, for industrial relay with 4 CO contacts, Screw connection, Plug-in option for input/suppression modules, Mounting type: Mounting rail TS 35

Article number	Article name	GTIN (EAN)	Packaging unit
<a href="#">15137.2</a>	PRS 4	4044211046200	1 ST



Relay socket base PRS, for industrial relay with 4 CO contacts, Screw connection, Plug-in option for input/suppression modules, Mounting type: Mounting rail TS 35

Article number	Article name	GTIN (EAN)	Packaging unit
<a href="#">15324.2</a>	PRS 4 G	4044211047139	1 ST



Pre-assembled relay module PRS..., Tension-spring connection, Consisting of: relay socket base and power contact relay, 4 CO contacts, Input voltage: 24 VDC

Article number	Article name	GTIN (EAN)	Packaging unit
<a href="#">15625.2</a>	PRSU 4Z/24V DC eco	4044211121556	5 ST



Pre-assembled relay module PRS..., Screw connection, Consisting of: relay socket base and power contact relay, 4 CO contacts, Input voltage: 24 VDC

Article number	Article name	GTIN (EAN)	Packaging unit
<a href="#">15619.2</a>	PRSU 4/24V DC eco	4044211121495	1 ST



Pre-assembled relay module PRS..., Screw connection, Consisting of: relay socket base and power contact relay, 4 CO contacts, Input voltage: 24 VDC

Article number	Article name	GTIN (EAN)	Packaging unit
<a href="#">15622.2</a>	PRSU 4G/24V DC eco	4044211121518	10 ST



Pre-assembled relay module PRS..., Tension-spring connection, Consisting of: relay socket base and power contact relay, 4 CO contacts, Input voltage: 24 VDC

Article number	Article name	GTIN (EAN)	Packaging unit
<a href="#">15625.2</a>	PRSU 4Z/24V DC eco	4044211121556	5 ST

## 15591.2 PRS 4/24V DC eco

##INVERSE##CONTA-ELECTRONICS



Relay socket base PRS, for industrial relay with 4 CO contacts, Push-in connection, Plug-in option for input/suppression modules and cross connections, Mounting type: Mounting rail TS 35

Article number	Article name	GTIN (EAN)	Packaging unit
<u>16504.2</u>	PPRS 4	4044211236250	10 ST