

Feed-through terminal, Screw connection, Mounting type: Mounting rail TS 35/7.5 and TS 32, Rated cross-section: 10 mm², Width: 8 mm, Colour: Black-yellow

Business data

Article number	<u>1564.2</u>
Article name	RK 6-10/PE BKYE
GTIN (EAN)	4044211047351
Packaging unit	100
Quantity unit	PC
Weight per piece (not including packaging)	14.8 g
Weight per piece (including packaging)	15.45 g
Unit of weight	G
Customs number	85369010
Country of origin	CZ
Product description	Feed-through terminal
Colour	Black-yellow

Technical data

Dimensions

Length	48 mm
Width	8 mm
Height TS 35/7.5	47 mm
Height TS 32	51.5 mm

Ratings

Rated voltage	800 V
Rated current	57 A
Rated cross-section	10 mm ²
Rated impulse voltage	6 kV
Overvoltage category	III
Contamination degree	3
Maximum power dissipation for nominal condition	1.82 W

Connection data

Connection principle	Screw connection
Connection position	Lateral
Connections	2
Number of terminals per level	2
Number of levels	1
Wire cross-section single-core (rigid) / stranded, min.	0.2 mm ²
Wire cross-section single core (rigid)/stranded, max.	10 mm ²
Wire cross-section stranded, min.	0.2 mm ²
Wire cross-section stranded, max.	10 mm ²
Wire cross-section stranded with wire-end ferrules, min.	0.2 mm ²
Wire cross-section stranded with wire-end ferrules, max.	10 mm ²
Wire cross-section AWG, min.	22
Wire cross-section AWG, max.	8
Stripping length	12 mm
Screw head	Slotted
Screw threading	M 4
Tightening torque, min.	1.2 Nm
Tightening torque, max.	2 Nm

Technical data

Materials

Insulation housing	Polyamide 6.6
Flammability class UL 94	V-2
Working temperature, min.	-40 °C
Working temperature, max.	105 °C

Further technical data

Mounting type	Mounting rail TS 35/7.5 and TS 32
Gauge plug acc. to EN 60 947-1	A5
Number of cross-connection channels	1
End plate required	✓
Number of test pick-off options	1

Environmental Product Compliance

REACH Conform	yes
REACH Reference date	2024-01-23
REACH Candidate Substance Note	No
RoHS Conform	yes

Approvals

Standards and regulations

EAC approval	TR ZU 004/2011
--------------	----------------

EAC approval granted	yes
----------------------	-----

CSA approval

CSA approval	C22.2 No 158
--------------	--------------

CSA approval granted	yes
----------------------	-----

CSA Usegroup C: rated voltage	600 V
-------------------------------	-------

CSA Usegroup C: rated current	55 A
-------------------------------	------

CSA wire cross-section AWG, min.	22
----------------------------------	----

CSA wire cross-section AWG, max.	10
----------------------------------	----

CSA stripping length	12 mm
----------------------	-------

CSA torque, max.	2 Nm
------------------	------

CSA torque, min.	1.2 Nm
------------------	--------

CSA File Number	042110_0_000
-----------------	--------------

KEMA KEUR approval

KEMA KEUR approval	EN 60947-7-1:2009
--------------------	-------------------

KEMA KEUR approval granted	yes
----------------------------	-----

KEMA rated voltage	800 V
--------------------	-------

KEMA rated current	57 A
--------------------	------

KEMA rated impulse voltage	6 kV
----------------------------	------

KEMA wire cross-section single core (rigid), min.	0.2 mm ²
---	---------------------

KEMA wire cross-section single-core (rigid), max.	10 mm ²
---	--------------------

KEMA wire cross-section stranded, min.	0.2 mm ²
--	---------------------

KEMA wire cross-section stranded, max.	10 mm ²
--	--------------------

KEMA torque, min.	1.2 Nm
-------------------	--------

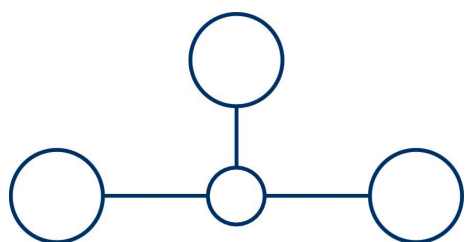
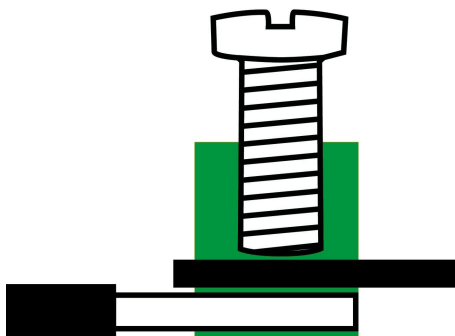
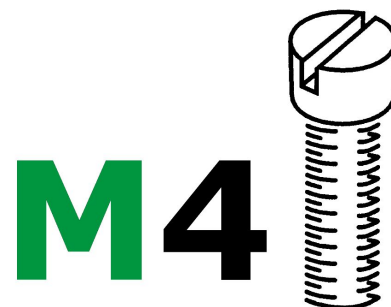
KEMA torque, max.	2 Nm
-------------------	------

Approvals

UL Recognized

UL approval	UL 1059
UL Usegroup C: rated voltage	600 V
UL Usegroup C: rated current	65 A
UL wire cross-section single-core (rigid) AWG, min.	22
UL wire cross-section single-core (rigid) AWG, max.	6
UL wire cross-section stranded AWG, min.	22
UL wire cross-section stranded AWG, max.	6
UL torque	12 Lb In
UL wire material	Cu
UL factory wiring	1
UL field wiring	1
UL File Number	E95701
UL Recognized	1

Media



Accessories

Cover



Cover, Length: 26.5 mm, Width: 8 mm, Colour: White

Article number	Article name	GTIN (EAN)	Packaging unit
<u>2966.0</u>	AD 1/8 WH	4044211056957	50 ST



Cover, Length: 32 mm, Width: 28 mm, Colour: Yellow

Article number	Article name	GTIN (EAN)	Packaging unit
<u>2054.0</u>	AD 4/32/B YE	4044211048600	50 ST



Cover, Length: 32 mm, Width: 28 mm, Colour: Yellow

Article number	Article name	GTIN (EAN)	Packaging unit
<u>2495.0</u>	AD 4/32/B/E YE	4044211052966	50 ST



Cover, Length: 26.5 mm, Width: 8 mm, Colour: Yellow

Article number	Article name	GTIN (EAN)	Packaging unit
<u>2954.0</u>	AD 1/8/B YE	4044211056827	50 ST

End plate

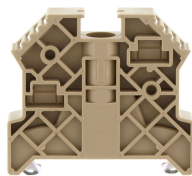


End plate, Width: 1.5 mm, Colour: Beige

Article number	Article name	GTIN (EAN)	Packaging unit
<u>2001.2</u>	AP 2,5-10 BG	4044211047979	50

End stop

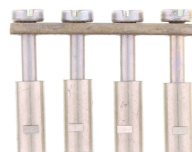
1564.2 RK 6-10/PE BKYE



End stop, Mounting type: Mounting rail TS 35/7.5, Width: 9.5 mm, Colour: Beige

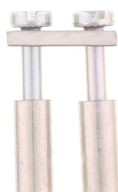
Article number	Article name	GTIN (EAN)	Packaging unit
<u>2828.0</u>	ES 35/K/ST BG	4044211055547	50

Cross-connector



Cross-connector, No. of poles: 4, Mounting type: Can be screwed on, Width: 30.3 mm, Rated cross-section: 10 mm², Colour: natural

Article number	Article name	GTIN (EAN)	Packaging unit
<u>2062.0</u>	Q 4	4044211048686	20 ST



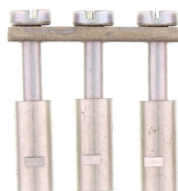
Cross-connector, No. of poles: 2, Mounting type: Can be screwed on, Width: 14.1 mm, Rated cross-section: 10 mm², Colour: natural

Article number	Article name	GTIN (EAN)	Packaging unit
<u>2060.0</u>	Q 2	4044211048662	50 ST



Cross-connector, No. of poles: 10, Mounting type: Can be screwed on, Width: 78.9 mm, Rated cross-section: 10 mm², Colour: natural

Article number	Article name	GTIN (EAN)	Packaging unit
<u>2063.0</u>	Q 10	4044211048693	10 ST



Cross-connector, No. of poles: 3, Mounting type: Can be screwed on, Width: 22.2 mm, Rated cross-section: 10 mm², Colour: natural

Article number	Article name	GTIN (EAN)	Packaging unit
<u>2061.0</u>	Q 3	4044211048679	50 ST

Insulated cross-connector

1564.2 RK 6-10/PE BKYE

Insulated cross-connector, No. of poles: 10, Mounting type: Can be screwed on, Width: 78.4 mm, Colour: Yellow



Article number	Article name	GTIN (EAN)	Packaging unit
<u>2753.2</u>	QI 10 YE	4044211054892	10 ST

Insulated cross-connector, No. of poles: 4, Mounting type: Can be screwed on, Width: 28.8 mm, Colour: Yellow



Article number	Article name	GTIN (EAN)	Packaging unit
<u>2752.2</u>	QI 4 YE	4044211054885	20 ST

Insulated cross-connector, No. of poles: 2, Mounting type: Can be screwed on, Width: 13.6 mm, Colour: Yellow



Article number	Article name	GTIN (EAN)	Packaging unit
<u>2750.2</u>	QI 2 YE	4044211054861	50 ST

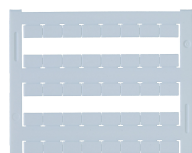
Insulated cross-connector, No. of poles: 3, Mounting type: Can be screwed on, Width: 21.7 mm, Colour: Yellow



Article number	Article name	GTIN (EAN)	Packaging unit
<u>2751.2</u>	QI 3 YE	4044211054878	50 ST

Quick marking

Terminal marker / Pocket Maxicard, Length: 5 mm, Width: 8 mm, Colour: White



Article number	Article name	GTIN (EAN)	Packaging unit
<u>9323.7</u>	PMC SB 8/40 WH	4044211129231	400 ST

Screwdriver

1564.2 RK 6-10/PE BKYE

Screwdriver with bare blade, Colour: Black-grey



Article number	Article name	GTIN (EAN)	Packaging unit
<u>1087.0</u>	SDB 0,8x4,0	4044211014803	1 ST

Test adapters



Test adapter, Length: 37.3 mm, Pitch size: 8 mm, Colour: Beige

Article number	Article name	GTIN (EAN)	Packaging unit
<u>2817.0</u>	TA 8/1/ST	4044211055431	10 ST

Insulation plate



Insulation plate, Colour: Beige

Article number	Article name	GTIN (EAN)	Packaging unit
<u>2003.2</u>	TRS 1 BG	4044211048068	100

Partition plate



Partition plate, Width: 1.5 mm, Colour: Beige

Article number	Article name	GTIN (EAN)	Packaging unit
<u>2002.2</u>	TW 2,5-10 BG	4044211048044	50

##INVERSE##CONTA-CONNECT



Test adapter, Length: 37.3 mm, Pitch size: 8 mm, Colour: Beige

Article number	Article name	GTIN (EAN)	Packaging unit
<u>2817.0</u>	TA 8/1/ST	4044211055431	10 ST