



Plug-in industrial relays with power contacts, 2 CO contacts, Test button, Status LED, Free-wheel diode, Mechanical switching position indicator, Polarity A1+, A2-, Input voltage: 24 VDC

Business data

Article number	<u>16013.2</u>
Article name	PRSXT 2/24V DC
GTIN (EAN)	4044211145187
Packaging unit	10
Quantity unit	PC
Weight per piece (not including packaging)	14.5 g
Weight per piece (including packaging)	17.58 g
Unit of weight	G
Customs number	85364900
Country of origin	CN
Product description	Relay, XT design

Technical data

Dimensions

Length	29 mm
Width	13 mm
Height	26.7 mm

Ratings

Overvoltage category	III
Contamination degree	3 (250 VAC) / 2 (400 VAC)

Input data

Working voltage	>16,8 VDC -
Drop-out voltage	2,4 VDC
Coil voltage	24 VDC -
Power consumption	0,4 W
Coil resistance	1440 Ohm

Output data

Switching voltage / switching voltage max.	250 / 400 VAC
Continuous current max. / Inrush current max.	8 / 15 A
Contact configuration	2 CO contacts
Switching capacity, max.	2000 VA
Electrical lifespan (AC1)	50x10 ³
Mechanical lifespan	10x10 ⁶
Bounce time at close of the NO/NC contact	4/9 ms

Materials

Contact material	AgNi 90/10
Working temperature, min.	-40 °C
Working temperature, max.	70 °C

Further technical data

Degree of protection	RTII
Status display	✓
Insulation voltage coil/contact	5 kV
Response/release time	10 / 5 ms
Insulation voltage contact/contact	1 kV
Mechanical indicator	✓
Test button	✓
Vibration resistance NO/NC	20/5 g
Pinning	5 mm

Technical data

Environmental Product Compliance

REACH Conform	yes
---------------	-----

REACH Reference date	2024-01-23
----------------------	------------

REACH Candidate Substance Note	No
--------------------------------	----

RoHS Conform	yes
--------------	-----

Approvals

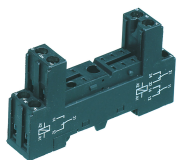
Standards and regulations

CE compliant	yes
--------------	-----

Media

Accessories

##INVERSE##CONTA-ELECTRONICS



Relay socket base PRS, for miniature power relay with 2 CO contacts, Screw connection, Plug-in option for input/suppression modules, Mounting type: Mounting rail TS 35

Article number	Article name	GTIN (EAN)	Packaging unit
<u>15136.2</u>	PRS 2	4044211046194	1 ST



Relay socket base PRS, for miniature power relay with 2 CO contacts, Screw connection, Plug-in option for input/suppression modules, Mounting type: Mounting rail TS 35

Article number	Article name	GTIN (EAN)	Packaging unit
<u>15320.2</u>	PRS 2 G	4044211047115	1 ST



Relay socket base PRS, for miniature power relay with 2 CO contacts, Tension-spring connection, Plug-in option for input/suppression modules, Mounting type: Mounting rail TS 35

Article number	Article name	GTIN (EAN)	Packaging unit
<u>15789.2</u>	PRS 2 Z	4044211135256	1 ST



Relay socket base PRS, for miniature power relay with 2 CO contacts, Push-in connection, Plug-in option for input/suppression modules and cross connections, Mounting type: Mounting rail TS 35

Article number	Article name	GTIN (EAN)	Packaging unit
<u>16503.2</u>	PPRS 2	4044211236298	20 ST