

Data sheet

16016.2 PRSXT C1/2



Relay holding clip, With eject, Suitable for relay socket base PRS 1 and PRS 2, for industrial relay XT

Business data

Article number	16016.2
Article name	PRSXT C1/2
GTIN (EAN)	4044211145217
Packaging unit	20
Quantity unit	PC
Weight per piece (not including packaging)	1.9 g
Weight per piece (including packaging)	1.96 g
Unit of weight	G
Customs number	85389099
Country of origin	CN
Product description	Holding clip

Data sheet

16016.2 PRSXT C1/2



Technical data

Materials

Working temperature, min.	-40 °C
Working temperature, max.	70 °C
Storage temperature, min.	-40 °C
Storage temperature, max.	85 °C

Further technical data

Holding clip suitable for relay base, type	PRS 1 / PRS 2
--	---------------

Environmental Product Compliance

REACH Conform	yes
REACH Reference date	2023-06-14
REACH Candidate Substance Note	No
RoHS Conform	yes

Media

Accessories

##INVERSE##CONTA-ELECTRONICS



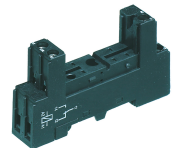
Pre-assembled relay module PRSXT, Screw connection, Consisting of: relay socket, holding clip and power contact relay with test button and status LED. 2 CO contacts, Input voltage: 24 VAC

Article number	Article name	GTIN (EAN)	Packaging unit
<u>16018.2</u>	PRSXT 2/24V AC	4044211145231	1 ST



Pre-assembled relay module PRSXT, Screw connection, Consisting of: relay socket, holding clip and power contact relay with test button and status LED. 2 CO contacts, Input voltage: 230 VAC

Article number	Article name	GTIN (EAN)	Packaging unit
<u>16019.2</u>	PRSXT 2/230V AC	4044211145248	1 ST



Relay socket base PRS, for miniature power relay with 1 CO contact, Screw connection, Plug-in option for input/suppression modules, Mounting type: Mounting rail TS 35

Article number	Article name	GTIN (EAN)	Packaging unit
<u>15135.2</u>	PRS 1	4044211046187	1 ST



Pre-assembled relay module PRSXT, Tension-spring connection, Consisting of: relay socket, holding clip and power contact relay with test button and status LED. 1 CO contact, Input voltage: 230 VAC

Article number	Article name	GTIN (EAN)	Packaging unit
<u>16094.2</u>	PRSXT 1Z/230V AC	4044211171445	1 ST



Pre-assembled relay module PRSXT, Screw connection, Consisting of: relay socket, holding clip and power contact relay with test button and status LED. 2 CO contacts, Input voltage: 230 VAC

Article number	Article name	GTIN (EAN)	Packaging unit
<u>16022.2</u>	PRSXT 2G/230V AC	4044211145279	10 ST

Data sheet

16016.2 PRSXT C1/2

##INVERSE##CONTA-ELECTRONICS



Pre-assembled relay module PRSXT, Screw connection, Consisting of: relay socket, holding clip and power contact relay with test button and status LED. 1 CO contact, Input voltage: 24 VDC

Article number	Article name	GTIN (EAN)	Packaging unit
<u>16086.2</u>	PRSXT 1/24V DC	4044211171346	10 ST



Pre-assembled relay module PRSXT, Screw connection, Consisting of: relay socket, holding clip and power contact relay with test button and status LED. 1 CO contact, Input voltage: 230 VAC

Article number	Article name	GTIN (EAN)	Packaging unit
<u>16091.2</u>	PRSXT 1G/230V AC	4044211171421	1 ST



Pre-assembled relay module PRSXT, Screw connection, Consisting of: relay socket, holding clip and power contact relay with test button and status LED. 2 CO contacts, Input voltage: 24 VDC

Article number	Article name	GTIN (EAN)	Packaging unit
<u>16017.2</u>	PRSXT 2/24V DC	4044211145224	10 ST



Pre-assembled relay module PRSXT, Screw connection, Consisting of: relay socket, holding clip and power contact relay with test button and status LED. 2 CO contacts, Input voltage: 24 VDC

Article number	Article name	GTIN (EAN)	Packaging unit
<u>16017.2</u>	PRSXT 2/24V DC	4044211145224	10 ST



Pre-assembled relay module PRSXT, Screw connection, Consisting of: relay socket, holding clip and power contact relay with test button and status LED. 1 CO contact, Input voltage: 230 VAC

Article number	Article name	GTIN (EAN)	Packaging unit
<u>16088.2</u>	PRSXT 1/230V AC	4044211171407	1 ST

Data sheet

16016.2 PRSXT C1/2

##INVERSE##CONTA-ELECTRONICS



Pre-assembled relay module PRSXT, Screw connection, Consisting of: relay socket, holding clip and power contact relay with test button and status LED. 1 CO contact, Input voltage: 230 VAC

Article number	Article name	GTIN (EAN)	Packaging unit
<u>16091.2</u>	PRSXT 1G/230V AC	4044211171421	1 ST



Pre-assembled relay module PRSXT, Screw connection, Consisting of: relay socket, holding clip and power contact relay with test button and status LED. 1 CO contact, Input voltage: 230 VAC

Article number	Article name	GTIN (EAN)	Packaging unit
<u>16088.2</u>	PRSXT 1/230V AC	4044211171407	1 ST



Pre-assembled relay module PRSXT, Tension-spring connection, Consisting of: relay socket, holding clip and power contact relay with test button and status LED. 1 CO contact, Input voltage: 230 VAC

Article number	Article name	GTIN (EAN)	Packaging unit
<u>16094.2</u>	PRSXT 1Z/230V AC	4044211171445	1 ST



Pre-assembled relay module PRSXT, Tension-spring connection, Consisting of: relay socket, holding clip and power contact relay with test button and status LED. 1 CO contact, Input voltage: 230 VAC

Article number	Article name	GTIN (EAN)	Packaging unit
<u>16094.2</u>	PRSXT 1Z/230V AC	4044211171445	1 ST



Pre-assembled relay module PRSXT, Screw connection, Consisting of: relay socket, holding clip and power contact relay with test button and status LED. 1 CO contact, Input voltage: 24 VAC

Article number	Article name	GTIN (EAN)	Packaging unit
<u>16090.2</u>	PRSXT 1G/24V AC	4044211171384	1 ST

##INVERSE##CONTA-ELECTRONICS



Pre-assembled relay module PRSXT, Tension-spring connection, Consisting of: relay socket, holding clip and power contact relay with test button and status LED. 1 CO contact, Input voltage: 24 VDC

Article number	Article name	GTIN (EAN)	Packaging unit
16092.2	PRSXT 1Z/24V DC	4044211171360	1 ST



Pre-assembled relay module PRSXT, Tension-spring connection, Consisting of: relay socket, holding clip and power contact relay with test button and status LED. 1 CO contact, Input voltage: 24 VAC

Article number	Article name	GTIN (EAN)	Packaging unit
16093.2	PRSXT 1Z/24V AC	4044211171391	1 ST



Pre-assembled relay module PRSXT, Tension-spring connection, Consisting of: relay socket, holding clip and power contact relay with test button and status LED. 1 CO contact, Input voltage: 24 VAC

Article number	Article name	GTIN (EAN)	Packaging unit
16093.2	PRSXT 1Z/24V AC	4044211171391	1 ST



Pre-assembled relay module PRSXT, Tension-spring connection, Consisting of: relay socket, holding clip and power contact relay with test button and status LED. 1 CO contact, Input voltage: 230 VAC

Article number	Article name	GTIN (EAN)	Packaging unit
16094.2	PRSXT 1Z/230V AC	4044211171445	1 ST



Pre-assembled relay module PRSXT, Screw connection, Consisting of: relay socket, holding clip and power contact relay with test button and status LED. 1 CO contact, Input voltage: 24 VAC

Article number	Article name	GTIN (EAN)	Packaging unit
16090.2	PRSXT 1G/24V AC	4044211171384	1 ST

##INVERSE##CONTA-ELECTRONICS



Pre-assembled relay module PRSXT, Screw connection, Consisting of: relay socket, holding clip and power contact relay with test button and status LED. 1 CO contact, Input voltage: 230 VAC

Article number	Article name	GTIN (EAN)	Packaging unit
<u>16091.2</u>	PRSXT 1G/230V AC	4044211171421	1 ST



Pre-assembled relay module PRSXT, Tension-spring connection, Consisting of: relay socket, holding clip and power contact relay with test button and status LED. 1 CO contact, Input voltage: 24 VDC

Article number	Article name	GTIN (EAN)	Packaging unit
<u>16092.2</u>	PRSXT 1Z/24V DC	4044211171360	1 ST



Pre-assembled relay module PRSXT, Tension-spring connection, Consisting of: relay socket, holding clip and power contact relay with test button and status LED. 1 CO contact, Input voltage: 24 VAC

Article number	Article name	GTIN (EAN)	Packaging unit
<u>16093.2</u>	PRSXT 1Z/24V AC	4044211171391	1 ST