

Plug-in industrial relays with power contacts, 1 CO contact, Test button, Status LED, Free-wheel diode, Mechanical switching position indicator, Polarity A1+, A2-, Input voltage: 24 VDC

Business data

Article number	<u>16083.2</u>
Article name	PRSXT 1/24V DC
GTIN (EAN)	4044211171520
Packaging unit	10
Quantity unit	PC
Weight per piece (not including packaging)	16 g
Weight per piece (including packaging)	16.1 g
Unit of weight	G
Customs number	85364900
Country of origin	CN
Product description	Relay

Technical data

Dimensions

Length	29 mm
Width	13 mm
Height	26.7 mm

Ratings

Overvoltage category	III
Contamination degree	3 (250 VAC) / 2 (400 VAC)

Input data

Working voltage	>16,8 VDC -
Drop-out voltage	2,4 VDC
Coil voltage	24 VDC -
Power consumption	0,4 W
Coil resistance	1440 Ohm

Output data

Switching voltage / switching voltage max.	250 / 400 VAC
Continuous current max. / Inrush current max.	16 / 30 A
Contact configuration	1 CO contact
Switching capacity, max.	4000 VA
Electrical lifespan (AC1)	50x10 ³
Mechanical lifespan	10x10 ⁶
Bounce time at close of the NO/NC contact	4/6 ms

Materials

Contact material	AgNi 90/10
Working temperature, min.	-40 °C
Working temperature, max.	70 °C

Further technical data

Degree of protection	RTII
Insulation voltage coil/contact	5 kV
Free-wheel diode	✓
Response/release time	8 / 6 ms
Insulation voltage contact/contact	1 kV
Test button	✓
Vibration resistance NO/NC	20/5 g
Pinning	5 mm

Technical data

Environmental Product Compliance

REACH Conform	yes
REACH Reference date	2024-01-23
REACH Candidate Substance Note	No
RoHS Conform	yes

Approvals

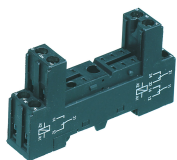
Standards and regulations

CE compliant	yes
--------------	-----

Media

Accessories

##INVERSE##CONTA-ELECTRONICS



Relay socket base PRS, for miniature power relay with 2 CO contacts, Screw connection, Plug-in option for input/suppression modules, Mounting type: Mounting rail TS 35

Article number	Article name	GTIN (EAN)	Packaging unit
<u>15136.2</u>	PRS 2	4044211046194	1 ST



Relay socket base PRS, for miniature power relay with 2 CO contacts, Tension-spring connection, Plug-in option for input/suppression modules, Mounting type: Mounting rail TS 35

Article number	Article name	GTIN (EAN)	Packaging unit
<u>15789.2</u>	PRS 2 Z	4044211135256	1 ST



Relay socket base PRS, for miniature power relay with 2 CO contacts, Push-in connection, Plug-in option for input/suppression modules and cross connections, Mounting type: Mounting rail TS 35

Article number	Article name	GTIN (EAN)	Packaging unit
<u>16503.2</u>	PPRS 2	4044211236298	20 ST



Relay socket base PRS, for miniature power relay with 1 CO contact, Tension-spring connection, Plug-in option for input/suppression modules, Mounting type: Mounting rail TS 35

Article number	Article name	GTIN (EAN)	Packaging unit
<u>15780.2</u>	PRS 1 Z	4044211135249	1 ST



Relay socket base PRS, for miniature power relay with 2 CO contacts, Push-in connection, Plug-in option for input/suppression modules and cross connections, Mounting type: Mounting rail TS 35

Article number	Article name	GTIN (EAN)	Packaging unit
<u>16503.2</u>	PPRS 2	4044211236298	20 ST

16083.2 PRSXT 1/24V DC

##INVERSE##CONTA-ELECTRONICS



Relay socket base PRS, for miniature power relay with 2 CO contacts, Push-in connection, Plug-in option for input/suppression modules and cross connections, Mounting type: Mounting rail TS 35

Article number	Article name	GTIN (EAN)	Packaging unit
<u>16503.2</u>	PPRS 2	4044211236298	20 ST