

Plug-in industrial relays with power contacts, 1 CO contact, Test button, Status LED, Mechanical switching position indicator, Input voltage: 24 VAC

### Business data

Article number	<u>16084.2</u>
Article name	PRSXT 1/24V AC
GTIN (EAN)	4044211171537
Packaging unit	10
Quantity unit	PC
Weight per piece (not including packaging)	16 g
Weight per piece (including packaging)	16.1 g
Unit of weight	G
Customs number	85364900
Country of origin	CN
Product description	Relay

### Technical data

#### Dimensions

Length	29 mm
Width	13 mm
Height	26.7 mm

#### Ratings

Overvoltage category	III
Contamination degree	3 (250 VAC) / 2 (400 VAC)

#### Input data

Working voltage	>18,0 VAC -
Drop-out voltage	3,6 VAC
Coil voltage	24 VAC -
Power consumption	0,76 W
Coil resistance	350 Ohm

#### Output data

Switching voltage / switching voltage max.	250 / 400 VAC
Continuous current max. / Inrush current max.	16 / 30 A
Contact configuration	1 CO contact
Switching capacity, max.	4000 VA
Electrical lifespan (AC1)	50x10 <sup>3</sup>
Mechanical lifespan	5x10 <sup>6</sup>

#### Materials

Contact material	AgNi 90/10
Working temperature, min.	-40 °C
Working temperature, max.	70 °C

#### Further technical data

Degree of protection	RTII
Insulation voltage coil/contact	5 kV
Free-wheel diode	✓
Insulation voltage contact/contact	1 kV
Test button	✓
Vibration resistance NO/NC	20/5 g
Pinning	5 mm

---

### Technical data

---

#### Environmental Product Compliance

---

REACH Conform	yes
REACH Reference date	2024-01-23
REACH Candidate Substance Note	No
RoHS Conform	yes

---

### Approvals

---

#### Standards and regulations

---

CE compliant	yes
--------------	-----

---

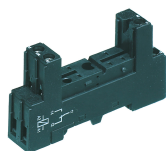
---

### Media

---

### Accessories

#### ##INVERSE##CONTA-ELECTRONICS



Relay socket base PRS, for miniature power relay with 1 CO contact, Screw connection, Plug-in option for input/suppression modules, Mounting type: Mounting rail TS 35

Article number	Article name	GTIN (EAN)	Packaging unit
<u>15135.2</u>	PRS 1	4044211046187	1 ST



Relay socket base PRS, for miniature power relay with 2 CO contacts, Screw connection, Plug-in option for input/suppression modules, Mounting type: Mounting rail TS 35

Article number	Article name	GTIN (EAN)	Packaging unit
<u>15320.2</u>	PRS 2 G	4044211047115	1 ST



Relay socket base PRS, for miniature power relay with 2 CO contacts, Tension-spring connection, Plug-in option for input/suppression modules, Mounting type: Mounting rail TS 35

Article number	Article name	GTIN (EAN)	Packaging unit
<u>15789.2</u>	PRS 2 Z	4044211135256	1 ST



Relay socket base PRS, for miniature power relay with 1 CO contact, Tension-spring connection, Plug-in option for input/suppression modules, Mounting type: Mounting rail TS 35

Article number	Article name	GTIN (EAN)	Packaging unit
<u>15780.2</u>	PRS 1 Z	4044211135249	1 ST



Relay socket base PRS, for miniature power relay with 1 CO contact, Screw connection, Plug-in option for input/suppression modules, Mounting type: Mounting rail TS 35

Article number	Article name	GTIN (EAN)	Packaging unit
<u>15135.2</u>	PRS 1	4044211046187	1 ST

## 16084.2 PRSXT 1/24V AC

##INVERSE##CONTA-ELECTRONICS



Relay socket base PRS, for miniature power relay with 2 CO contacts, Push-in connection, Plug-in option for input/suppression modules and cross connections, Mounting type: Mounting rail TS 35

Article number	Article name	GTIN (EAN)	Packaging unit
<u>16503.2</u>	PPRS 2	4044211236298	20 ST