



Plug-in industrial relays with multi-layer gold contact, 4 CO contacts, Test button, Mechanical switching position indicator, Polarity A1+, A2-, Input voltage: 24 VDC

Business data

Article number	<u>16126.2</u>
Article name	PRS 4/24V DC Au
GTIN (EAN)	4044211178208
Packaging unit	1
Quantity unit	PC
Weight per piece (not including packaging)	28.3 g
Weight per piece (including packaging)	30.47 g
Unit of weight	G
Customs number	85364900
Country of origin	AT
Product description	Relay, opened design

Technical data

Dimensions

Length	28 mm
Width	22.5 mm
Height	29 mm

Ratings

Overvoltage category	III
Contamination degree	2

Input data

Working voltage	>18,0 VDC -
Drop-out voltage	2,4 VDC
Coil voltage	24 VDC -
Power consumption	0,74 W
Coil resistance	777 Ohm

Output data

Switching voltage / switching voltage max.	250 / 250 VAC
Continuous current max. / Inrush current max.	6 / 12 A
Contact configuration	4 CO contacts
Switching capacity, max.	1500 VA
Electrical lifespan (AC1)	1,5x10 ⁵ (@ 6 A)
Mechanical lifespan	30x10 ⁶
Contact load, min.	20 mW
Bounce time at close of the NO/NC contact	6/8 ms

Materials

Contact material	AgNi 90/10 + Au
Working temperature, min.	-40 °C
Working temperature, max.	70 °C

Technical data

Further technical data

Degree of protection	RTII (flux proof)
Insulation voltage coil/contact	2,5 kV
Response/release time	10 / 18 ms
Insulation voltage contact/contact	1,2 kV
Mechanical indicator	✓
Test button	✓
Vibration resistance NO/NC	7/4 g
Shock resistance NO/NC	20/5 g
Pinning	2,8 (AMP) mm

Environmental Product Compliance

REACH Conform	yes
REACH Reference date	2024-01-23
REACH Candidate Substance Note	No
RoHS Conform	yes

Data sheet

16126.2 PRS 4/24V DC Au



Approvals

Standards and regulations

CE compliant	yes
--------------	-----

Data sheet

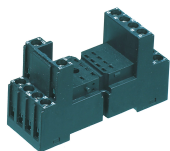
16126.2 PRS 4/24V DC Au



Media

Accessories

##INVERSE##CONTA-ELECTRONICS



Relay socket base PRS, for industrial relay with 4 CO contacts, Screw connection, Plug-in option for input/suppression modules, Mounting type: Mounting rail TS 35

Article number	Article name	GTIN (EAN)	Packaging unit
<u>15137.2</u>	PRS 4	4044211046200	1 ST



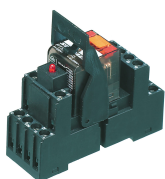
Relay socket base PRS, for industrial relay with 4 CO contacts, Screw connection, Plug-in option for input/suppression modules, Mounting type: Mounting rail TS 35

Article number	Article name	GTIN (EAN)	Packaging unit
<u>15324.2</u>	PRS 4 G	4044211047139	1 ST



Relay socket base PRS, for industrial relay with 4 CO contacts, Tension-spring connection, Plug-in option for input/suppression modules, Mounting type: Mounting rail TS 35

Article number	Article name	GTIN (EAN)	Packaging unit
<u>15431.2</u>	PRS 4 Z	4044211121488	1 ST



Pre-assembled relay module PRS..., Screw connection, Consisting of: relay socket base with multi-layer gold contact, pluggable display/suppression module and holding clip, 4 CO contacts, Input voltage: 24 VDC

Article number	Article name	GTIN (EAN)	Packaging unit
<u>16127.2</u>	PRSU 4/24V DC Au	4044211178215	5 ST



Pre-assembled relay module PRS..., Screw connection, Consisting of: relay socket base with multi-layer gold contact, pluggable display/suppression module and holding clip, 4 CO contacts, Input voltage: 24 VDC

Article number	Article name	GTIN (EAN)	Packaging unit
<u>16399.2</u>	PRSU 4G/24 V DC Au	4044211216504	1 ST

16126.2 PRS 4/24V DC Au

##INVERSE##CONTA-ELECTRONICS



Relay socket base PRS, for industrial relay with 4 CO contacts, Push-in connection, Plug-in option for input/suppression modules and cross connections, Mounting type: Mounting rail TS 35

Article number	Article name	GTIN (EAN)	Packaging unit
<u>16504.2</u>	PPRS 4	4044211236250	10 ST