



Cross-connector, No. of poles: 3, Mounting type: Can be screwed on, Width: 96 mm, Rated cross-section: 120 mm<sup>2</sup>, Colour: natural

### Business data

Article number	<u>17015.0</u>
Article name	QS 3/120/10
GTIN (EAN)	4044211131593
Packaging unit	10
Quantity unit	PC
Weight per piece (not including packaging)	76.4 g
Weight per piece (including packaging)	76.6 g
Unit of weight	G
Customs number	85389099
Country of origin	DE
Product description	Cross-connector
Colour	Natural

### Technical data

#### Dimensions

Length	25 mm
Width	96 mm
Height	4 mm
Hole diameter	10.6 mm
Hole spacing (mid-point to mid-point)	34 mm
Pitch size	34 mm

#### Connection data

No. of poles	3
--------------	---

#### Materials

Material	Copper
Surface	Tin-plated

#### Further technical data

Mounting type	Screwable
Number of bridged terminals	3

#### Environmental Product Compliance

REACH Conform	yes
REACH Reference date	2024-01-23
REACH Candidate Substance Note	No
RoHS Conform	yes

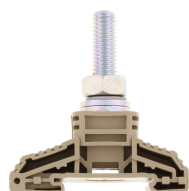
---

### Media

---

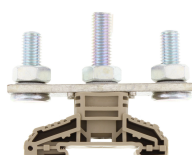
### Accessories

#### ##INVERSE##CONTA-CONNECT



High-power stud terminal, Stud connection, Mounting type: Mounting rail TS 35/7.5,  
Rated cross-section: 120 mm<sup>2</sup>, Width: 32 mm, Colour: Beige

Article number	Article name	GTIN (EAN)	Packaging unit
<u>17003.2</u>	HSK 120/M10 B BG	4044211131487	10 ST



High-power stud terminal, Stud connection, Mounting type: Mounting rail TS 35/7.5,  
Rated cross-section: 120 mm<sup>2</sup>, Width: 32 mm, Colour: Beige

Article number	Article name	GTIN (EAN)	Packaging unit
<u>17007.2</u>	HSK 120/M10 B/B BG	4044211131524	10 ST