

Partition plate, Width: 2 mm, Colour: Beige

### Business data

Article number	<u>17022.2</u>
Article name	TW 35-120/B/B BG
GTIN (EAN)	4044211131678
Packaging unit	20
Quantity unit	PC
Weight per piece (not including packaging)	21.6 g
Weight per piece (including packaging)	21.79 g
Unit of weight	G
Customs number	85389099
Country of origin	DE
Product description	Partition plate
Colour	Beige

---

### Technical data

---

#### Dimensions

Length	156 mm
Width	2 mm
Height	76 mm

#### Materials

Material	Polyamide 6.6
Flammability class UL 94	V-0
Working temperature, min.	-40 °C
Working temperature, max.	120 °C

#### Environmental Product Compliance

REACH Conform	yes
REACH Reference date	2024-01-23
REACH Candidate Substance Note	No
RoHS Conform	yes

---

### Media

---

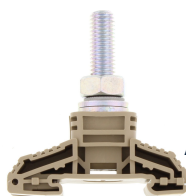
---

### Accessories

---

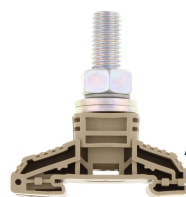
## 17022.2 TW 35-120/B/B BG

### ##INVERSE##CONTA-CONNECT



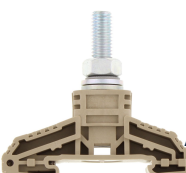
High-power stud terminal, Stud connection, Mounting type: Mounting rail TS 35/7.5, Rated cross-section: 120 mm<sup>2</sup>, Width: 32 mm, Colour: Beige

Article number	Article name	GTIN (EAN)	Packaging unit
<u>17003.2</u>	HSK 120/M10 B BG	4044211131487	10 ST



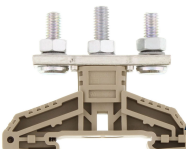
High-power stud terminal, Stud connection, Mounting type: Mounting rail TS 35/7.5, Rated cross-section: 120 mm<sup>2</sup>, Width: 32 mm, Colour: Beige

Article number	Article name	GTIN (EAN)	Packaging unit
<u>17004.2</u>	HSK 120/M12 B BG	4044211131494	10 ST



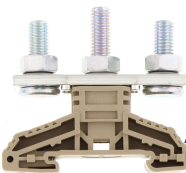
High-power stud terminal, Stud connection, Mounting type: Mounting rail TS 35/7.5, Rated cross-section: 50 mm<sup>2</sup>, Width: 21 mm, Colour: Beige

Article number	Article name	GTIN (EAN)	Packaging unit
<u>17002.2</u>	HSK 50/M8 B BG	4044211131470	10 ST



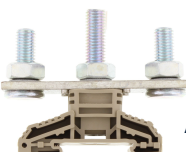
High-power stud terminal, Stud connection, Mounting type: Mounting rail TS 35/7.5, Rated cross-section: 35 mm<sup>2</sup>, Width: 16 mm, Colour: Beige

Article number	Article name	GTIN (EAN)	Packaging unit
<u>17005.2</u>	HSK 35/M6 B/B BG	4044211131500	10 ST



High-power stud terminal, Stud connection, Mounting type: Mounting rail TS 35/7.5, Rated cross-section: 50 mm<sup>2</sup>, Width: 21 mm, Colour: Beige

Article number	Article name	GTIN (EAN)	Packaging unit
<u>17006.2</u>	HSK 50/M8 B/B BG	4044211131517	10 ST

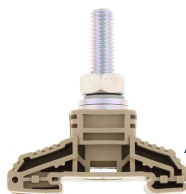


High-power stud terminal, Stud connection, Mounting type: Mounting rail TS 35/7.5, Rated cross-section: 120 mm<sup>2</sup>, Width: 32 mm, Colour: Beige

Article number	Article name	GTIN (EAN)	Packaging unit
<u>17007.2</u>	HSK 120/M10 B/B BG	4044211131524	10 ST

## 17022.2 TW 35-120/B/B BG

### ##INVERSE##CONTA-CONNECT



High-power stud terminal, Stud connection, Mounting type: Mounting rail TS 35/7.5,  
Rated cross-section: 120 mm<sup>2</sup>, Width: 32 mm, Colour: Beige

**Article number**

**Article name**

**GTIN (EAN)**

**Packaging  
unit**

17003.2

HSK 120/M10 B BG

4044211131487

10 ST