

Fused terminal with disconnect plug, Screw connection, Mounting type: Mounting rail TS 35/7.5 and TS 32, Rated cross-section: 10 mm², Width: 8 mm, Colour: Beige

Business data

Article number	<u>17044.2</u>
Article name	SIK 10/ST/5x20 BG
GTIN (EAN)	4044211155827
Packaging unit	25
Quantity unit	PC
Weight per piece (not including packaging)	25.2 g
Weight per piece (including packaging)	27.8 g
Unit of weight	G
Customs number	85369010
Country of origin	CZ
Product description	fused terminal
Colour	Beige

Technical data

Dimensions

Length	60 mm
Width	8 mm
Height TS 35/7.5	73 mm
Height TS 32	69 mm

Ratings

Rated voltage (determined by the illuminated display and fuse being used)	500 V
Rated current (as fuse-disconnect terminal)	10 A
Rated cross-section	10 mm ²
Rated impulse voltage	8 kV
Overvoltage category	III
Contamination degree	3

Connection data

Connection principle	Screw connection
Connection position	Lateral
Connections	2 / disconnect-plug
Number of terminals per level	2
Number of levels	1
Wire cross-section single-core (rigid) / stranded, min.	0.2 mm ²
Wire cross-section single core (rigid)/stranded, max.	10 mm ²
Wire cross-section stranded, min.	0.2 mm ²
Wire cross-section stranded, max.	10 mm ²
Wire cross-section stranded with wire-end ferrules, min.	0.2 mm ²
Wire cross-section stranded with wire-end ferrules, max.	10 mm ²
Wire cross-section AWG, min.	22
Wire cross-section AWG, max.	8
Stripping length	12 mm
Screw head	Slotted
Screw threading	M 4
Tightening torque, min.	1.2 Nm
Tightening torque, max.	2 Nm

Technical data

Materials

Insulation housing	Polyamide 6.6
Flammability class UL 94	V-2
Working temperature, min.	-40 °C
Working temperature, max.	105 °C

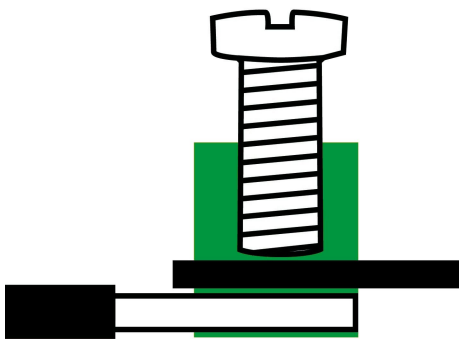
Further technical data

Mounting type	Mounting rail TS 35/7.5 and TS 32
Fuse size	5 x 20 mm
Gauge plug acc. to EN 60 947-1	A5
End plate required	✓
Voltage fuse	250 V
Version of fuse holder	Swivelling
Version of fuse cartridge	G fuse 5 x 20

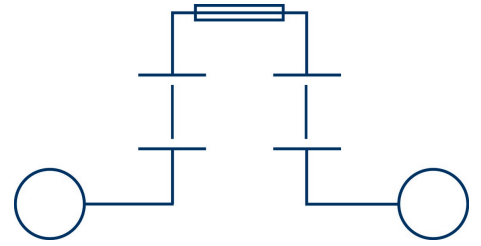
Environmental Product Compliance

REACH Conform	yes
REACH Reference date	2024-01-23
REACH Candidate Substance Note	No
RoHS Conform	yes

Media



M4



Accessories

End plate



End plate, Width: 2 mm, Colour: Beige

Article number	Article name	GTIN (EAN)	Packaging unit
<u>2762.2</u>	AP 10 BG	4044211054922	20

Insulated external cross-connector



External insulated cross-connector, No. of poles: 4, Mounting type: Plug in, Width: 32.3 mm, Rated current: 57 A; Colour: Yellow

Article number	Article name	GTIN (EAN)	Packaging unit
<u>3442.8</u>	AQI 4/8/18 YE	4044211137564	50 ST



External insulated cross-connector, No. of poles: 10, Mounting type: Plug in, Width: 80.9 mm, Rated current: 57 A; Colour: Yellow

Article number	Article name	GTIN (EAN)	Packaging unit
<u>3443.8</u>	AQI 10/8/18 YE	4044211137588	10 ST



External insulated cross-connector, No. of poles: 60, Mounting type: Plug in, Rated current: 57 A; Colour: Yellow

Article number	Article name	GTIN (EAN)	Packaging unit
<u>3444.8</u>	AQI 60/8/18 YE	4044211137571	1 ST

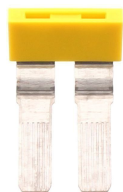


External insulated cross-connector, No. of poles: 3, Mounting type: Plug in, Width: 24.2 mm, Rated current: 57 A; Colour: Yellow

Article number	Article name	GTIN (EAN)	Packaging unit
<u>3441.8</u>	AQI 3/8/18 YE	4044211137557	50 ST

17044.2 SIK 10/ST/5x20 BG

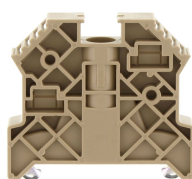
Insulated external cross-connector



External insulated cross-connector, No. of poles: 2, Mounting type: Plug in, Width: 16.1 mm, Rated current: 57 A; Colour: Yellow

Article number	Article name	GTIN (EAN)	Packaging unit
<u>3440.8</u>	AQI 2/8/18 YE	4044211137540	50 ST

End stop



End stop, Mounting type: Mounting rail TS 35/7.5, Width: 9.5 mm, Colour: Beige

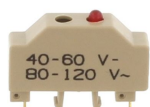
Article number	Article name	GTIN (EAN)	Packaging unit
<u>2828.0</u>	ES 35/K/ST BG	4044211055547	50

LED status display



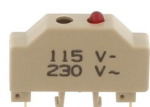
Status display, Display: LED, Mounting type: Plug in, Colour: Beige

Article number	Article name	GTIN (EAN)	Packaging unit
<u>1113.2</u>	SST/SIK/LED(RD)/12V DC/24V AC	4044211017682	10 ST



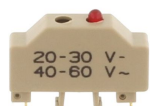
Status display, Display: LED, Mounting type: Plug in, Colour: Beige

Article number	Article name	GTIN (EAN)	Packaging unit
<u>1115.2</u>	SST/SIK/LED(RD)/40-60V DC/80-120V AC	4044211017965	10 ST



Status display, Display: LED, Mounting type: Plug in, Colour: Beige

Article number	Article name	GTIN (EAN)	Packaging unit
<u>1116.2</u>	SST/SIK/LED(RD)/115V DC/230V AC	4044211017972	10 ST



Status display, Display: LED, Mounting type: Plug in, Colour: Beige

Article number	Article name	GTIN (EAN)	Packaging unit
<u>1114.2</u>	SST/SIK/LED(RD)/20-30V DC/40-60V AC	4044211017897	10 ST

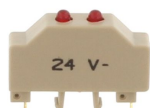
17044.2 SIK 10/ST/5x20 BG

LED status display



Status display, Display: LED, Mounting type: Plug in, Colour: Beige

Article number	Article name	GTIN (EAN)	Packaging unit
<u>17045.2</u>	SST/SIK/LED(RD)/500 V AC/DC	4044211155834	25 ST



Status display, Display: LED, Mounting type: Plug in, Colour: Beige

Article number	Article name	GTIN (EAN)	Packaging unit
<u>1117.2</u>	SST/SIK/2 LED`s(RD)/24V DC	4044211018047	10 ST

Screwdriver

Screwdriver with bare blade, Colour: Black-grey



Article number	Article name	GTIN (EAN)	Packaging unit
<u>1087.0</u>	SDB 0,8x4,0	4044211014803	1 ST