



Feed-through terminal, Screw connection, Mounting type: Mounting rail TS 35/7.5, Rated cross-section: 70 mm<sup>2</sup>, Width: 20.5 mm, Colour: Black-yellow

### Business data

|  |                       |
|--|-----------------------|
| Article number                             | <u>17162.2</u>        |
| Article name                               | SRK 70/2A/PE BKYE     |
| GTIN (EAN)                                 | 4044211186777         |
| Packaging unit                             | 10                    |
| Quantity unit                              | PC                    |
| Weight per piece (not including packaging) | 141 g                 |
| Weight per piece (including packaging)     | 151 g                 |
| Unit of weight                             | G                     |
| Customs number                             | 85369010              |
| Country of origin                          | CZ                    |
| Product description                        | Feed-through terminal |
| Colour                                     | Black-yellow          |

---

### Technical data

---

#### Dimensions

|                  |         |
|------------------|---------|
| Length           | 76.5 mm |
| Width            | 20.5 mm |
| Height TS 35/7.5 | 84 mm   |

#### Ratings

|   |                    |
|---|--------------------|
| Rated voltage                                   | 1000 V             |
| Rated current                                   | 192 A              |
| Current load, max.                              | 232 A              |
| Rated cross-section                             | 70 mm <sup>2</sup> |
| Rated impulse voltage                           | 8 kV               |
| Overvoltage category                            | III                |
| Contamination degree                            | 3                  |
| Maximum power dissipation for nominal condition | 6.14 W             |

### Technical data

#### Connection data

|  |                    |
|--|--------------------|
| Connection principle   | Screw connection   |
| Connection position  | Lateral            |
| Connections  | 2                  |
| Number of terminals per level                                | 2                  |
| Number of levels   | 1                  |
| Wire cross-section single-core (rigid) / stranded, min.      | 10 mm <sup>2</sup> |
| Wire cross-section single core (rigid)/stranded, max.        | 95 mm <sup>2</sup> |
| Wire cross-section stranded, min.                            | 10 mm <sup>2</sup> |
| Wire cross-section stranded, max.                            | 70 mm <sup>2</sup> |
| Wire cross-section stranded with wire-end ferrules,min.      | 10 mm <sup>2</sup> |
| Wire cross-section stranded with wire-end ferrules,max.      | 70 mm <sup>2</sup> |
| Wire cross-section AWG, min.                                 | 6                  |
| Wire cross-section AWG, max.                                 | 000                |
| Stripping length   | 22 mm              |
| Screw head   | Inner hex (Allen)  |
| Screw threading  | M 8                |
| Tightening torque, min.                                      | 6 Nm               |
| Tightening torque, max.                                      | 12 Nm              |
| Wire cross-section single-core (rigid) / stranded, AWGmax.   | 000                |
| Wire cross-section single-core (rigid) / stranded, AWGmin.   | 6                  |
| Wire cross-section stranded, AWG max.                        | 000                |
| Wire cross-section stranded, AWG min.                        | 6                  |
| Wire cross-section stranded with wire-end ferrules, AWG max. | 00                 |
| Wire cross-section stranded with wire-end ferrules, AWG min. | 6                  |

#### Materials

|                           |               |
|---------------------------|---------------|
| Insulation housing        | Polyamide 6.6 |
| Flammability class UL 94  | V-0           |
| Working temperature, min. | -40 °C        |
| Working temperature, max. | 120 °C        |

#### Further technical data

|                                     |                         |
|-------------------------------------|-------------------------|
| Mounting type                       | Mounting rail TS 35/7,5 |
| Gauge plug acc. to EN 60 947-1      | B11                     |
| Number of cross-connection channels | 1                       |
| Number of test pick-off options     | 1                       |

---

### Technical data

---

#### Environmental Product Compliance

---

|                                |            |
|--------------------------------|------------|
| REACH Conform                  | yes        |
| REACH Reference date           | 2024-01-23 |
| REACH Candidate Substance Note | No         |
| RoHS Conform                   | yes        |

---

### Approvals

#### Standards and regulations

|                      |                |
|----------------------|----------------|
| EAC approval         | TR ZU 004/2011 |
| EAC approval granted | yes            |

#### cUL Recognized

|  |              |
|--|--------------|
| cUL approval   | C22.2 No 158 |
| cUL Usegroup B: rated voltage                        | 600 V        |
| cUL Usegroup B: rated current                        | 205 A        |
| cUL Usegroup C: rated voltage                        | 600 V        |
| cUL Usegroup D: rated voltage                        | 600 V        |
| cUL Usegroup D: rated current                        | 205 A        |
| cUL Usegroup E: rated voltage                        | 1000 V       |
| cUL Usegroup E: rated current                        | 205 A        |
| cUL wire cross-section single-core (rigid) AWG, min. | 6            |
| cUL wire cross-section single-core (rigid) AWG, max. | 3/0          |
| cUL wire cross-section stranded AWG, min.            | 6            |
| cUL wire cross-section stranded AWG, max.            | 3/0          |
| cUL torque, min.                                     | 6 Nm         |
| cUL torque, max.                                     | 12 Nm        |
| cUL wire material                                    | Cu           |
| cUL Recognized                                       | 1            |

#### KEMA KEUR approval

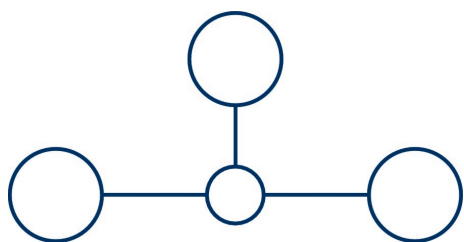
|   |                    |
|---|--------------------|
| KEMA KEUR approval                                | EN 60947-7-1:2009  |
| KEMA KEUR approval granted                        | yes                |
| KEMA rated voltage                                | 1000 V             |
| KEMA rated current                                | 192 A              |
| KEMA rated impulse voltage                        | 8 kV               |
| KEMA wire cross-section single core (rigid), min. | 10 mm <sup>2</sup> |
| KEMA wire cross-section single-core (rigid), max. | 95 mm <sup>2</sup> |
| KEMA wire cross-section stranded, min.            | 10 mm <sup>2</sup> |
| KEMA wire cross-section stranded, max.            | 95 mm <sup>2</sup> |
| KEMA torque, min.                                 | 6 Nm               |
| KEMA torque, max.                                 | 12 Nm              |

### Approvals

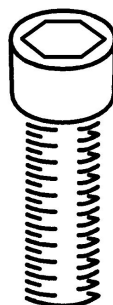
#### UL Recognized

|   |              |
|---|--------------|
| UL approval   | UL 1059      |
| UL Usegroup B: rated voltage                        | 600 V        |
| UL Usegroup B: rated current                        | 205 A        |
| UL Usegroup C: rated voltage                        | 600 V        |
| UL Usegroup C: rated current                        | 205 A        |
| UL Usegroup D: rated voltage                        | 600 V        |
| UL Usegroup D: rated current                        | 205 A        |
| UL Usegroup E: rated voltage                        | 1000 V       |
| UL Usegroup E: rated current                        | 205 A        |
| UL wire cross-section single-core (rigid) AWG, min. | 6            |
| UL wire cross-section single-core (rigid) AWG, max. | 3/0          |
| UL wire cross-section stranded AWG, min.            | 6            |
| UL wire cross-section stranded AWG, max.            | 3/0          |
| UL torque, min.                                     | 53.1 Lb In.  |
| UL torque, max.                                     | 106.2 Lb In. |
| UL wire material                                    | Cu           |
| UL factory wiring                                   | 1            |
| UL field wiring                                     | 1            |
| UL Recognized                                       | 1            |

### Media



**M8**



### Accessories

#### Cover

Cover, Length: 55.5 mm, Width: 20 mm, Colour: Yellow



| Article number | Article name  | GTIN (EAN)    | Packaging unit |
|----------------|---------------|---------------|----------------|
| <u>17285.8</u> | SAD 1/20/B YE | 4044211205546 | 10 ST          |

Cover, Length: 55.5 mm, Width: 20 mm, Colour: White



| Article number | Article name  | GTIN (EAN)    | Packaging unit |
|----------------|---------------|---------------|----------------|
| <u>17286.7</u> | SAD 1/20/B WH | 4044211205553 | 10 ST          |

#### Measurement pick-off terminal

Measurement pick-off terminal, Screw connection, Mounting type: On base, Rated cross-section: 10 mm<sup>2</sup>, Width: 10 mm, Colour: Beige



| Article number | Article name | GTIN (EAN)    | Packaging unit |
|----------------|--------------|---------------|----------------|
| <u>1121.2</u>  | MAG 50 BG    | 4044211080914 | 10 ST          |

#### Inlay profile

Inlay plate, Colour: natural



| Article number | Article name | GTIN (EAN)    | Packaging unit |
|----------------|--------------|---------------|----------------|
| <u>2274.0</u>  | EP 50        | 4044211050818 | 10 ST          |



## 17162.2 SRK 70/2A/PE BKYE

### Allen key socket wrench



Inner hex key with bare blade

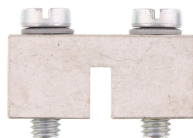
| Article number | Article name | GTIN (EAN)    | Packaging unit |
|----------------|--------------|---------------|----------------|
| <u>2772.0</u>  | ISKS 6       | 4044211055028 | 1 ST           |

### Cross-connector



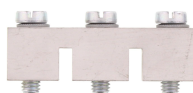
Cross-connector, No. of poles: 4, Mounting type: Can be screwed on, Width: 75.3 mm, Rated cross-section: 70 mm<sup>2</sup>, Colour: natural

| Article number | Article name | GTIN (EAN)    | Packaging unit |
|----------------|--------------|---------------|----------------|
| <u>17267.0</u> | SQ 70/4      | 4044211186869 | 10 ST          |



Cross-connector, No. of poles: 2, Mounting type: Can be screwed on, Width: 34.3 mm, Rated cross-section: 70 mm<sup>2</sup>, Colour: natural

| Article number | Article name | GTIN (EAN)    | Packaging unit |
|----------------|--------------|---------------|----------------|
| <u>17265.0</u> | SQ 70/2      | 4044211186845 | 10 ST          |



Cross-connector, No. of poles: 3, Mounting type: Can be screwed on, Width: 54.8 mm, Rated cross-section: 70 mm<sup>2</sup>, Colour: natural

| Article number | Article name | GTIN (EAN)    | Packaging unit |
|----------------|--------------|---------------|----------------|
| <u>17266.0</u> | SQ 70/3      | 4044211186852 | 10 ST          |

### Quick marking

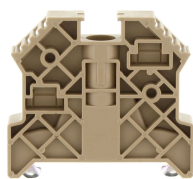


Terminal marker / Pocket Maxicard, Length: 5 mm, Width: 8 mm, Colour: White

| Article number | Article name   | GTIN (EAN)    | Packaging unit |
|----------------|----------------|---------------|----------------|
| <u>9323.7</u>  | PMC SB 8/40 WH | 4044211129231 | 400 ST         |

### End stop

## 17162.2 SRK 70/2A/PE BKYE



End stop, Mounting type: Mounting rail TS 35/7.5, Width: 9.5 mm, Colour: Beige

| Article number | Article name  | GTIN (EAN)    | Packaging unit |
|----------------|---------------|---------------|----------------|
| <u>2828.0</u>  | ES 35/K/ST BG | 4044211055547 | 50             |



End stop, Mounting type: Mounting rail TS 35/7.5 and TS 35/15, Width: 8 mm, Colour: Beige

| Article number | Article name | GTIN (EAN)    | Packaging unit |
|----------------|--------------|---------------|----------------|
| <u>17250.2</u> | SES 35 BG    | 4044211178253 | 50             |