

Feed-through terminal, Screw connection, Mounting type: Mounting rail TS 35/7.5, Rated cross-section: 120 mm<sup>2</sup>, Width: 27 mm, Colour: Black-yellow

### Business data

Article number	<u>17167.2</u>
Article name	SRK 120/2A/PE BKYE
GTIN (EAN)	4044211189396
Packaging unit	5
Quantity unit	PC
Weight per piece (not including packaging)	279.7 g
Weight per piece (including packaging)	298.9 g
Unit of weight	G
Customs number	85369010
Country of origin	CZ
Product description	Feed-through terminal
Colour	Black-yellow

---

### Technical data

---

#### Dimensions

Length	91 mm
Width	27 mm
Height TS 35/7.5	91 mm

#### Ratings

Rated voltage	1000 V
Rated current	269 A
Current load, max.	290 A
Rated cross-section	120 mm <sup>2</sup>
Rated impulse voltage	8 kV
Overvoltage category	III
Contamination degree	3
Maximum power dissipation for nominal condition	8.61 W

### Technical data

#### Connection data

Connection principle	Screw connection
Connection position	Lateral
Connections	2
Number of terminals per level	2
Number of levels	1
Wire cross-section single-core (rigid) / stranded, min.	16 mm <sup>2</sup>
Wire cross-section single core (rigid)/stranded, max.	150 mm <sup>2</sup>
Wire cross-section stranded, min.	16 mm <sup>2</sup>
Wire cross-section stranded, max.	120 mm <sup>2</sup>
Wire cross-section stranded with wire-end ferrules,min.	16 mm <sup>2</sup>
Wire cross-section stranded with wire-end ferrules,max.	95 mm <sup>2</sup>
Wire cross-section AWG, min.	4
Wire cross-section AWG, max.	0000
Stripping length	27 mm
Screw head	Inner hex (Allen)
Screw threading	M 10
Tightening torque, min.	12 Nm
Tightening torque, max.	20 Nm
Wire cross-section single-core (rigid) / stranded, AWGmax.	0000
Wire cross-section single-core (rigid) / stranded, AWGmin.	4
Wire cross-section stranded, AWG max.	0000
Wire cross-section stranded, AWG min.	4
Wire cross-section stranded with wire-end ferrules, AWG max.	0000
Wire cross-section stranded with wire-end ferrules, AWG min.	4

#### Materials

Insulation housing	Polyamide 6.6
Flammability class UL 94	V-0
Working temperature, min.	-40 °C
Working temperature, max.	120 °C

#### Further technical data

Mounting type	Mounting rail TS 35/7,5
Gauge plug acc. to EN 60 947-1	B13
Number of cross-connection channels	1
Number of test pick-off options	1

---

### Technical data

---

#### Environmental Product Compliance

---

REACH Conform	yes
REACH Reference date	2024-01-23
REACH Candidate Substance Note	No
RoHS Conform	yes

---

### Approvals

#### Standards and regulations

EAC approval	TR ZU 004/2011
EAC approval granted	yes

#### cUL Recognized

cUL approval	C22.2 No 158
cUL Usegroup B: rated voltage	600 V
cUL Usegroup B: rated current	228 A
cUL Usegroup C: rated voltage	600 V
cUL Usegroup D: rated voltage	600 V
cUL Usegroup D: rated current	228 A
cUL Usegroup E: rated voltage	1000 V
cUL Usegroup E: rated current	228 A
cUL wire cross-section single-core (rigid) AWG, min.	4
cUL wire cross-section single-core (rigid) AWG, max.	4/0
cUL wire cross-section stranded AWG, min.	4
cUL wire cross-section stranded AWG, max.	4/0
cUL torque, min.	12 Nm
cUL torque, max.	20 Nm
cUL wire material	Cu
cUL Recognized	1

#### KEMA KEUR approval

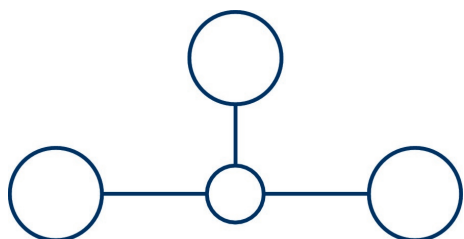
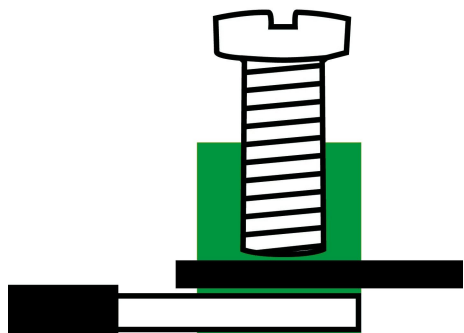
KEMA KEUR approval	EN 60947-7-1:2009
KEMA KEUR approval granted	yes
KEMA rated voltage	1000 V
KEMA rated current	269 A
KEMA rated impulse voltage	8 kV
KEMA wire cross-section single core (rigid), min.	16 mm <sup>2</sup>
KEMA wire cross-section single-core (rigid), max.	150 mm <sup>2</sup>
KEMA wire cross-section stranded, min.	16 mm <sup>2</sup>
KEMA wire cross-section stranded, max.	150 mm <sup>2</sup>
KEMA torque, min.	12 Nm
KEMA torque, max.	20 Nm

### Approvals

#### UL Recognized

UL approval	UL 1059
UL Usegroup B: rated voltage	600 V
UL Usegroup B: rated current	228 A
UL Usegroup C: rated voltage	600 V
UL Usegroup C: rated current	228 A
UL Usegroup D: rated voltage	600 V
UL Usegroup D: rated current	228 A
UL Usegroup E: rated voltage	1000 V
UL Usegroup E: rated current	228 A
UL wire cross-section single-core (rigid) AWG, min.	4
UL wire cross-section single-core (rigid) AWG, max.	4/0
UL wire cross-section stranded AWG, min.	4
UL wire cross-section stranded AWG, max.	4/0
UL torque, min.	106.2 Lb In.
UL torque, max.	177 Lb In.
UL wire material	Cu
UL factory wiring	1
UL field wiring	1
UL Recognized	1

### Media



### Accessories

#### Cover

Cover, Length: 70.2 mm, Width: 26.5 mm, Colour: White



Article number	Article name	GTIN (EAN)	Packaging unit
<u>17290.7</u>	SAD 1/27/B WH	4044211205560	5 ST

Cover, Length: 70.2 mm, Width: 26.5 mm, Colour: Yellow



Article number	Article name	GTIN (EAN)	Packaging unit
<u>17291.8</u>	SAD 1/27/B YE	4044211205577	5 ST

#### Measurement pick-off terminal

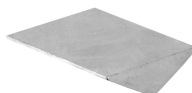
Measurement pick-off terminal, Screw connection, Mounting type: On base, Rated cross-section: 10 mm<sup>2</sup>, Width: 10 mm, Colour: Beige



Article number	Article name	GTIN (EAN)	Packaging unit
<u>1125.2</u>	MAG 150/240 BG	4044211080921	10 ST

#### Inlay profile

Inlay plate, Colour: natural



Article number	Article name	GTIN (EAN)	Packaging unit
<u>2275.0</u>	EP 95	4044211050825	10 ST



## 17167.2 SRK 120/2A/PE BKYE

### Allen key socket wrench



Inner hex key with bare blade

Article number	Article name	GTIN (EAN)	Packaging unit
<u>2772.0</u>	ISKS 6	4044211055028	1 ST

### Cross-connector



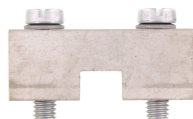
Cross-connector, No. of poles: 4, Mounting type: Can be screwed on, Width: 98 mm, Rated cross-section: 120 mm<sup>2</sup>, Colour: natural

Article number	Article name	GTIN (EAN)	Packaging unit
<u>17280.0</u>	SQ 120/4	4044211189488	10 ST



Cross-connector, No. of poles: 3, Mounting type: Can be screwed on, Width: 71 mm, Rated cross-section: 120 mm<sup>2</sup>, Colour: natural

Article number	Article name	GTIN (EAN)	Packaging unit
<u>17279.0</u>	SQ 120/3	4044211189358	10 ST



Cross-connector, No. of poles: 2, Mounting type: Can be screwed on, Width: 44 mm, Rated cross-section: 120 mm<sup>2</sup>, Colour: natural

Article number	Article name	GTIN (EAN)	Packaging unit
<u>17278.0</u>	SQ 120/2	4044211189471	10 ST

### Quick marking

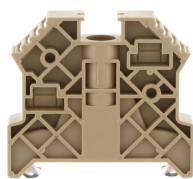


Terminal marker / Pocket Maxicard, Length: 5 mm, Width: 8 mm, Colour: White

Article number	Article name	GTIN (EAN)	Packaging unit
<u>9323.7</u>	PMC SB 8/40 WH	4044211129231	400 ST

### End stop

## 17167.2 SRK 120/2A/PE BKYE



End stop, Mounting type: Mounting rail TS 35/7.5, Width: 9.5 mm, Colour: Beige

Article number	Article name	GTIN (EAN)	Packaging unit
<u>2828.0</u>	ES 35/K/ST BG	4044211055547	50



End stop, Mounting type: Mounting rail TS 35/7.5 and TS 35/15, Width: 8 mm, Colour: Beige

Article number	Article name	GTIN (EAN)	Packaging unit
<u>17250.2</u>	SES 35 BG	4044211178253	50